

FEB 13 1999

SECTION

LAND CORNER RECORDATION CERTIFICATE  
Filing Requirement of Act 74, Mich. P.A. 1970

For corners in

Osceola (County)	Located In:	Corner Code #
1. Public Land Survey	T <u>18N</u> R <u>9W</u>	<u>MC-2</u>
2. Property Controlling in Section	S <u>    </u> T <u>    </u> R <u>    </u>	<u>    </u>
3. Miscellaneous Property in Sec.	S <u>    </u> T <u>    </u> R <u>    </u>	<u>    </u>

APPROVED LAND CORNER  
P.A. 345 OF 1890  
Osceola County  
*Matthew McClung*  
8 Oct 1998

Register of Deeds Stamp & File Number

4. Lot No. \_\_\_\_\_, Recorded Plat \_\_\_\_\_

5. Private Claims \_\_\_\_\_

I, Craig W. McVean, in a field survey on Oct 19 19 98 do hereby state that under requirements of P.A. 74, Michigan P.A. of 1970, the corner points mentioned in lines 1 and 2 above were in conformance with regulations and rules therefore as required in the current manual of survey instructions of the United States Department of the Interior, Bureau of Land Management or by a decree of a Court of Law and /or that the corner points mentioned in lines 3, 4 and 5 above were in conformance with the rules of the Michigan Board of Land Surveyors or by a Decree of a Court of Law; established, re-established, monumented, recovered, found as expressed below:

NOTE: Not more than 2 corners, all in the same town and range, may be recorded on this certificate.

A. Description of original monument and accessories and/or subsequent restoration:

MC-2  $\left[ \begin{array}{l} S11 \\ S14 \end{array} \right]$  MC - GLO - J. Hodgson - 1838  
West 43.94 CH.  
Over lake a Pine 18" for Meander Post  
West side of lake.

B. Description of corner evidence found and/or method applied in restoring or reestablishing corner:

MC-2  $\left[ \begin{array}{l} S11 \\ S14 \end{array} \right]$  MC - Meander Corner on W. Side of Horsehead Lake between Sec. 11 & 14, T18N, R9W. Searched for evidence of Pine stp. along high water line of lake, but a 2 track had been bulldozed along the high waterline. No conclusive GLO evidence FND. Set 2" Alum. Cap on 5/8" x 34" rebar by single proportion on line between 15 and found Meander Corner on E. side of Horsehead Lake. This position is on the NE'y edge of bulldozer 2-track. Edge of water on 10/19/98 is 37' E. and also 20' N. 2" A.C. accepted as a careful and faithful re-establishment of the position at the original corner.

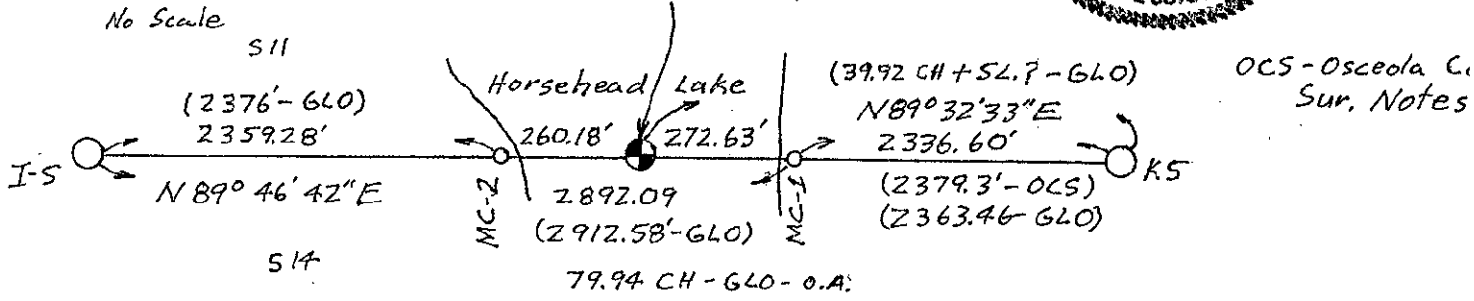
C. Description of monument for corner and accessories established to perpetuate locating the position of the corner:

MC-2  $\left[ \begin{array}{l} S-11 \\ S-14 \end{array} \right]$  MC - 2" Alum. Cap on 5/8" x 34" Rebar. Built small ring of stone.  
Set Orange Carsonite Post 1' W.  
S57°W 37.30' to Set N&T in NW Side 12" W. Oak.  
N74°W 59.94' to Set N&T in S. Side Tw. 18" R. Oak.  
N58°W 97.00' to Set N&T in SW Side 8" W. Pine.  
S14°W 25.54' to Set N&T in W. Side 6" R. Oak



N  
4  
No Scale

Calc. 1/4 Cor. in lake based on split overall GLO Dist. Prorated between I-5 & MC-1 per Remon. Peer Group Discussion



Signed by Craig W. McVean  
Surveyor's Michigan License No. 39088

Date 12/9/1998