

FEB 18 1999

SECTION LAND CORNER RECORDATION CERTIFICATE  
Filing Requirement of Act 74, Mich. P.A. 1970

For corners in

Osceola (County) Located in: Corner Code #

1. Public Land Survey T 18N R 9W MC-3  
T R

2. Property Controlling in Section S T R  
S T R

3. Miscellaneous Property in Sec. S T R  
S T R

4. Lot No. , Recorded Plat

5. Private Claims

OSCEOLA COUNTY  
State of Michigan  
Received For Record  
Dec 17, 1998 @ 2:02 P.M.  
NANCY CRAWFORD  
Registrar of Deeds

APPROVED LAND CORNER  
P.A. 355 OF 1990  
Osceola County  
*Matthew McCleary*  
8 Oct 1998

Register of Deeds Stamp & File Number

I, Craig W. McVean, in a field survey on Feb. 23 19 98 do hereby state that under requirements of P.A. 74, Michigan P.A. of 1970, the corner points mentioned in lines 1 and 2 above were in conformance with regulations and rules therefore as required in the current manual of survey instructions of the United States Department of the Interior, Bureau of Land Management or by a decree of a Court of Law and /or that the corner points mentioned in lines 3, 4 and 5 above were in conformance with the rules of the Michigan Board of Land Surveyors or by a Decree of a Court of Law; established, re-established, monumented, recovered, found as expressed below:

NOTE: Not more than 2 corners, all in the same town and range, may be recorded on this certificate.

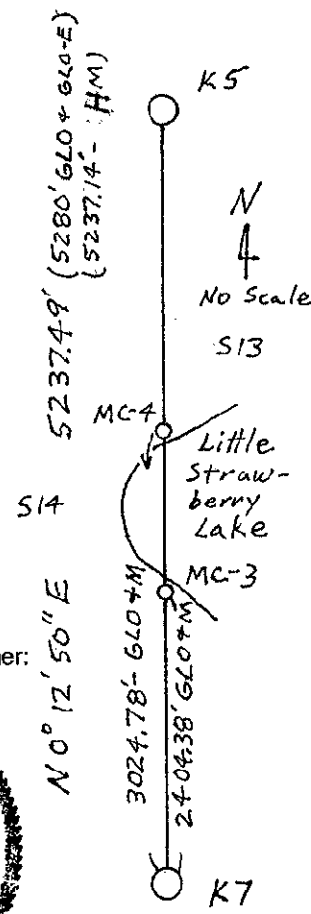
	A	B	C	D	E	F	G	H	I	J	K	L	M
1		6	5		4		3		2		1		
2													
3													
4		7	8		9		10		11		12		
5													
6		18	17		16		15		14		13		
7													
8		19	20		21		22		23		24		
9													
10		30	29		28		27		26		25		
11													
12		31	32		33		34		35		36		
13													

A. Description of original monument and accessories and/or subsequent restoration:

- MC-3 [ MC S14 S13 ] - GLO - J. Hodgeson - 1838 North 36.43 CH.  
- A Hemlock 8" Dia. for Meander Post on S. Side Lake  
- GLO - Examination - A.P. Brewer - 1854 - S 1/4°E 43.28 CH - over lake  
- Rec. Sur. - L429, P.551 - H. Mulder - set Iron Meander Cor. - 1984

B. Description of corner evidence found and/or method applied in restoring or reestablishing corner:

- MC-3 [ MC S14 S13 ] Meander Corner on S. side of Little Strawberry Lake between Sec. 13 & 14, T18N, R9W. Could find no conclusive GLO evidence. FND. PS #25862 cap on 1/2" Iron Rod 2407.13' North of K7 but 4.45' E. of line between K7 and K5. Couldn't accept this capped iron rod as the GLO Meander Corner. A single proportional position would be 2385.02' N. of K7 but 35' ± S. of the edge of the lake and the N. shore meander corner would be in the lake. Thus set 2" Alum. Cap on 5/8" x 34" rebar at record GLO distance of 2404.38' north of K7 on line between K7 and K5. Edge of water is 15' ± N on 2/23/98. Down N-S wire fence remains are 4' ± E. 2" Alum. Cap is accepted as a careful and faithful re-establishment of the position of the original corner.



C. Description of monument for corner and accessories established to perpetuate locating the position of the corner:

- MC-3 [ MC S14 S13 ] 2" Aluminum Cap on 5/8" x 34" rebar  
Set Blue Carsonite post 1' E.  
N58° 27' E 5.25' to Capped 1/2" Rod #25862  
S50°W 2.97' to Set N&T in NW Side Tw. 12" R. Maple  
S82°E 27.23' to Set N&T in S Side 7" W. Pine  
S35°E 26.49' to Set N&T in SW Side 9" R. Maple



Signed by Craig W. McVean Date 12/7/1998  
Surveyor's Michigan License No. 39088