

FEB 18 1999

SECTION

LAND CORNER RECORDATION CERTIFICATE  
Filing Requirement of Act 74, Mich. P.A. 1970

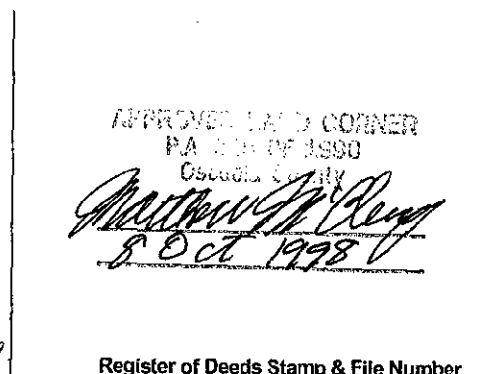
For corners in

Osceola Located In: \_\_\_\_\_ Corner Code # \_\_\_\_\_  
(County)

1. Public Land Survey T 18N R 9W MC-4  
T \_\_\_\_\_ R \_\_\_\_\_

2. Property Controlling S \_\_\_\_\_ T \_\_\_\_\_ R \_\_\_\_\_  
in Section S \_\_\_\_\_ T \_\_\_\_\_ R \_\_\_\_\_

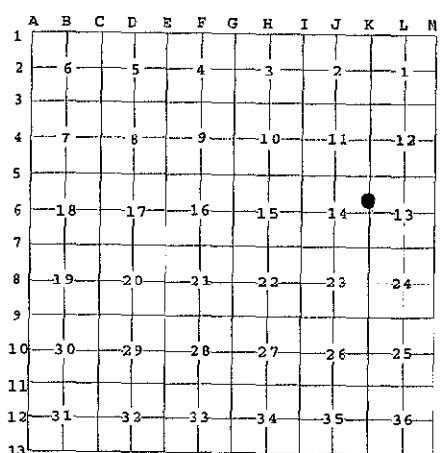
3. Miscellaneous S \_\_\_\_\_ T \_\_\_\_\_ R \_\_\_\_\_  
Property in Sec. S \_\_\_\_\_ T \_\_\_\_\_ R \_\_\_\_\_



4. Lot No. \_\_\_\_\_, Recorded Plat \_\_\_\_\_ NANCY CRAWFORD  
Register of Deeds

5. Private Claims \_\_\_\_\_

I, Craig W. McVean, in a field survey on Feb. 23 19 98 do hereby state that under requirements of P.A. 74, Michigan P.A. of 1970, the corner points mentioned in lines 1 and 2 above were in conformance with regulations and rules therefore as required in the current manual of survey instructions of the United States Department of the Interior, Bureau of Land Management or by a decree of a Court of Law and/or that the corner points mentioned in lines 3, 4 and 5 above were in conformance with the rules of the Michigan Board of Land Surveyors or by a Decree of a Court of Law; established, re-established, monumented, recovered, found as expressed below:



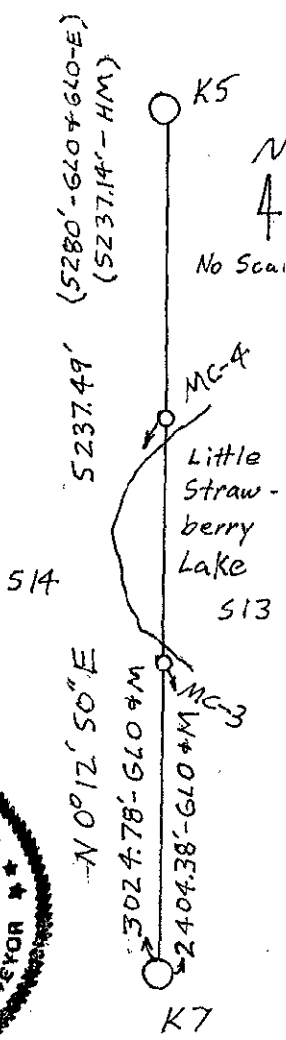
NOTE: Not more than 2 corners, all in the same town and range, may be recorded on this certificate.

A. Description of original monument and accessories and/or subsequent restoration:

MC-4 [S14 | S13] GLO - J. Hodgeson - 1838  
MC North 45.83 CH - North side of Lake  
Set Meander Post, Pine 10" N85°W 26 L., Beech 7" N38°E 30L.  
- GLO Examination - A.P. Brewer - 1854 - S1/4°E 34.00 CH - Intersect Lake 48L. E. of line Dead Y. Pine 10" W. 16L. marked 1/4S BT at bottom  
- Rec. Sur. - L. 429 P. 556 - H. Mulder - Set iron - 1985

B. Description of corner evidence found and/or method applied in restoring or reestablishing corner:

MC-4 [S14 | S13] Meander corner on north side of Little Strawberry Lake between Sec. 13 & 14, T18N, R9W  
MC -No conclusive GLO evidence found. FND. PS cap #25862 on 1/2" Iron Rod 3025.24' N. of K7 but 4.17'E. of line between K7 and K5. Couldn't accept this capped iron rod as the GLO meander corner. A single proportional position would be 3000.43' N. of K7. This SP position is 20'± into the lake and the south Meander Corner SP position would be 35'± S. of the S. shore of the lake. Thus set 2" aluminum cap on 5/8" x 34" rebar at record GLO distance of 3024.78' N. of K7 on line between K7 and K5. Edge of water on 2/23/98 is 4'± S. Remains of N-S down wire fire fence is 4'± W. 2" Alum.Cap. accepted as a careful and faithful re-establishment of the position of the original corner.



C. Description of monument for corner and accessories established to perpetuate locating the position of the corner:

MC-4 [S14 | S13] 2" Alum. Cap on 5/8" x 34" Rebar.  
MC Set Blue Carsonite Post 1' E.  
N83° 50'E 4.20' to capped 1/2" rebar #25862.  
S70°W 54.43' to Set N&T in S. Side 10" W. Pine.  
N20°E 30.45' to Set N&T in SE Side 14" R. Maple.  
N44°E 119.92' to Set N&T in SE Side 10" W. Pine.



Signed by Craig W. McVean  
Surveyor's Michigan License No. 39088

Date 12/9/1998