

LAND CORNER RECORDATION CERTIFICATE
Filing Requirement of Act 74, Mich. P.A. 1970

For corners in
OSCEOLA

(County)

Located in:

Corner Code ~~##~~

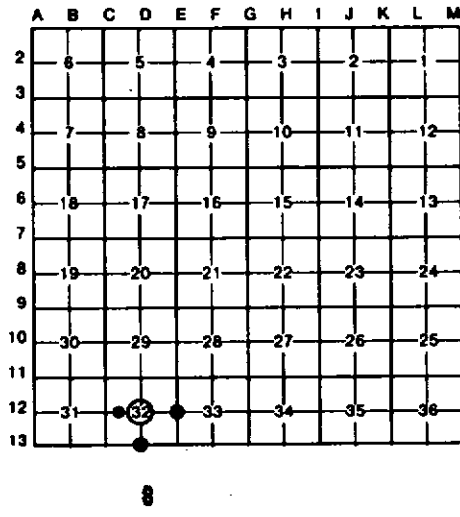
- | | | |
|---------------------------------------|-----------------------------|-------------|
| 1. Public Land Survey | T <u>19N</u> R <u>8W</u> | <u>B-12</u> |
| | T _____ R _____ | <u>B-13</u> |
| | T _____ R _____ | <u>E-12</u> |
| | T _____ R _____ | |
| 2. Property Controlling in Section | S <u>32</u> T _____ R _____ | <u>8</u> |
| | S _____ T _____ R _____ | |
| 3. Miscellaneous Property in Sec. | S _____ T _____ R _____ | |
| | S _____ T _____ R _____ | |
| 4. Lot No. _____, Recorded Plat _____ | | |
| 5. Private Claims _____ | | |

Register of Deeds Stamp & File Number

I, CARL F. ROSER, in a field survey on FEBRUARY 9, 19 89, do hereby certify that under requirements of P.A. 74, Michigan P.A. of 1970, the corner points mentioned in lines 1 and 2 above were in conformance with regulations and rules therefore as required in the current manual of survey instructions of the United States Department of the Interior, Bureau of Land Management or by a decree of a Court of Law and/or that the corner points mentioned in lines 3, 4 and 5 above were in conformance with the rules of the Michigan Board of Land Surveyors or by a Decree of a Court of Law; established, re-established, monumented, re-monumented, recovered, found as expressed below:

NOTE: Not more than 4 corners, all in the same town and range, may be recorded on this certificate.

A. Description of original monument and accessories and/or subsequent restoration:



B. Description of corner evidence found and/or method applied in restoring or reestablishing corner:

- | | | | |
|---|--|--|--|
| B-12
ACCEPTED 1 1/2"x1 1/2" ANGLE IRON FOR CTR SEC. 32. THIS COR POSSIBLY SET BY FRANK MCCLUNG (1957±). | B-13
ACCEPTED 1/2" IRON ROD IN 3" VIT TILE FOR S1/4 SEC. 32. COR PROBABLY WAS REMONUMENTED BY CO SURVEYOR (1900±). | E-12
FD 3" VIT TILE; ADDED 5/8"x34" REROD W/RLB CAP & SET CED POST N/LOC TAG. 23° N PINE STP N13°W 24.9' 8" N OAK N 7°W 19.9' 12" R OAK N60°E 13.0' FD CONC MON 885°E 19.05' | 8
ESTAB SE COR, S1/4-N1/4; PER STD BLM INSTRUCTIONS. |
|---|--|--|--|

C. Description of monument for corner and accessories established to perpetuate locating the position of the corner:

- | | | | |
|--|---|---|--|
| B-12
FD 1 1/2"x1 1/2" ANGLE IRON; ADDED CED POST W/LOC TAG. 9" R. OAK N15°E 15.0' 10" MAPLE S40°E 18.5' CTR 1 1/2"x7" ROCK N80°W 29' FD 1 1/4" PIPE N73°W 90.97' | B-13
FD OLD 1/2" IRON ROD IN TILE; ADDED CED POST W/LOC TAG. PT ON TOP 1 1/2"x2 1/2" ROCK S60°E 56' 5" MAPLE S65°E 23.5' 6" MAPLE S20°W 7.7' 15" R. OAK DUE N 18.7' | E-12
FD 3" TILE; ADDED 5/8"x34" RE-ROD W/RLB CAP & CED POST W/LOC TAG. 4" HEMLOCK N50°E 25.8' 5" MAPLE S70°E 30.4' 6" HEMLOCK S50°W 12.4' | 8
DROVE 5/8"x34" RE-ROD W/RLB CAP & SET CED POST W/LOC TAG. 23° N PINE STP N13°W 24.9' 8" N OAK N 7°W 19.9' 12" R OAK N60°E 13.0' FD CONC MON 885°E 19.05' |
|--|---|---|--|

Signed by Carl F. Roser 02-05-91 Date _____
 Surveyor's Michigan License No. 12028

