

APPROVED BY PEER GROUP
P.A. 345 OF 1990
SAGINAW COUNTY

SAGINAW COUNTY REMONUMENTATION
LAND CORNER RECORDATION CERTIFICATE
Filing Requirement of Act 74, Mich. P.A. 1970

10-23-96

For corners in

Saginaw
(County)

THOMAS TWP.
Located in:
Thomas Twp. Corner Code #

1. Public Land Survey

T12N R 3E
T12N R 3E
E-7
E-8

2. Property Controlling
in Section

S T R
S T R
S T R
S T R

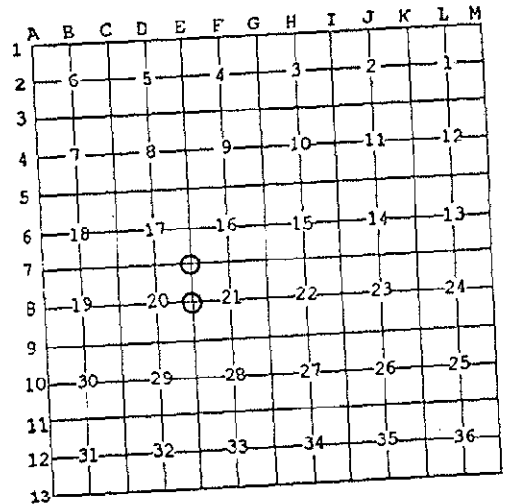
3. Miscellaneous
Property in Sec.

4. Lot No. _____, Recorded Plat _____
5. Private Claims _____

I, Duane F. Ledy, in a field survey on October 25, 1996, do hereby state that under requirements of P.A. 74, Michigan P.A. of 1970, the corner points mentioned in lines 1 and 2 above were in conformance with regulations and rules therefore as required in the current manual of survey instructions of the United States Department of the Interior, Bureau of Land Management or by a decree of a Court of Law and/or that the corner points mentioned in lines 3, 4 and 5 above were in conformance with the rules of the Michigan Board of Land Surveyors or by a Decree of a Court of Law; established, re-established, monumented, recovered, found as expressed below:

NOTE: Not more than 2 corners, all in the same town and range, may be recorded on this certificate.

RECORDED & FILED
OCT 31 2 23 PM 1996
MILDRED M. DODAK
REGISTER OF DEEDS
SAGINAW COUNTY MICH.
Register of Deeds Stamp & File Number



A. Description of original monument and accessories and/or subsequent restoration:

E-7
Set post at 80.00 chains North of E-9; 1822, Joseph Wampler
16" Beech-S32°E, 10 links
44" Pine-N41 1/2°W, 15 links
L.C.R.C. -Martin (L1, P257) 1972 3/4 Iron Bar

E-8
Set post at 40.00 chains North of E-9; 1822, Joseph Wampler
16" Elm-S10°E, 18 1/2 links, 10" Elm-N10°W, 25 links
-Surveys by Soltis (L1378, P411 & L1385, P555) refers to
L.C.R.C. by Soltis (L2, P45) 1972 which calls for Found 1" Pipe.
-Survey by Leach (L1400, P276) refers to L.C.R.C. (L1, P257) in
error, no E-8 on that document.
-L.C.R.C. Martin (L4, P54) 1972 calls for 3/4" Pipe with different
witnesses than Soltis. However, he does note L.C.R.C. by Soltis.
Whether this is the same point is not determinable.

B. Description of corner evidence found and/or method applied in restoring or reestablishing corner:

E-7
Found 3/4" Pipe in Mon. box per L.C.R.C. witness:
E 44.61' (44.54' M) Fce P. P.
SW 177.69' (177.58' M) NE Cor Brick Hse.

E-8
Found 1" pipe in Mon box.
L.C.R.C. (L4, P54) witness:
NE 62.62' (62.60' M) Nail & Cap in NW Fce P. P.
SW 98.55' (98.42' M) to NE Cor. Brick House

Monument accepted as best evidence of original position.

Monument accepted as best evidence of original position.

C. Description of monument for corner and accessories established to perpetuate locating the position of the corner:

E-7
Set 5/8" rod with remon. cap over 1" square bolt fnd below 3/4"
pipe, in monument box.
East, 45.47' to nail & tag in S side P.P.
West, 26.10' to centerline North end 12" C.M.P.
SW, 177.58' to NE corner house #1975
NE, 250.67' to SW corner house #2040

E-8
Set 5/8" rod with remon. cap in monument box.
NW, 62.20' to nail & tag in W side P.P.
NE, 62.59' to nail & tag in w side P.P.
SE, 58.31' to nail & tag in NE side P.P.
SW, 98.42' to NE corner brick house

Signed by Duane F. Ledy
Surveyor's Michigan License No. 21575

Date 10/31/96



REMONUMENT

MAY 1 6 1997