

SURVEY & REMONUMENTATION

MAY 15 1997

1996 REMONUMENTATION PROGRAM

COMMISSION

LAND CORNER RECORDATION CERTIFICATE
Filing Requirement of Act 74, Mich. P.A. 1970

For corners in Juniata Township

RECEIVED FOR RECORD
LIBER NO. _____ PAGE NO. _____
FILE NO. #01 Juniata
95 OCT 31 AM 10:40
JAMES A. BECK
TUSCOLA COUNTY
REGISTER OF DEEDS

<u>TUSCOLA</u> (County)	Located In:	Corner Code #
1. Public Land Survey	<u>T 12N R 8E</u>	<u>A-1</u>
	<u>T 12N R 7E</u>	<u>M-1</u>
	<u>T 13N R 8E</u>	<u>A-13</u>
	<u>T 13N R 7E</u>	<u>M-13</u>
2. Property Controlling in Section	S ___ T ___ R ___	___
	S ___ T ___ R ___	___
3. Miscellaneous Property in Sec.	S ___ T ___ R ___	___
	S ___ T ___ R ___	___

Register of Deeds Stamp & File Number

4. Lot No. _____, Recorded Plat _____
5. Private Claims _____

1	A	B	C	D	E	F	G	H	I	J	K	L	M
2	6		5		4		3		2		1		
3													
4	7		8		9		10		11		12		
5													
6	18		17		16		15		14		13		
7													
8	19		20		21		22		23		24		
9													
10	30		29		28		27		26		25		
11													
12	31		32		33		34		35		36		
13													

I, Kenneth D. Dunton, in a field survey on Oct. 21, 1995 do hereby state that under requirements of P.A. 74, Michigan P.A. of 1970, the corner points mentioned in lines 1 and 2 above were in conformance with regulations and rules therefore as required in the current manual of survey instructions of the United States Department of the Interior, Bureau of Land Management or by a decree of a Court of Law and/or that the corner points mentioned in lines 3, 4 and 5 above were in conformance with the rules of the Michigan Board of Land Surveyors or by a Decree of a Court of Law, established, re-established, monumented, recovered, found as expressed below:

NOTE: Not more than 2 corners, all in the same town and range, may be recorded on this certificate.

A. Description of original monument and accessories and/or subsequent restoration:

Corner M-1, T12N-R7E Dec. 8, 1975 L.C.R.C. form filed by James A. Beck, 1834 G.L.O. Notes LS21559. Fnd. 1/2" rod. N40°W 47.80' RLS 11192 tag in TP. N45°E 49.19' road sign post; S45°W 45.00' Intersected town line "T" iron; West 0.5' centerline road. Filed page 23, 38.87 West of 1/4 Section corner. Fairgrove Twp.
W. Oak 14 N43W 33
Beech 12 S54E 52
Elm 10 N23E 4

Section A continued on back of this form.

B. Description of corner evidence found and/or method applied in restoring or reestablishing corner:

Found 5/8" rod in place, also found 1 1/4" x 36" pipe below 5/8" rod and remains of wood post and rocks. Accepted 5/8" rod as the proper position of Corner A-1.

C. Description of monument for corner and accessories established to perpetuate locating the position of the corner:

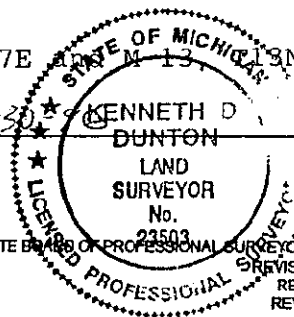
Removed 5/8" rod, 1 1/4" pipe and wood post. Placed concrete monument with standard brass cap stamped Corner M-1, T12N-R7E. Placed monument box over monument. Set Nov. 18, 1995. S51°40'W 25.60' chiseled "+" atop West end 50' of 30" C.S.P. N30°19'W 65.21' fnd. "+" chiseled atop large rock (24" x 30"+). N48°29'E 147.45' SW cor. brick face house #493. N49°E 67.0' center 12" pine. S58°24'E 34.78' chiseled notch atop East end 50' of 30" C.S.P.

Note: This corner is common with corners M-1, T12N-R7E and A-13, T13N-R8E

Signed by [Signature]
Surveyor's Michigan License No. 23503

Date 10-30-96

APPROVED
[Signature]
10-30-96



FORM APPROVED BY MICHIGAN STATE BOARD OF PROFESSIONAL SURVEYORS, JAN. 28, 1971
REVISED MAY 14, 1975
REVISED JAN., 1983
REVISED OCT., 1995

COPY

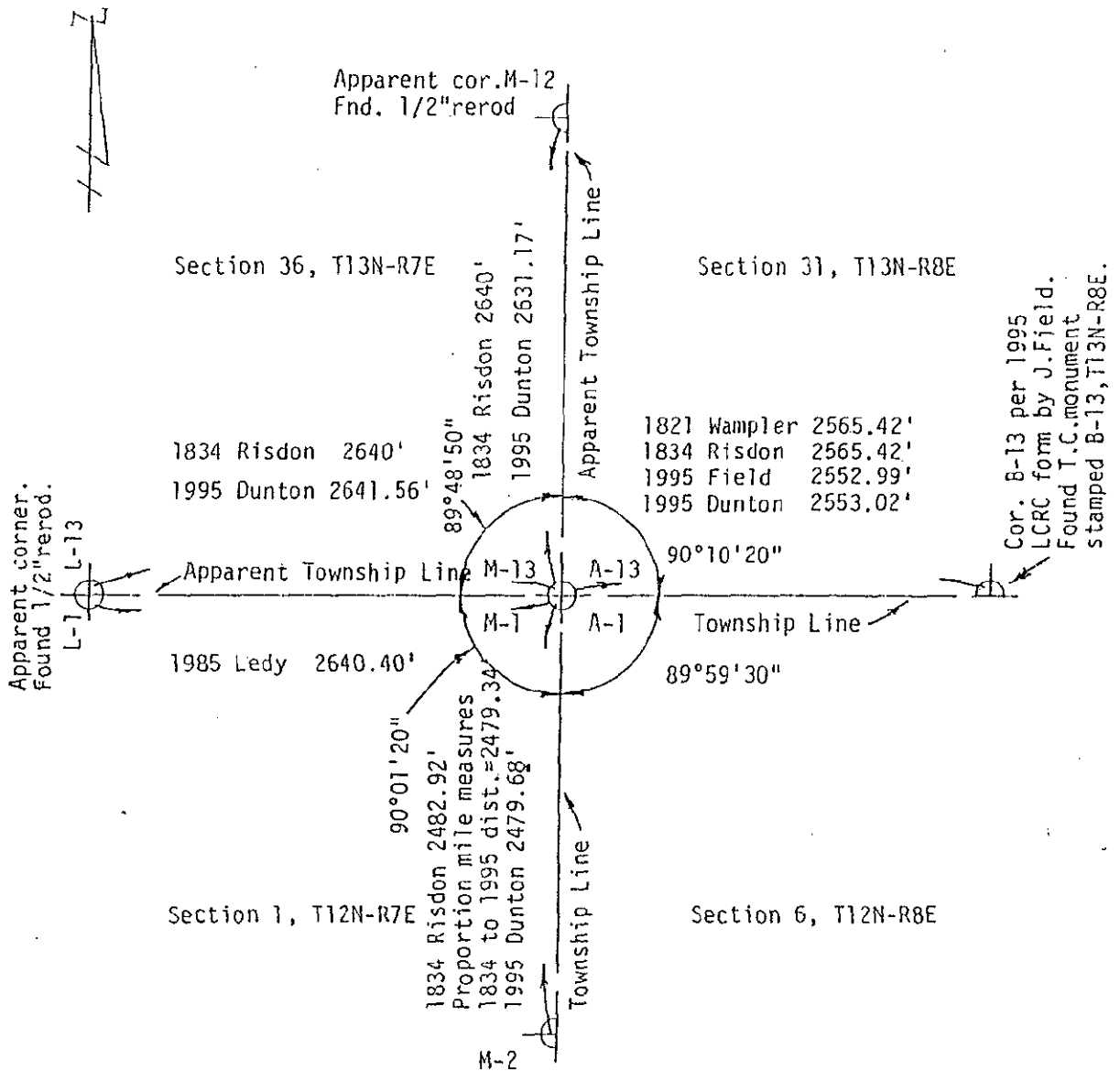
Section A continued:

Feb. 23, 1983 L.C.R.C. form filed by Richard R. Boldt, LS 28405 on Page 45 Juniata Township. Fnd. 5/8" re-rod. N25°W 65.35' chis. "X" on top large rock, S45°W 25.70' chis. "X" on W. end 26" C.M.P., N50°E 40.09' chis. "X" on road sign post, N45°E 147.42' SW cor. brick face house. Note: This corner is common to Sec. 1 Denmark NE cor.; SE cor. Sec. 36 Gilford Township and Sec. 31, Fairgrove Twp. SW cor.

Feb. 24, 1983 Survey by R. Boldt, LS 28405, recorded in Liber 540, Page 08, Tuscola County records. No mention of object found or set. Accessories same as L.C.R.C. page 45 except corner house not used and no mention of common cor. to adjacent townships.

August 27, 1985 Survey by Duane F. Ledy, RLS 21575, recorded in Liber 552 on Page 1404, Tuscola County records. 1/2" rebar. SE 25.70' to top 30" ctr. C.M.P., NE 40.05' to road sign post, SW 26.00' to top 30" C.M.P.

Dec. 2, 1988 Survey by Stephen J. Szyszkoski, LS 33986 with Rowe Eng., recorded in Liber 588, Page 871, Tuscola County records. Fnd. 5/8" re-rod. Fnd. chis. "X" W. end 26" C.M.P. S45°W 25.70', N25°W 65.21' fnd. chis. "X" on top large rock, N45°E 147.42' SW cor. brick face to house #493, S45°E 22.63' set 1/2" rod w/cap 33986 at edge asphalt.



COPY