

LAND CORNER RECORDATION CERTIFICATE

Filing Requirement of Act 74, Mich. PA 1970

For Corners In:

Alpena
(County)

Located In

Corner Code #

1. Public Land Survey	T	29N	R	8E	G-2
	T	29N	R	8E	G-3
2. Property Controlling in Section	S	T	R		
	S	T	R		
3. Miscellaneous Property in Section	S	T	R		
	S	T	R		

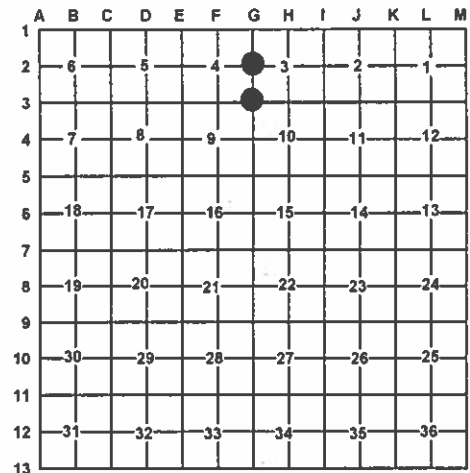
4. Lot No: _____ Recorded Plat: _____

5. Private Claims: _____

I, Carl T. Kiiskila, in a field survey on July 12, 2010 do hereby state that under requirements of PA 74, Michigan PA of 1970, the corner points mentioned in lines 1 and 2 above were in conformance with regulations and rules therefore as required in the current manual of survey instructions of the United States Department of the Interior, Bureau of Land Management or by a decree of a Court of Law and/or that the corner points mentioned in lines 3, 4 and 5 above were in conformance with the rules of the Michigan Board of Land Surveyors or by a Decree of a Court of Law; established, re-established, monumented, recovered, found as expressed below:

NOTE: Not more than 2 corners, all in the same town and range, may be recorded on this certificate.

Register of Deeds Stamp & File Number



A. Description of original monument and accessories and/or subsequent restoration:

G-2 – West ¼ Corner Section 3, T29N,R8E

1839 – GLO – Lewis Claison – Set qr. sec. post.
W. Birch 12" S76½°W 32 Links
Hem 15" N69°E 26 Links

1903 – County survey records Jos. W. McNeil survey for Highway Commissioner J.L. Mathews found remains of both O.B.T.s set new cedar stake.
No witnesses given

G-3 – Sec. Cor. comm. to sec.'s 3,4,9&10, T29N,R8E

1839 – GLO – Lewis Claison – Set post corner secs. 3,4,9 & 10
Tam 12" N24½°W 10 Links
Fir 6" S46½°E 12 Links

1903 – County survey records Jos. W. McNeil survey for Highway Commissioner J.L. Mathews found Cor. Plain set new cedar stake in old East and West road our O.B.T standing Tamarack stub 9" N24½°W 10 Links

1973 – L.C.R.C. L. 1,P. 21 D. Marlatt P.S.#18660 fd fence post
Agreed with Jos. W. McNeil distance West set concrete monument.
N20°E 54.12' 6" Poplar
N20°W 36.25' 8" Poplar
S 20°E 43.84' 6" Poplar

B. Description of corner evidence found and/or method applies in restoring or re-establishing corner:

G-2 – West ¼ Corner Section 3, T29N,R8E

Dug in old road bed for remains of cedar stake unable to Find. Reestablished the corner in the centerline of old road bed prorated North and South to Jos. W. McNeil survey distance.

G-3 – Sec. Cor. comm. to sec.'s 3,4,9&10, T29N,R8E

Found a concrete monument with the top broken off fitting Jos. W. McNeil survey and road bed to North.
Replaced broken monument with new concrete monument and P.S. cap#33981

C. Description of monument for corner and accessories established to perpetuate locating the position of the corner:

G-2 – West ¼ Corner Section 3, T29N,R8E

Set a 1"x36" galvanized pipe with Standard DNR Cap

Witnesses:

N88°E 10.51' to set N&T on N side 3" Balsam Fir
S38°E 25.53' to set N&T on SW side 6" Balsam Fir
S42°W 28.7' to set N&T on SE side 6" Balsam Fir
N60°W 19.33' to set N&T on SW side 6" Balsam Fir

Set Blue Carsonite Post 10' West

G-3 – Sec. Cor. comm. to sec.'s 3,4,9&10, T29N,R8E

Concrete monument with P.S. cap#33981

Witnesses:

N52°E 63.20' to set N&T on SE side 9" Balsam Fir
S35°E 76.80' to set N&T on NE side 8" Balsam Fir
S34°W 39.63' to set N&T on SE side Power Pole
N47°W 14.19' to set N&T on N side 9" Cedar
N04°W 17.42' to set N&T on E side 11" & 12" Twin Cedar

Set Blue Carsonite Post 1' North

Signed by:

Carl T. Kiiskila

Date:

2/9/11

Surveyor's Michigan License No.:

33981

