

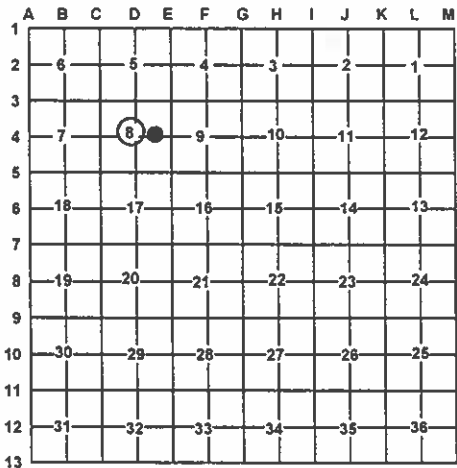
LAND CORNER RECORDATION CERTIFICATE
Filing Requirement of Act 74, Mich. PA 1970

For Corners In:
Antrim Located In Corner Code #
(County)
1. Public Land Survey T 30N R 6W D4
2. Property Controlling in Section S 8 T 30N R 6W 9
3. Miscellaneous Property in Section S T R

4. Lot No: Recorded Plat:
5. Private Claims:

I, Carl T. Kiiskila, in a field survey on July 6 2010 do hereby state that under requirements of PA 74, Michigan PA of 1970, the corner points mentioned in lines 1 and 2 above were in conformance with regulations and rules therefore as required in the current manual of survey instructions of the United States Department of the Interior, Bureau of Land Management or by a decree of a Court of Law and/or that the corner points mentioned in lines 3, 4 and 5 above were in conformance with the rules of the Michigan Board of Land Surveyors or by a Decree of a Court of Law; established, re-established, monumented, recovered, found as expressed below:

NOTE: Not more than 2 corners, all in the same town and range, may be recorded on this certificate.



A. Description of original monument and accessories and/or subsequent restoration:

D4 - C 1/4 Corner, Section 8, T30N, R06W 9 - CE 1/16 Corner, Section 8, T30N,R06W
1976 - L.C.R.C. (from DNRE Land Corner File) - Carl F. Roser, P.S.#12028 - Found and accepted 1" pipe as recovered and accepted by RLS Findorff in 1967. Corner believed to be a result of old Botsford survey. Corner is in E-W gravel road and 3/4" pipe 33' North. Power Pole N58°E 36.36'; 6" Cedar N23°W 44.00'; 6" Cedar S10°W 40.83'; Set cedar guard post 33' North.
1977 - MDNR Survey Map - Plan No. R-5-I-I - Carl F. Roser, P.S.#12028 - Found and accepted old 1" pipe, probably by Botsford and used by RLS Findorff, in 1967. Shows bearings and distances East and West. No witnesses.

B. Description of corner evidence found and/or method applies in restoring or re-establishing corner:

D4 - C 1/4 Corner, Section 8, T30N, R06W 9 - CE 1/16 Corner, Section 8, T30N,R06W
Found 1" pipe 4' South of E-W centerline gravel road per L.C.R.C. by Carl F. Roser, P.S.#12028. Accepted found 1" pipe as the best available evidence for the position of the corner. Added 5/8" P.S. cap #33981 in center of pipe.
Found 1" pipe 5.5' South of E-W centerline gravel road per MDNR survey map by Carl F. Roser, P.S.#12028. Accepted found 1" pipe as the best available evidence for the position of the corner. Lowered pipe 6" below grade and added 5/8" P.S. cap #33981 in center of pipe.

C. Description of monument for corner and accessories established to perpetuate locating the position of the corner:

D4 - C 1/4 Corner, Section 8, T30N, R06W 9 - CE 1/16 Corner, Section 8, T30N,R06W
1" Pipe w/ 5/8" P.S. cap #33981 in center of pipe 1" Pipe w/ 5/8" P.S. cap #33981 in center of pipe
Wit: *N54°E 36.30' to fd. N&T on NW side Power Pole S72°E 63.80' to set N&T on N side 14" Cedar S04°W 30.17' to set N&T on E side 12" Cedar *N27°W 43.90' to set N&T on E side 12" Cedar North 33.08' to fd. 5/8" rebar Set 4" dia. Cedar Guard post on E. side of fd. rebar
Wit: N21°E 24.53' to set N&T on NW side 6"&9" Twin Elm S42°E 30.20' to set N&T on W side 8" Sugar Maple S28°W 26.08' to set N&T on SE side 7" Sugar Maple N63°W 54.34' to set N&T on NE side 6" Sugar Maple North 32.71' to fd. 1" pipe Set Blue Carsonite post /loc. Tag on E. side of found pipe North 32.71' of 1/16 corner.

* Previous recorded witness.

Carl T. Kiiskila
Surveyor's Michigan License No.: 33981

