

LAND CORNER RECORDATION CERTIFICATE

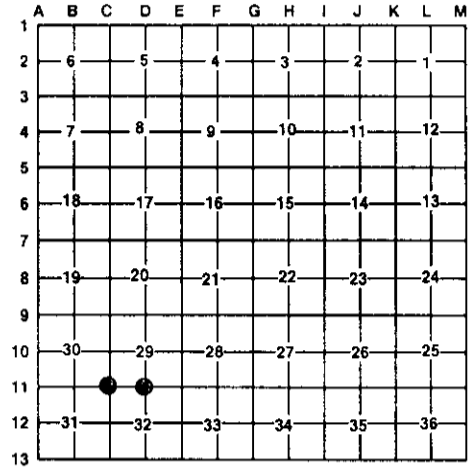
Filing Requirement of Act 74, Mich. PA 1970

For Corners In: Antrim _____ (County)	Located In	Corner Code #
1. Public Land Survey	T <u>31N</u> R <u>6W</u>	<u>D-11</u>
	T <u>31N</u> R <u>6W</u>	<u>C-11</u>
2. Property Controlling in Section	S _____ T _____ R _____	_____
	S _____ T _____ R _____	_____
3. Miscellaneous Property in Section	S _____ T _____ R _____	_____
	S _____ T _____ R _____	_____
4. Lot No: _____	Recorded Plat: _____	
5. Private Claims: _____		

Register of Deeds Stamp & File Number

I, Carl T. Kiiskila, in a field survey on August 7, 2002 do hereby state that under requirements of PA 74, Michigan PA of 1970, the corner points mentioned in lines 1 and 2 above were in conformance with regulations and rules therefore as required in the current manual of survey instructions of the United States Department of the Interior, Bureau of Land Management or by a decree of a Court of Law and/or that the corner points mentioned in lines 3, 4 and 5 above were in conformance with the rules of the Michigan Board of Land Surveyors or by a Decree of a Court of Law; established, re-established, monumented, recovered, found as expressed below:

NOTE: Not more than 2 corners, all in the same town and range, may be recorded on this certificate.



A. Description of original monument and accessories and/or subsequent restoration:

D-11 G.L.O. E.D. Atwater 1856 set quarter section post.
 Wit: Hemlock 14 N41°W 39 links
 Beech 14 S19°E 45 links

C-11 G.L.O. E.D. Atwater 1856 set corner of
 Sections 29,30,31 and 32.
 Wit: W. Pine 11 N80°E 14 links
 Tamarack 6 S83°W 6 links

Liber 1, Page 211 (Carl F. Roser R.L.S. #12028 September 15, 1976) added DNR monument to a found 1 1/4" pipe.
 Wit: 10" Twin Maple N64°E 51.8'
 10" Maple S62°E 63.4'
 9" B. Cherry S32°W 53.3'
 15" B. Cherry N78°W 74.1'

Liber 1, Page 211 (Carl F. Roser R.L.S. #12028 September 15, 1976) Set DNR monument from original B.T. stumps.
 Wit: 8" W. Pine S72°W 32.1'
 9" W. Pine N28°W 34.1'
 7" Cedar N66°E 23.8'
 10" W. Pine S03°W 47.0'

B. Description of corner evidence found and/or method applies in restoring or re-establishing corner:

D-11 Found DNR monument fitting C.F. Roser's witnesses.

C-11 Found DNR monument fitting C.F. Roser's witnesses.

C. Description of monument for corner and accessories established to perpetuate locating the position of the corner:

D-11 Found DNR monument
 Wit: 18" Maple S57°E 63.51'
 18" Twin Maple N72°E 52.45'
 12" Cherry S38°W 53.58'
 10" Cherry S80°W 36.33'

C-11 Found DNR monument
 Wit: 10" Aspen S86°E 15.32'
 6" Cedar S48°E 13.17'
 9" W. Pine S74°W 32.40'
 14" W. Pine N65°W 22.03'
 5" Maple N13°E 19.18'

Signed by: _____

Carl T. Kiiskila

Date: _____

8-29-02

Surveyor's Michigan License No.: _____

33981

