

MICHIGAN
DEPARTMENT OF CONSERVATION
FORESTRY DIVISION

LAND CORNER RECORD

T. T47-48 N.R. 34W

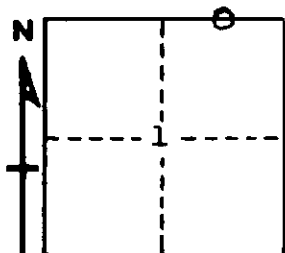
Baraga COUNTY

DESCRIPTION OF CORNER East 1/16 cor. between Sec. 1 & 36

CORNER MONUMENT 1" I.D. x 36" iron pipe with 4" aluminum cap

DATE MONUMENT PLACED AND WITNESSED August 27, 1968

WITNESSES TO CORNER..... Cedar 12 S37W 68 lks. "1/16S BT"



Cedar 9 N12W 45 lks. "1/16S BT"

AND

CIRCLE CORNER REGISTERED

DESCRIPTION IN DETAIL AS TO HOW CORNER WAS LOCATED AND IDENTIFIED OR RESTORED.

This corner established midway on line between Sec. Cor. 20.095 chains East and $\frac{1}{4}$ cor. 20.095 chains West (computed from measurements by survey crew under direction of B. D. Buckler, R.L.S., made on February 7, 1966).

No evidence that a corner had been previously established here.

Names of persons present when corner was placed: A. O. Enger.

SURVEYOR'S SEAL

SIGNED Arthur O. Enger DATE 11/26/68
REGISTERED LAND SURVEYOR