

SURVEY & REMONUMENTATION

APR 08 1996

COMMISSION

For corners in

Barry

(County)

Located In:

Corner Code #

1. Public Land Survey

T R
T R
T R
T R

2. Property Controlling in Section

S 6 T 2N R 10W
S 31 T 3N R 10W

ORANGEVILLE

Yankee Springs Twp.

3. Miscellaneous

S T R
S T R

Property in Sec.

4. Lot No. , Recorded Plat

5. Private Claims

STATE OF MICHIGAN
COUNTY OF BARRY
RECEIVED FOR RECORD

Nov 20 9 08 AM '95

Sandy Schondelmar
REGISTER OF DEEDS

002327

Register of Deeds Stamp & File Number

T2N R10W

	A	B	C	D	E	F	G	H	I	J	K	L	M
2	6		5		4		3		2		1		
3													
4	7		8		9		10		11		12		
5													
6	18		17		16		15		14		13		
7													
8	19		20		21		22		23		24		
9													
10	30		29		28		27		26		25		
11													
12	31		32		33		34		35		36		
13													

T3N R10W

I, John C. Bueche, in a field survey on September, 19 95, do hereby certify that under requirements of P.A. 74, Michigan P.A. of 1970, the corner points mentioned in lines 1 and 2 above were in conformance with regulations and rules therefore as required in the current manual of survey instructions of the United States Department of the Interior, Bureau of Land Management or by a decree of a Court of Law and/or that the corner points mentioned in lines 3, 4 and 5 above were in conformance with the rules of the Michigan Board of Land Surveyors or by a Decree of a Court of Law; established, re-established, monumented, re-monumented, recovered, found as expressed below:

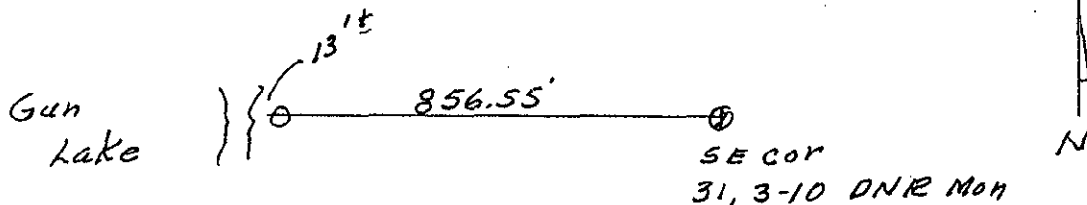
NOTE: Not more than 4 corners, all in the same town and range, may be recorded on this certificate.

A. Description of original monument and accessories and/or subsequent restoration:

3/4" pipe as per survey Jan., 1993 by Reynolds, not recorded
SW cor. fnd. N 44.94'
NW cor. fnd. E 40.08'
Deciduous tree SW 4.31
Fir tree W 10.44
Meander post noted by GLO Deputy Surveyor, John Mullett, January 16, 1826
12.93 chains W of C-13 (853.38')
As "Y Oak 12 on margin of the Lake"

B. Description of corner evidence found and/or method applied in restoring or reestablishing corner:

Found 3/4" pipe as per survey 856.55' West of SE cor. 31, 3-10
SW cor. fnd. N 44.94'
NW cor. fnd. E 40.08'

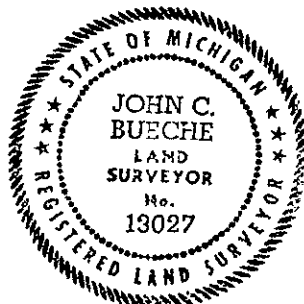


C. Description of monument for corner and accessories established to perpetuate locating the position of the corner:

Placed Barry Co. Cap on top 3/4" pipe
NW cor. hse. fnd. #4048 S 75 E 40.08'
SW cor. hse. fnd. #3982 N 0 E 44.94'
SW cor. hse. frame #4048 S 45 E 49.69'
Fence E-W, South 0.8'±
E. edge Lake West 13'±

ACT 345 BARRY COUNTY REMONUMENTATION
APPROVED BY PEER REVIEW AT A MEETING HELD ON

AUGUST 14, 1995 BR
BRIAN REYNOLDS COUNTY SURVEYOR



Signed by John C. Bueche
Surveyor's Michigan License No. 13027

Date Oct 2, 1995