

MICHIGAN
DEPARTMENT OF CONSERVATION
FORESTRY DIVISION

LAND CORNER RECORD

T. 44 N. R. 1 W

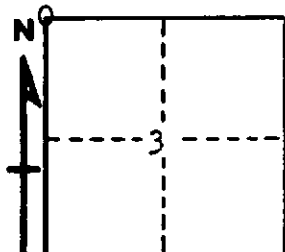
Chippewa COUNTY

DESCRIPTION OF CORNER Section Corner common to Sections 3-4-33-34

CORNER MONUMENT 1" Pipe with 4" Brass Cap (buried)

DATE MONUMENT PLACED AND WITNESSED 5-16-62 with W. Lehman, District Forester

WITNESSES TO CORNER..... NBT's: 16" Red Oak (NBT) N 77° W 78 links



18" Red Oak (NBT) S 20° E 177 links

20" Red Oak (NBT) S 31° W 152 links

AND

CIRCLE CORNER REGISTERED

DESCRIPTION IN DETAIL AS TO HOW CORNER WAS LOCATED AND IDENTIFIED OR RESTORED.

This corner was replaced at Corner set previously by two Surveyors. Found a round, tapered concrete monument and a 1" Iron Pin in place. Monument probably set by Cowell.

Corner lies in Intersection fo roads N. & E.

SURVEYOR'S SEAL

SIGNED Billy D. Buckler DATE 8-22-63
REGISTERED LAND SURVEYOR
Billy D. Buckler