

MICHIGAN
DEPARTMENT OF CONSERVATION
FORESTRY DIVISION

LAND CORNER RECORD

T. 44 N. R. 1 W

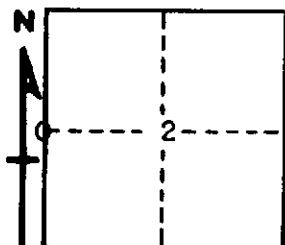
Chippewa COUNTY

DESCRIPTION OF CORNER 1/4 Corner between Sections 2-3

CORNER MONUMENT 1" Pipe with 4" Aluminum Cap

DATE MONUMENT PLACED AND WITNESSED 5-22-62

WITNESSES TO CORNER..... NBT's: 8" Soft Maple (1/4 S NBT) N 43° W 111 links



CIRCLE CORNER REGISTERED

10" Soft Maple (1/4 S NBT) S 64° W 106 links

AND

DESCRIPTION IN DETAIL AS TO HOW CORNER WAS LOCATED AND IDENTIFIED OR RESTORED.

This corner was placed by single proportionate measure and on line between two Section Corners.

Corner lies on East edge of N-S Road and 48 links South of Road to East.

SURVEYOR'S SEAL

SIGNED Billy D. Buckler DATE 8-23-63
REGISTERED LAND SURVEYOR
Billy D. Buckler