

LAND CORNER RECORDATION CERTIFICATE
Filing Requirement of Act 74, Mich. P.A. 1970
Chippewa County Remonumentation Corner \$7.00 LAND CORNER

For corners in

Chippewa County

Located in:

Corner Code #

1. Public Land Survey

T44N R1W K-5

2. Property Controlling
in Section

S
S
S
S

T
T
T
T

SURVEY &
REMONUMENTATION

3. Miscellaneous
Property in Sec.

R
R
R
R

FEB 23 2001

4. Lot No.

, Recorded Plat

5. Private Claims

SECTION

\$2.00 MSSR

2 FEB 2001 3:52:00 PM Receipt #1103

RECEIVED FOR RECORD

CHIPPewa COUNTY - STATE OF MICHIGAN
SHARON H. KENNEDY, REGISTER OF DEEDS

BOOK 11 PAGE 212

Register of Deeds Stamp & File Number

I, Keith R. Waters, in a field survey on October 30, 2000, do hereby state that under requirements of P.A. 74, Michigan P.A. of 1970, the corner points mentioned in lines 1 and 2 above were in conformance with regulations and rules therefore as required in the current manual of survey instructions of the United States Department of the Interior, Bureau of Land Management or by a decree of a Court of Law and /or that the corner points mentioned in lines 3, 4 and 5 above were in conformance with the rules of the Michigan Board of Land Surveyors or by a Decree of a Court of Law; established, re-established, monumented, recovered, found as expressed below:

NOTE: Not more than 2 corners, all in the same town and range, may be recorded on this certificate.

A. Description of original monument and accessories and/or subsequent restoration:

K-5 Corner Common to Sections 11, 12, 13 & 14, T44N, R1W.

1845 - Original corner established by James H. Mullett.

Witnesses: Birch 24, N71°W 23 links - Hemlock 12, S55°E 43 links.

1914 - Chippewa County Surveyor Frederick H. Brown, RLS 944. Brown's notes indicate a "Stillwell" corner.

1918 - Brown notes that testimony says that Stillwell set this corner and the one a mile to the west.

1925 - Chippewa County Surveyor corner tie book. Brown & Colwell reference a 15" concrete monument.

1974 - Unrecorded survey in Section 12 by Rudolph H. Larsen, RLS 3644. Corner is shown with a distance of 2610 feet to the South ¼ corner of Section 12. No description of the corner is given, no witnesses.

1980 - Unrecorded survey in Section 14 by Harry Goodwin, RLS 5434. Corner as shown as a bent 1" diameter monument, with a distance of 2615.40 feet to the North ¼ corner of Section 14.

1980 - Certificate of Survey by Granger Engineering, Liber 406, page 581. Corner is not shown on the drawing, but was located as part of a section subdivision.

1980 - William L. Karr, P.S. 27450, LCRC Liber 5, page 4, Chippewa County corner records. Found ¾" iron bar, location matches section drawing in Chippewa County Surveyor's office. Witnesses:
8" Spruce, N56°E 59.04' - 8" Poplar, S28°E 77.98' - 14" Poplar, S64°W 78.17' - P. Pole, N51°W 47.30'.

1999 - Ronald Bischer, P.S. 22428, Certificate of Survey, Liber 799, p. 30. Corner is shown as a ¾" bar. Survey in Section 13 shows the distance from the Northwest corner to the North ¼ corner as 2610.28'.

B. Description of corner evidence found and/or method applied in restoring or reestablishing corner:

This corner is being perpetuated as part of the Chippewa County Remonumentation Program.

The ¾" iron bar as described in the above mentioned 1980 LCRC is now buried under a substantial amount of fill and new bituminous pavement on 20 Mile Road. There seems to be an approximate 8 foot difference in the east-west location of the ¾" bar and the monument shown by Mr. Goodwin (see sketch of the back of this form). Both of these corners were located at approximately the same period of time in 1980. The position of the Goodwin corner would seem to work better with County Surveyor records to the ¼ corner between Sections 12 & 13. However, other than the distance shown on the Goodwin survey, I can find no evidence of another monument at this location. The above mentioned Larsen survey, which predates the Goodwin survey by 6 years, supports the ¾" bar. Reset the corner in the position of the ¾" bar using previous traverse work.

C. Description of monument for corner and accessories established to perpetuate locating the position of the corner:

Placed a ¾" x 24" rebar with a stamped aluminum Chippewa County Remonumentation cap in a monument box at the corner location, which falls 3.5± north of the centerline of 20 Mile Road, at a gravel road (Roe Road) to the south.

Witnesses:

Nail and plastic witness tag #33142 in 9" Spruce, S60°W 87.72'

Nail and plastic witness tag #33142 in Power Pole, N47°W 47.17'

Nail and plastic witness tag #33142 in 22" Spruce, N06°E 61.44'

Nail and plastic witness tag #33142 in 12" Balsam Fir, N60°E 76.70'

Signed by

Keith R. Waters

Date

12-29-00

Surveyor's Michigan License No. 33142

FORM APPROVED BY MICHIGAN STATE BOARD OF PROFESSIONAL SURVEYORS, JAN. 28, 1971
REVISED MAY 14, 1975
REVISED JAN., 1983
REVISED OCT., 1995

T44N R1W K-5

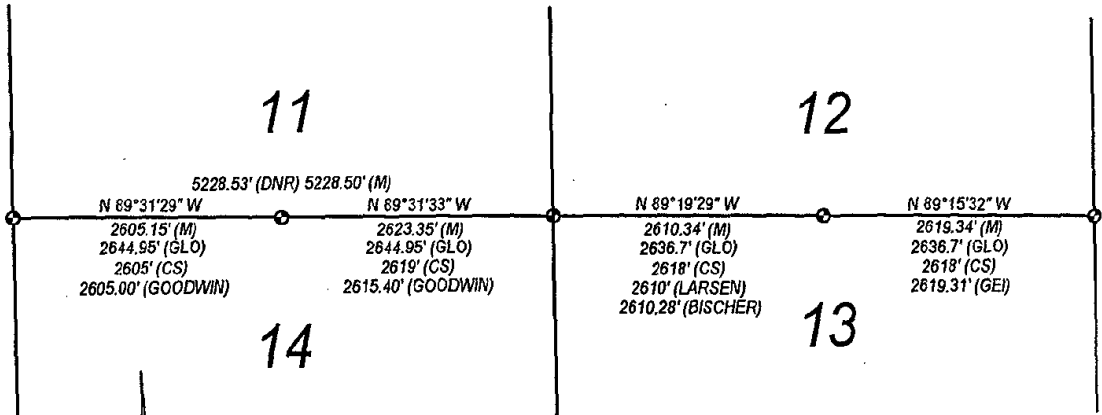
BOOK 11 PAGE 212

SURVEY &
REMONUMENTATION

FEB 23 2001

SECTION

BOOK 11 PAGE 213



LEGEND

(M) - MEASURED DISTANCE IN 2000
(GLO) - GENERAL LAND OFFICE DISTANCE (1845)
(DNR) - DEPARTMENT OF NATURAL RESOURCES DISTANCE (1987)
(CS) - COUNTY SURVEYOR DISTANCE (1914 OR 1918)
(GOODWIN) - HARRY GOODWIN DISTANCE (1980)
(LARSEN) - RUDOLPH LARSEN DISTANCE (1974)
(BISCHER) - RONALD BISCHER DISTANCE (1999)
(GEI) - GRANGER ENGINEERING INC. DISTANCE (1980)