

MICHIGAN
DEPARTMENT OF CONSERVATION
FORESTRY DIVISION

LAND CORNER RECORD

T. 45N N.R. 7W

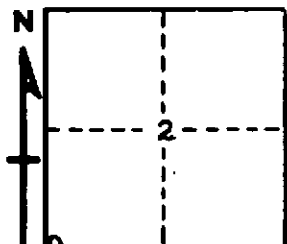
Chippewa COUNTY

DESCRIPTION OF CORNER Sec. Cor. common to Secs. 2-3-10-11

CORNER MONUMENT 1 1/2" x 30" iron pipe buried in E-W road

DATE MONUMENT PLACED AND WITNESSED 5-23-69

WITNESSES TO CORNER..... 10" cedar (S10 NBT) S18°W 37.0'



9" cedar (S11 NBT) S28°E 40.5'

AND

CIRCLE CORNER REGISTERED

DESCRIPTION IN DETAIL AS TO HOW CORNER WAS LOCATED AND IDENTIFIED OR RESTORED.

This corner replaced in E-W road and north of an old wood post on side of road.
Location checks with other corners to west.
Found no original evidence.

SURVEYOR'S SEAL

SIGNED *Billy D. Buckler*
Billy D. Buckler DATE 8-28-69
REGISTERED LAND SURVEYOR