

MICHIGAN
DEPARTMENT OF CONSERVATION
FORESTRY DIVISION

LAND CORNER RECORD

T. 26 N.R. 1 W

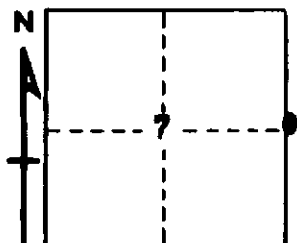
Crawford COUNTY

DESCRIPTION OF CORNER 1/4 corner common to Sections 7-8

CORNER MONUMENT Set Cons. Dept. Mon.

DATE MONUMENT PLACED AND WITNESSED 3/22/68

WITNESSES TO CORNER.....



CIRCLE CORNER REGISTERED

8" J. Pine N 7 W 42.5

7" Balsam S 83 E 50.0

AND

DESCRIPTION IN DETAIL AS TO HOW CORNER WAS LOCATED AND IDENTIFIED OR RESTORED.

This corner was restored during a survey of Section 7. Found old squared post at corner probably as established by Fargo Engineering Company for Consumer Power. A slab from the face of the SW USBT stump is all that remains, but this shows good notch and plain scribes. Took face in for preservation.

SURVEYOR'S SEAL

SIGNED *Robert D. Osting* DATE 3/28/68
REGISTERED LAND SURVEYOR #10068