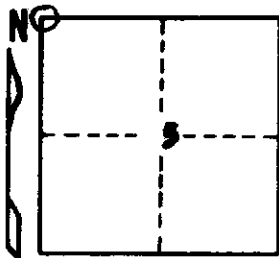


✓
STATE OF MICHIGAN
DEPARTMENT
OF
NATURAL RESOURCES
LAND CORNER RECORD

Dickinson COUNTY
T 43-44N R 28W

DESCRIPTION OF CORNER Section Corner 5, 6, 31, and 32
CORNER MONUMENT 1" I.D. x 36" iron pipe with 4" aluminum cap
DATE MONUMENT PLACED AND WITNESSED September 30, 1969
WITNESSES TO CORNER..... Aspen 10 S88°W 32 lks. "86, MBT"



Aspen 8 N27°W 21 lks. "831, MBT"
Aspen 7 S79½°E 35 lks. "85, MBT"
AND

CIRCLE CORNER REGISTERED

DESCRIPTION IN DETAIL AS TO HOW CORNER WAS LOCATED AND IDENTIFIED OR RESTORED.

Monument placed proportionally on line between a re-established section corner 80.68 chains east and an original township corner 79.93 chains west. These measurements seem to best fit the available evidence as found in original field note calls to natural objects and with measurements along a parallel 2-mile segment of line along the south boundaries of Section 5 & 6.

SURVEYOR'S SEAL

DISTRIBUTION:

SIGNED

Arthur O. Enger
REGISTERED LAND SURVEYOR

DATE

1/28/71

County Courthouse
Area Forester (Regions I & II)
District or Region Surveyor
Forestry Div., Lansing

R 4047
Rev. 10/68