

STATE OF MICHIGAN
DEPARTMENT
OF
NATURAL RESOURCES
LAND CORNER RECORD

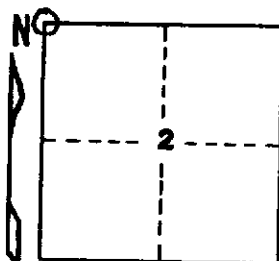
Dickinson COUNTY
T 43-44N R 28W

DESCRIPTION OF CORNER Section Corner 2, 3, 34, and 35

CORNER MONUMENT 1" I.D. x 36" iron pipe with 4" aluminum cap.

DATE MONUMENT PLACED AND WITNESSED October 21, 1969

WITNESSES TO CORNER..... Basswood 12 S83°E (mag.) 116 lks. "S2, NBT"



Balsam 13 S76½°W (mag.) 114½ lks. "S3, NBT"

AND

CIRCLE CORNER REGISTERED

DESCRIPTION IN DETAIL AS TO HOW CORNER WAS LOCATED AND IDENTIFIED OR RESTORED.

Corner established by proportionate measurement on line between original corners 1 mile east and 4 miles west.

SURVEYOR'S SEAL

DISTRIBUTION:

SIGNED

Arthur O. Enger
REGISTERED LAND SURVEYOR
Arthur O. Enger

DATE

February 3, 1972

County Courthouse
Area Forester (Regions I & II)
District or Region Surveyor
Forestry Div., Lansing

R 4047
Rev. 10/68