

LAND CORNER RECORDATION CERTIFICATE  
Filing Requirement of Act 74, Mich. P.A. 1970

For corners in  
Dickinson

(County)

Located in:

Corner Code --#

1. Public Land Survey	T	43N	R	29W	65
	T		R		
	T		R		
	T		R		
2. Property Controlling in Section	S	15	T	43N	R 29W
	S	15	T	43N	R 29W
3. Miscellaneous Property in Sec.	S		T		R
	S		T		R

Register of Deeds Stamp & File Number

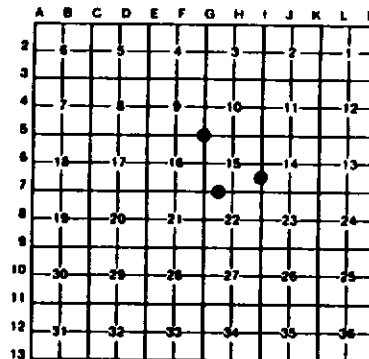
4. Lot No. \_\_\_\_\_, Recorded Plat \_\_\_\_\_  
5. Private Claims \_\_\_\_\_

15 April 28, 1994

65 April 27, 1994

I, Stephan J. Szyszkoski, in a field survey on 14 April 27, 1994, 19\_\_\_\_\_, do hereby certify that under requirements of P.A. 74, Michigan P.A. of 1970, the corner points mentioned in lines 1 and 2 above were in conformance with regulations and rules therefore as required in the current manual of survey instructions of the United States Department of the Interior, Bureau of Land Management or by a decree of a Court of Law and/or that the corner points mentioned in lines 3, 4 and 5 above were in conformance with the rules of the Michigan Board of Land Surveyors or by a Decree of a Court of Law; established, re-established, monumented, re-monumented, recovered, found as expressed below:

NOTE: Not more than 4 corners, all in the same town and range, may be recorded on this certificate.



A. Description of original monument and accessories and/or subsequent restoration:

(65) Section corner common to Sections 9-10-15-16. Original corner established in 1846 by Harvey Mellen as follows: Set cedar post, White Pine 18 S44E 49, White Pine 20 N52W 8. Found no subsequent record.  
(14-Sec.15) South 1/18 corner between Sections 14-15. Corner not established in the original survey. Found no subsequent record.  
(15-Sec.15) West 1/18 corner between Section 15-22. Corner not established in the original survey. Found no subsequent record.

B. Description of corner evidence found and/or method applied in restoring or reestablishing corner:

(65) Original post and accessories not recovered. Found no acceptable evidence of the position of the original corner on the ground. Several old W. Pine stumps are in the area but no markings are visible and no two stumps are in proper relation. Reestablished the corner by double proportionate measurement to the original record between monumented original corners 10546.70' north, 7961.03' east, 2638.82' south, and a restored corner 5269.00' west. At the position for the corner, I placed a 1" I.D. x 32" iron pipe capped with a 4" dia. cast aluminum MGNR tablet, appropriately stamped. From this position, original line calls north to a pond and east to enter swamp check well.  
(14-Sec.15) Found no evidence of prior monumentation at the corner position. Established the corner on a straight line between Quarter corner 1325.33' North and Section corner 1325.33' South. At the position for the corner, I placed a 1" I.D. x 32" iron pipe capped with a 4" dia. cast aluminum MGNR tablet, appropriately stamped.  
(15-Sec.15) Found no evidence of prior monumentation at the corner position. Established the corner on a straight line between Section corner 1362.00' west and Quarter corner 1362.00' east. At the position for the corner, I placed a 1" I.D. x 32" iron pipe capped with a 4" dia. cast aluminum MGNR tablet, appropriately stamped.

C. Description of monument for corner and accessories established to perpetuate locating the position of the corner:

(65) Set 1" pipe with 4" MGNR cap. Blazed and scribed the following new bearing trees: 6" Sugar N46W 16.2' "S9 NBT" 4" Sugar in clump S63E 27.0' "S15 NBT" 5" Sugar S69W 52.3' "S18 NBT" 8" Sugar S89W 58.3' "S16 NBT" Set a 3" squared sugar post adjacent. Centerline of Turner road C. NW-SE is N42E 36'. Bearings are magnetic, distances horizontal.	(14) Set 1" pipe with 4" MGNR cap. Blazed and scribed the following bearing trees: 14" triple Sugar N60E 13.7' "1/168 BT" 6" Ironwood S89E 7.0' "1/168 BT" 7" Sugar S25W 50.8' "1/168 BT" 8" Sugar N63W 21.5' "1/168 BT" Placed a 3" squared sugar post adjacent. Bearings are magnetic, Distances horizontal.	(15) Set 1" pipe with 4" MGNR cap. Blazed and scribed the following bearing trees: 5" Sugar N30W 16.8' "1/168 BT" 4" Sugar N82E 5.5' "1/168 BT" 5" Ironwood S51E 10.9' "1/168 BT" 7" Ironwood S49W 41.8' "1/168 BT" Set a 2" squared sugar post adjacent. Bearings are magnetic.
--	---	---

Signed by Stephan J. Szyszkoski Date 7-14-94

Surveyor's Michigan License No. 33986

