

SURVEY & REMONUMENTATION

NOV 12 1997

COMMISSION

LAND CORNER RECORDATION CERTIFICATE Filing Requirement of Act 74, Mich. P.A. 1970

For corners in

Gogebic

(County)

Located In:

Corner Code #

1. Public Land Survey

Section 28, 47N, 42W F-G-9

2. Property Controlling in Section

3. Miscellaneous Property in Sec.

4. Lot No. _____, Recorded Plat _____

5. Private Claims _____

Meander corner to sections 21 and 28, T47N, R42W

I, John R. Garske, in a field survey on Sept., 1997 do hereby state that under requirements of P.A. 74, Michigan P.A. of 1970, the corner points mentioned in lines 1 and 2 above were in conformance with regulations and rules therefore as required in the current manual of survey instructions of the United States Department of the Interior, Bureau of Land Management or by a decree of a Court of Law and/or that the corner points mentioned in lines 3, 4 and 5 above were in conformance with the rules of the Michigan Board of Land Surveyors or by a Decree of a Court of Law; established, re-established, monumented, recovered, found as expressed below:

NOTE: Not more than 2 corners, all in the same town and range, may be recorded on this certificate.

A. Description of original monument and accessories and/or subsequent restoration:

Original survey by by A. Merryweather, D.S. 1851
Hemlock 8" in tree
Hemlock 20" south 5 links

1971 Arthur Enger RLS 13581 with Mich. Dept. of Conservation set the corner from the Lieberthal Plat and recorded it on L1, pg. 33. He set a 4" alum. cap on 1" I.D. x 36" iron pipe.

B. Description of corner evidence found and/or method applied in restoring or reestablishing corner:

I found the alum. capped monument set by Enger in 1971 flush with the ground in a grass lawn area of a lake lot. I was unable to check his ties to two house corners as they have changed. I accepted Enger's corner position as it has been used and accepted since 1971 and appears to be correctly located as shown on the Lieberthal Plat.

(See sketch on back)

(Research on file)

C. Description of monument for corner and accessories established to perpetuate locating the position of the corner:

Found 4" alum. capped monument from which I established:
Center of light pole/dockhoist N24°W
12" Hemlock S08°W
1/2" iron rod N39°-07'-57"W
1/2" iron rod S0°47'08"E

35.85 feet
6.31 feet(set alum. nail)
93.32 feet
11.40 feet

Signed by John R. Garske
Surveyor's Michigan License No. 28410

Date 10/7/97

Register's Office } ss.
Gogebic County }

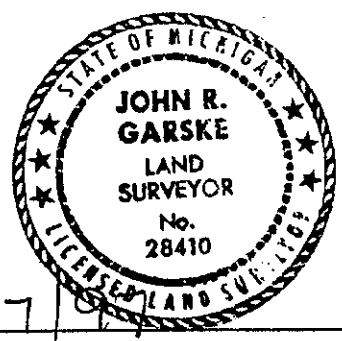
Received for record the
9th day of OCTOBER
A. D. 1997 at 11:00 o'clock
A m., and recorded in
Liber 6 of CORNERS
on page 241
Ramona Collins Deputy
Register of Deeds

Register of Deeds Stamp & File Number

	A	B	C	D	E	F	G	H	I	J	K	L	M
1													
2	6		5		4		3		2		1		
3													
4	7		8		9		10		11		12		
5													
6	18		17		16		15		14		13		
7													
8	19		20		21		22		23		24		
9													
10	30		29		28		27		26		25		
11													
12	31		32		33		34		35		36		
13													

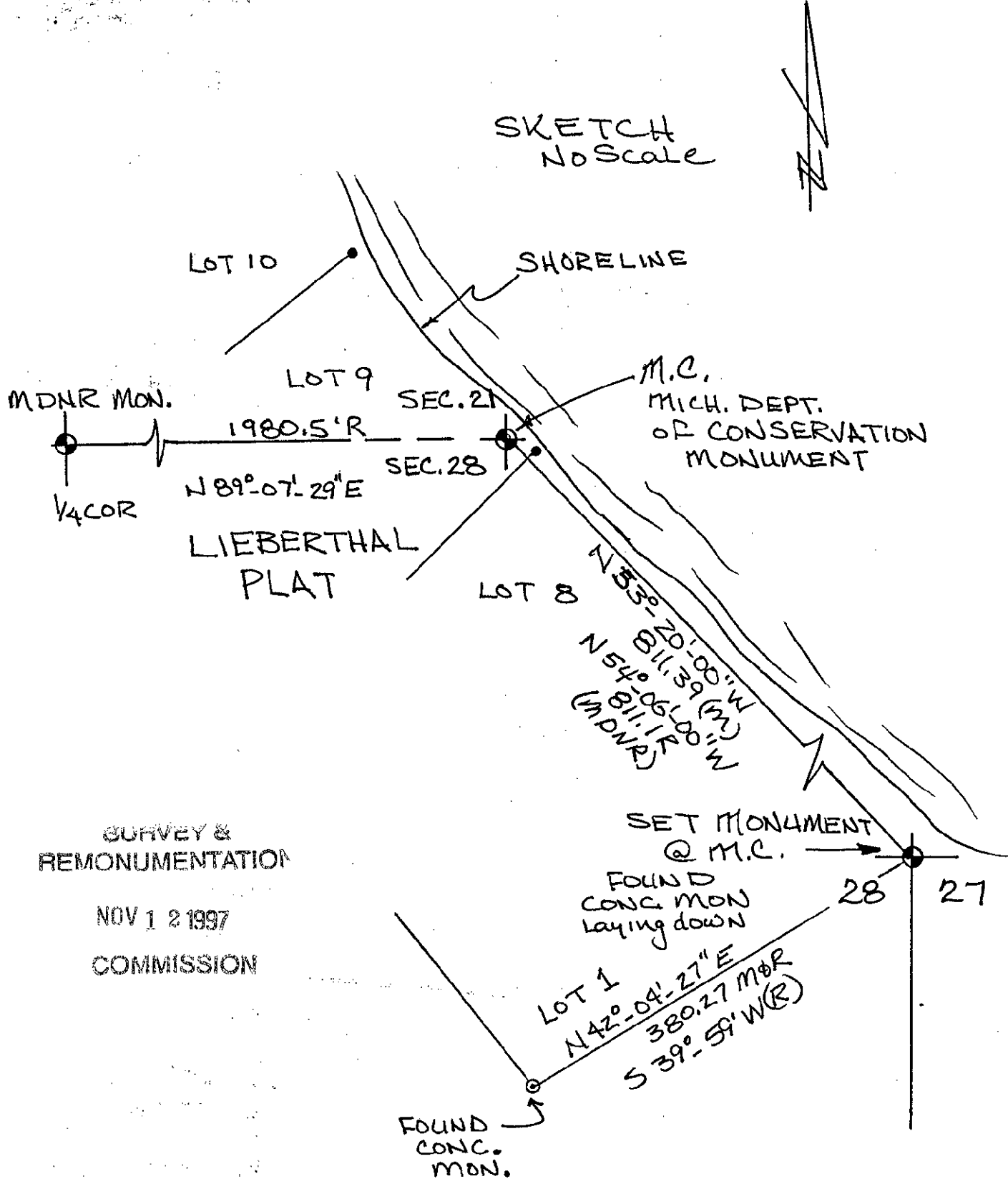
PEER GROUP APPROVED

Richard L. Draker 10/8/97
COUNTY REPRESENTATIVE



47-42/FG-9

SKETCH
No Scale



SURVEY &
REMONUMENTATION

NOV 12 1997

COMMISSION