

SURVEY & REMONUMENTATION

OCT 8 1996

COMMISSION

LAND CORNER RECORDATION CERTIFICATE Register's Office
Filing Requirement of Act 74, Mich. P.A. 1970 Gogebic County ss.

For corners in Gogebic
(County)

Located in:

Corner Code #

1. Public Land Survey Section 29 T 47N R 46W E-11
2. Property Controlling in Section S T R
3. Miscellaneous Property in Section S T R

4. Lot No. , Recorded Plat
5. Private Claims

The section corner common to Sections 28, 29, 32, 33, T47N, R46W.

I, John R. Garske, in a field survey on July 18, 1996, do hereby certify that under requirements of P.A. 74, Michigan P.A. of 1970, the corner points mentioned in lines 1 and 2 above were in conformance with regulations and rules thereof as required in the current manual of survey instructions of the United States Department of the Interior, Bureau of Land Management or by a decree of a Court of Law and/or that the corner points mentioned in lines 3, 4 and 5 above were in conformance with the rules of the Michigan Board of Professional Surveyors or by a Decree of a Court of Law; established, re-established, monumented, re-monumented, recovered, found as expressed below:

NOTE: Not more than 4 corners, all in the same town and range, may be recorded on this certificate.

A. Description of original monument and accessories and/or subsequent restoration:

- In June, 1851, Austin Burt, U.S. Deputy Surveyor, set a post with the following bearing trees:
28" elm - S65°E - 38 links (25.08')
10" Y. birch - N78°W - 24 links (15.84')

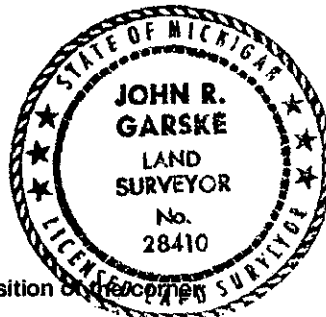
B. Description of corner evidence found and/or method applied in restoring or reestablishing corner:

I reestablished the corner position at the centerline of Blueberry Lane opposite an ancient fence line running east. The fence is in the center of a huge rock wall with large trees now growing in it. Measurements north and south to occupation/fence lines were taken to verify this position. Measurements to monumented corners north, west and east were also used to verify this position.

(See sketch on back.)

Record Research on file.

PEER GROUP APPROVED
Richard L. Wain 8/14/96
COUNTY REPRESENTATIVE



C. Description of monument for corner and accessories established to perpetuate locating the position of the corner:

I set a 3 1/4" diameter aluminum cap atop a 3/4" x 18" rebar 0.20 feet below road surface. The cap is stamped: County Remonumentation, T47N, R46W, 29, 28, 32, 33, 1996, R.L.S. 28410. The following bearing trees and/or reference objects were established:

- 8" sugar - N53°W - 36.58 feet
- 4" sugar - N85°E - 24.27 feet
- 6" R. maple - S40°W - 33.11 feet

Set a 2 1/2" diameter 30" aluminum pipe with 3 1/4" diameter aluminum cap stamped: County Remonumentation, T47N, R46W, R.M., 29, 28, 32, 33, 1996, R.L.S. 28410, N37°W, 20.34 feet.

Signed by John R. Garske

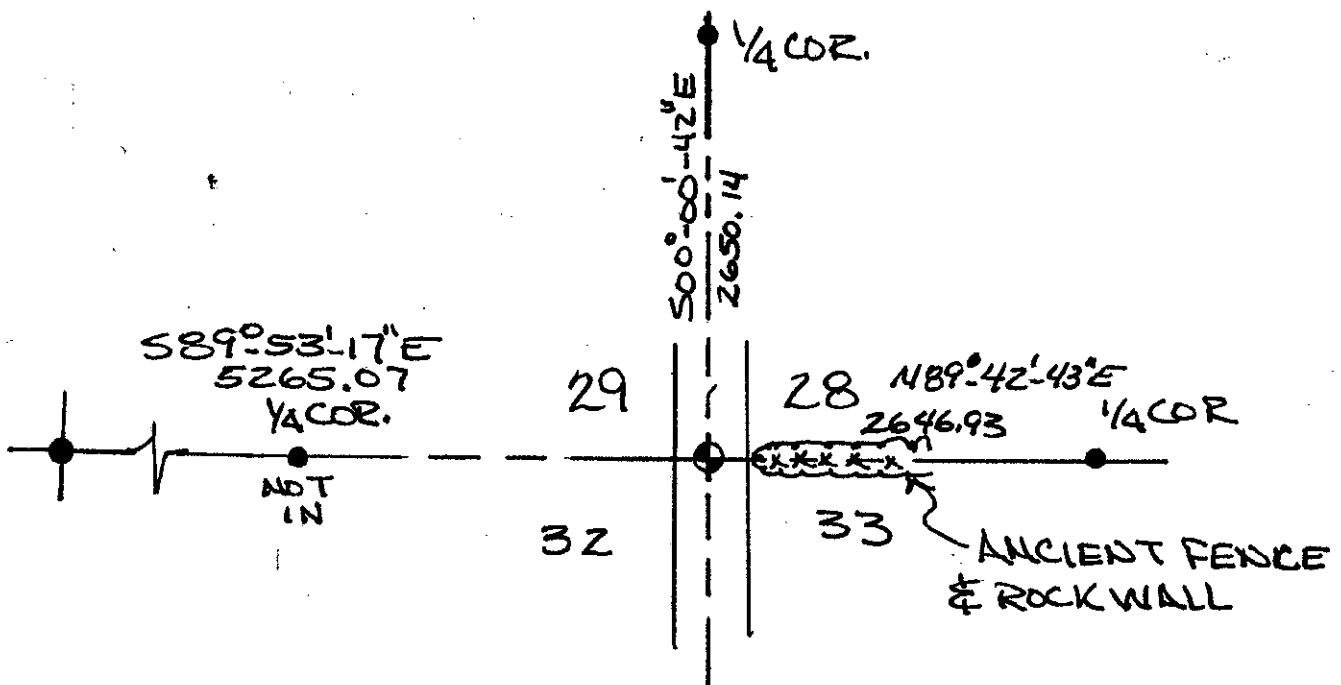
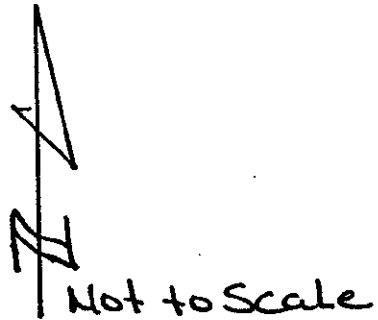
Date 8-4-96

Surveyor's Michigan License No. 28410

FORM APPROVED BY MICHIGAN STATE BOARD OF PROFESSIONAL SURVEYORS, JAN. 28, 1971
REVISED MAY 14, 1975
REVISED JAN., 1983

SKETCH

T.47N., R.46W.
E-11



SURVEY &
REMONUMENTATION

OCT 03 1996

COMMISSION