

SURVEY &
REMONUMENTATION

SEP 29 1994

COMMISSION

LAND CORNER RECORDATION CERTIFICATE
Filing Requirement of Act 74, Mich. P.A. 1970

For corners in

Gogebic
(County)

Located In:

Corner Code ##

1. Public Land Survey

T 48N R 46W

C-12

T R

T R

T R

S T R

2. Property Controlling
in Section

S T R

3. Miscellaneous
Property in Sec.

S T R

4. Lot No. , Recorded Plat

5. Private Claims

I, John R. Garske, in a field survey on July 26, 19 94,
do hereby certify that under requirements of P.A. 74, Michigan P.A. of 1970, the corner points mentioned
in lines 1 and 2 above were in conformance with regulations and rules therefore as required in the
current manual of survey instructions of the United States Department of the Interior, Bureau of Land
Management or by a decree of a Court of Law and/or that the corner points mentioned in lines 3, 4 and 5
above were in conformance with the rules of the Michigan Board of Land Surveyors or by a Decree of a
Court of Law; established, re-established, monumented, re-monumented, recovered, found as
expressed below:

**NOTE: Not more than 4 corners, all in the same town and range, may be recorded
on this certificate.**

A. Description of original monument and accessories and/or subsequent restoration:

- June 1851, Austin Burt set a wood post from which a hemlock 18" bears - S48°E, 15 links; sugar 10" bears N24°W, 45 links. No original evidence exists due to logging, farming and road construction.
- Several recorded subdivisions are referenced to said corner position including the Plat of Headwall Estates, Viking Village, Alpen Village North & South, Powdervale, Big Powderhorn Plat No. 1 and Mountain View Sub.
- Various survey of record by several surveyors.
- Survey by J. Goss, RLS 23509 and J.R. Garske, RLS 28410, dated 5/29/84 found P.K. nailand recorded in Liber 1, P. 585. Accessories: P. pole - S35°W, 56.84 feet; P. pole - S40°E, 52.80 feet.

B. Description of corner evidence found and/or method applied in restoring or reestablishing corner:

Corner was obliterated by utility construction and restored through surveys of record and found recorded plat monuments. Monumented corner position as noted below to state and county specifications.

Record research form filed with county representative.

Register's Office
Gogebic County

Received for record the
16TH day of SEPTEMBER
A. D. 19 94 at 3:20 o'clock
P m., and recorded in
Liber 5 of CORNERS
on page 100
Ramona Collins, Dep
Register of Deeds

Register of Deeds Stamp & File Number

	A	B	C	D	E	F	G	H	I	J	K	L	M
2	6		5		4		3		2		1		
3													
4	7		8		9		10		11		12		
5													
6	18		17		16		15		14		13		
7													
8	19		20		21		22		23		24		
9													
10	30		29		28		27		26		25		
11													
12	31		32		33		34		35		36		
13													

PEER GROUP

Approved

Richard P. Drahn

9/14/94

C. Description of monument for corner and accessories established to perpetuate locating the position of the corner:

Set "Survey Marker" spike at corner location. I established the following bearing trees and reference objects: Two reference monuments consisting of a 2 1/2" x 30" aluminum pipe with 3 1/4" aluminum cap stamped to indicate the corner position as follows: R.M.#1 - S46°W, 47.20 feet with a steel sign 0.94 feet away; R.M.#2 - N43°W, 53.45 feet with a steel sign post 1.13 feet away; P. pole #50 - S35°W, 56.90 feet; 10" basswood - N56°W, 65.647 feet.

SEE SKETCH ON BACK

Signed by

John R. Garske

Date

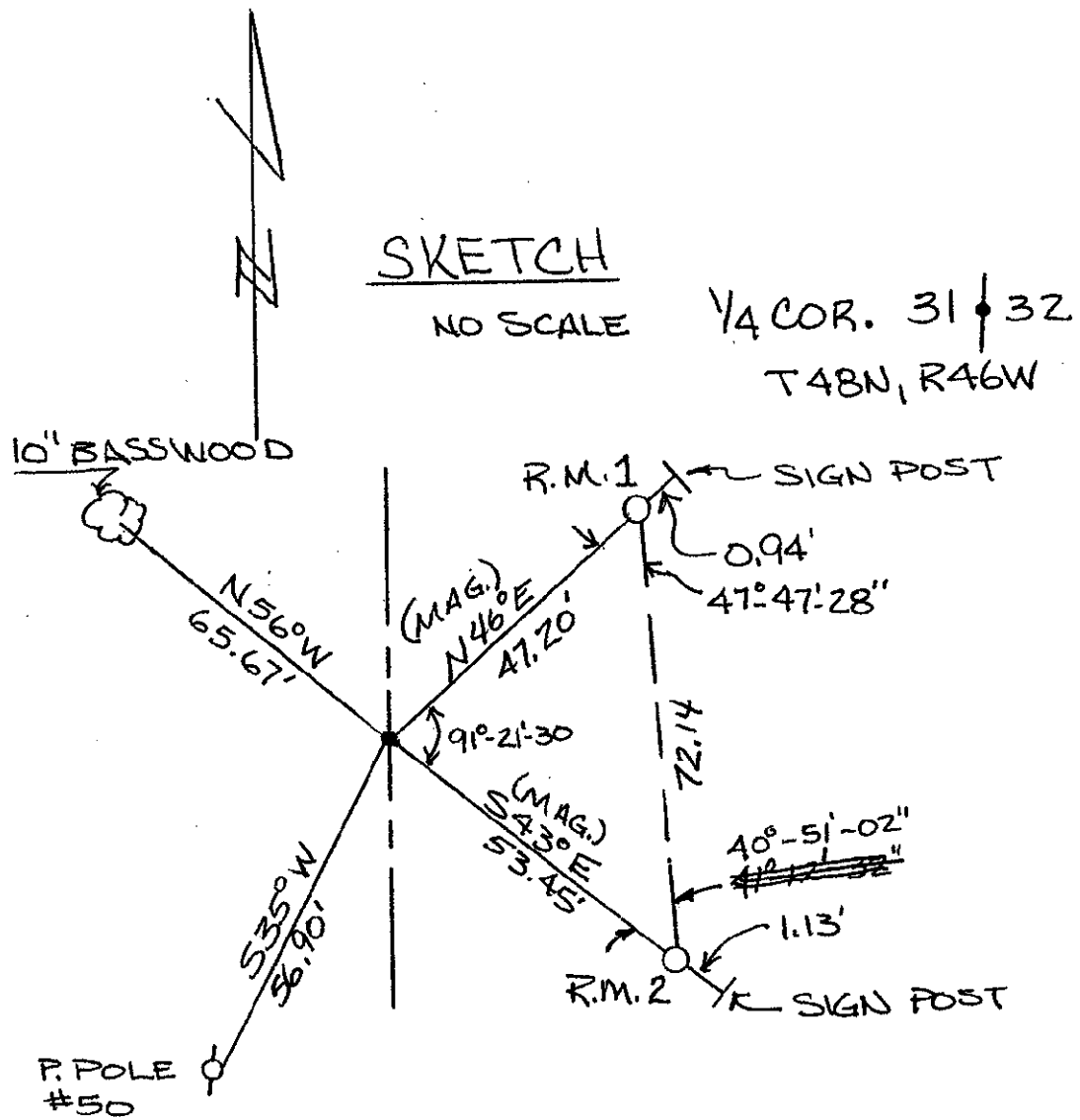
8/31/94

Surveyor's Michigan License No.

28410



FORM APPROVED BY MICHIGAN STATE BOARD OF LAND SURVEYORS, JAN. 28, 1971
REVISED MAY 14, 1975
REVISED JAN., 1983



48-46, C-12

SURVEY &
REMONUMENTATION

SEP 29 1994

COMMISSION