

LAND CORNER RECORDATION CERTIFICATE

Filing Requirement of Act 74, Mich. PA 1970

For Corners In:

Iosco

(County)

Located In

Corner Code #

1. Public Land Survey		T	24N	R	8E	J-5
		T		R		
2. Property Controlling in Section	S 11	T	24N	R	8E	4
	S	T		R		
3. Miscellaneous Property in Section	S	T		R		
	S	T		R		

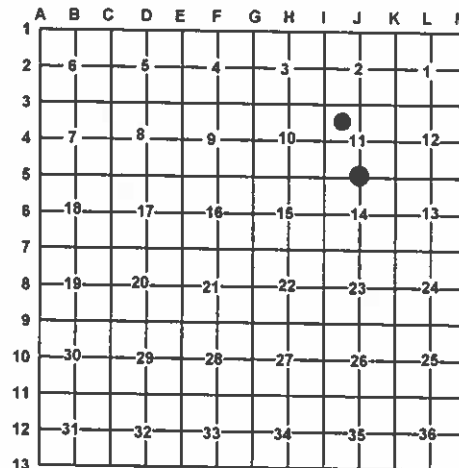
4. Lot No: _____ Recorded Plat: _____

5. Private Claims: _____

I, Carl T. Kiiskila, in a field survey on November 24, 2007 do hereby state that under requirements of PA 74, Michigan PA of 1970, the corner points mentioned in lines 1 and 2 above were in conformance with regulations and rules therefore as required in the current manual of survey instructions of the United States Department of the Interior, Bureau of Land Management or by a decree of a Court of Law and/or that the corner points mentioned in lines 3, 4 and 5 above were in conformance with the rules of the Michigan Board of Land Surveyors or by a Decree of a Court of Law; established, re-established, monumented, recovered, found as expressed below:

NOTE: Not more than 2 corners, all in the same town and range, may be recorded on this certificate.

Register of Deeds Stamp & File Number



A. Description of original monument and accessories and/or subsequent restoration:

J-5 G.L.O. J. Mullett and Wm. Burt 1843 set quarter section post

Wit: Spruce Pine 10" N35°E 11 links
W. Birch 7" N11°W 18 links

4- This corner position was not established during the original government survey.

B. Description of corner evidence found and/or method applies in restoring or re-establishing corner:

J-5 Re-Established the South quarter corner of section 11 by single proportionate measurement.

4- Established the Southwest corner of the Northeast quarter of the Northwest quarter of section 11 as per B.L.M. instructions for the subdivision of a section.

C. Description of monument for corner and accessories established to perpetuate locating the position of the corner:

J-5 Set 1" X 32" pipe with standard DNR cap

Wit: 14" Oak S60°W 31.55'
20" Oak S14°E 42.94'
18" Twin Oak S67°E 67.36'
16" Oak N02°W 12.40'
Blue Carsonite Post North 1'±

4-Set 5/8" X 32" iron rod with P.S. cap #33981

Wit: 14" Oak N81°W 17.83'
8" R. Pine N14°W 48.57'
5" Oak N81°E 5.36'
4" Oak S21°W 32.98'
Fence West 38'
Fence South 45.5'
Blue Carsonite post North 1'±

Signed by:

Carl T. Kiiskila

Date:

4-4-07

Surveyor's Michigan License No.:

33981

