

**LAND CORNER RECORDATION CERTIFICATE**  
**Filing Requirement of Act 74, Mich. P.A. 1970**

For corners in  
Iron

(County)

Located In: Corner Code #

1. Public Land Survey	T 42N	R 32W	D11
	T 42N	R 32W	C11
	T	R	
	T	R	
2. Property Controlling in Section	S	T	R
	S	T	R
3. Miscellaneous Property in Sec.	S	T	R
	S	T	R

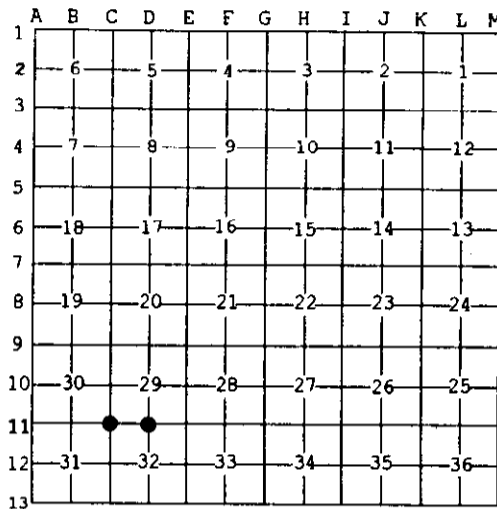
Register of Deeds Stamp & File Number

4. Lot No. \_\_\_\_\_, Recorded Plat \_\_\_\_\_  
 5. Private Claims \_\_\_\_\_

May 07 2003

I, Stephan J. Szyszkoski, in a field survey on \_\_\_\_\_, 20\_\_\_\_ do hereby state that under requirements of P.A. 74, Michigan P.A. of 1970, the corner points mentioned in lines 1 and 2 above were in conformance with regulations and rules therefore as required in the current manual of survey instructions of the United States Department of the Interior, Bureau of Land Management or by a decree of a Court of Law and /or that the corner points mentioned in lines 3, 4 and 5 above were in conformance with the rules of the Michigan Board of Land Surveyors or by a Decree of a Court of Law; established, re-established, monumented, recovered, found as expressed below:

NOTE: Not more than 2 corners, all in the same town and range, may be recorded on this certificate.



A. Description of original monument and accessories and/or subsequent restoration:  
 (D11) Quarter corner common to Sections 29-32. Reestablished in 1971 by A.O. Enger RLS, midway between Section corners. Set 1"IDx36" I.pipe with 4" alum. cap. Red Maple 4 S38W 18.9', WMPC Power Pole #N35-147 N25W 57.0'.  
 (C11) Corner common to Sections 29-30-31-32. Reestablished by proportionate measurement in 1970 by A.O. Enger RLS. Set 1"IDx36" I.pipe with 4" aluminum cap. No NBTs were taken. Original 1/4 corner noted 39.99 chains to the south. Enger's record for D11 shows distance to C11 of 40.058 chains.

B. Description of corner evidence found and/or method applied in restoring or reestablishing corner:  
 (D11) The 1971 monument was recovered in good condition and at record bearing and distance from the NBTs of record. The power pole NBT was found cut off flush with the ground. Left the monument in place and made new witnesses as described below.  
 (C11) Found the 1970 monument in good condition, in accord with Enger's measurements to Quarter corners east (2642.66' M, 2643.8 AOE) and south (2640.04' M, 2639.3' AOE). Left the monument in place and made witnesses as described below.

C. Description of monument for corner and accessories established to perpetuate locating the position of the corner:  
 (D11) Found 1"ID I.pipe with 4" alum. State of Michigan cap. Blazed, scribed, and set measuring nails in:  
 8" Oak N48E 10.5' "1/4S NBT"  
 5" Maple S86E 20.5' do  
 10" Oak S26E 53.15' do  
 7" Maple S39W 19.05' 1971 NBT in good condition. Placed a sq'd cedar post adjacent. Bearings are magnetic. Distances are to nail with tag.  
 (C11) Found 1"ID I.pipe with 4" alum. State of Michigan cap. Blazed, scribed, and set measuring nails in:  
 5" Poplar S32E 18.5' "S32 NBT"  
 7" Poplar S23W 19.8' "S31 NBT"  
 3" twin W.Birch N45W 36.1' "S30 NBT"  
 6" Poplar N09W 40.3' do  
 Set sq'd cedar post adjacent. Bearings are magnetic. Distances are to nail with tag.



Signed by Stephan J. Szyszkoski  
 Surveyor's Michigan License No. 33986

Date 6/2/03