



8 0 2 3 2 6 7
Tx:4016447

11/29/2012 1:00:00 PM

LAND CORNER RECORDATION CERTIFICATE

Filing Requirement of Act 74, Mich. PA 1970

For Corners In:	Located In	Corner Code #
Kalkaska		
(County)		
1. Public Land Survey	T 26N R 6W	D8
	T R	
2. Property Controlling in Section	S 20 T 26N R 6W	1
	S T R	
3. Miscellaneous Property in Section	S T R	
	S T R	

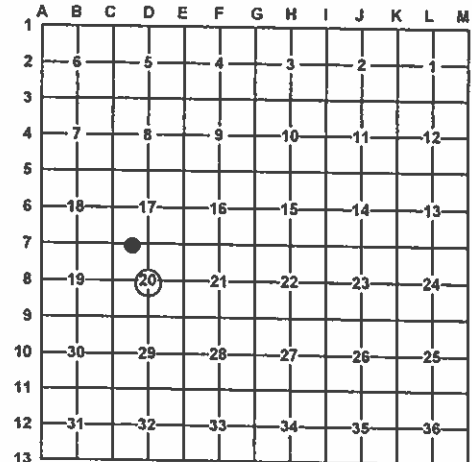
DOCUMENT #
3111409
JOANN DEGRAAF
KALKASKA CTY ROD
KALKASKA, MI
RECORDED ON
11/29/2012 1:31 PM
REC FEE: 14.00
PAGES: 1
BK: 3PG: 333

Register of Deeds Stamp & File Number

4. Lot No: Recorded Plat:
5. Private Claims:

I, Joshua R. Davidson, in a field survey on April 2, 2012 do hereby state that under requirements of PA 74, Michigan PA of 1970, the corner points mentioned in lines 1 and 2 above were in conformance with regulations and rules therefore as required in the current manual of survey instructions of the United States Department of the Interior, Bureau of Land Management or by a decree of a Court of Law and/or that the corner points mentioned in lines 3, 4 and 5 above were in conformance with the rules of the Michigan Board of Land Surveyors or by a Decree of a Court of Law; established, re-established, monumented, recovered, found as expressed below:

NOTE: Not more than 2 corners, all in the same town and range, may be recorded on this certificate.



A. Description of original monument and accessories and/or subsequent restoration:

D8 - 1901 - CSR - Merrill - FB 20, p. 67, No corner description, survey shows distances N-S-E-W.

- 1) Hemlock 20" N30°E 27½
- 2) Maple 14" N60°W 18

1975 - LCRC L.1, P.350 & Certificate of Survey,
L.1, P651 - N. F. Parker, PS #16939 -
Set ½" X 18" iron bar with cap
3) Blaze 12" Maple S45°E 51.0'
4) Blaze 14" Cherry N10°W 13.3'

1 - 1901 - CSR - Merrill - FB 20, p. 67, No corner description, survey shows distance West.

B. Description of corner evidence found and/or method applied in restoring or re-establishing corner:

D8 - Center ¼ corner of section 20, T26N, R6W. Found ½" X 18" CIR #16939 with witness #3, and stump of witness #4 fitting position per LCRC L.1, P.350. No county surveyor evidence found. Replaced found ½" X 18" CIR #16939 with a 2" aluminum cap on a 5/8" X 34" rebar.

1 - W1/16 corner of section 20, T26N, R6W. Found ½" X 24" iron bar 2'± south of centerline gravel road. From iron bar, S16°31'E 6.79' found a 1" pipe. Accepted ½" X 24" iron bar as the best available position of the corner, and replaced with a 2" aluminum cap on a 5/8" X 34" rebar.

C. Description of monument for corner and accessories established to perpetuate locating the position of the corner:

D8 - 2" aluminum cap on a 5/8" X 34" rebar

1 - Set a 2" aluminum cap on a 5/8" X 34" rebar

S86°E 25.96' to set nail & tag in N. side 14" White Pine
S50°E 51.60' to set nail & tag in SW. side 14" R. Maple (#3)
S03°E 2.17' to set nail & tag in E. side power pole
N83°W 26.25' to set nail & tag in N. side 12" Cherry

S68°E 93.57' to set nail & tag in N. side 32" Maple
S16°31'E 6.79' to fd. 1" pipe
S0°34'W 33.00' to set 2" AC
S38°W 51.90' to set nail & tag in SE. side 14" tw. Cherry
N27°W 39.56' to set nail & tag in E. side Power pole
Set blue carsonite post with location tag 33' South

Signed by:

Surveyor's Michigan License No.:

46659



1-29-12