

LAND CORNER RECORDATION CERTIFICATE
Filing Requirement of Act 74, Mich. P.A. 1970

**SURVEY &
REMONUMENTATION**

For corners in

KALKASKA

Located In:

Corner Code #

FEB 26 2001

(County)

2000 REMONUMENTATION

1. Public Land Survey

T 27N R 6W C-4

SECTION

2. Property Controlling
in Section

S T R

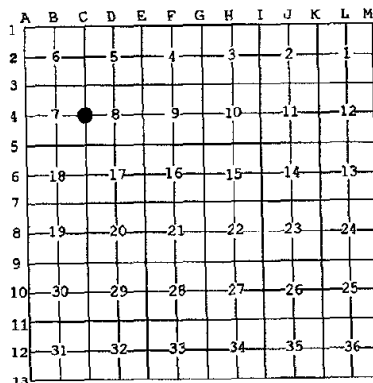
3. Miscellaneous
Property in Sec.

S T R

4. Lot No. , Recorded Plat

5. Private Claims

I, EUGENE FARRIER, in a field survey on August 23, 2000 do hereby state that under requirements of P.A. 74, Michigan P.A. of 1970, the corner points mentioned in lines 1 and 2 above were in conformance with regulations and rules therefore as required in the current manual of survey instructions of the United States Department of the Interior, Bureau of Land Management or by a decree of a Court of Law and for that the corner points mentioned in lines 3, 4 and 5 above were in conformance with the rules of the Michigan Board of Land Surveyors or by a Decree of a Court of Law; established, re-established, monumented, recovered, found as expressed below:



NOTE: Not more than 2 corners, all in the same town and range, may be recorded on this certificate.

A. Description of original monument and accessories and/or subsequent restoration:

C-4: 1/4 Cor. Common to Secs. 7 & 8, T27N-R6W, Excelsior Township

1852, G.L.O. Resurvey, by George H. Cannon, set post for corner, Hemlock 30", S56°E, 34 Lks; Sugar 14", N56°W, 37 Lks

1893, Survey, by E. Mosher (Co. Surveyor), Field Book #5, Pg 49, tied into corner, Cedar 14", N81°W; Cedar 12", East, 26 Lks

1895, Survey, by E.B. Dinnie (Co. Surveyor), Co Rd Bk, stone at corner

1973, LCRC, by J.R. Radcliffe, Liber 1, PG 323, found 5/8" iron at corner in Hagai Road, between fences, power pole, S60°E, 43.27'; power pole, S60°W, 36.67'; power pole, N35°E, 101.84'

1974-1978, LCRC, by J.L. Fletcher (Co. Surveyor), Liber 1, Pg 313 & Survey Liber 1, Pg 542 & Liber 2, Pg 194, 1/2" iron at corner, power pole, S60°W, 36.57'; power pole, S64°W, 43.27'; power pole, N30°E, 101.80'

1981, Survey, by W.B. Batzer, found 1/2" iron rod at corner (about the same as 1974 LCRC above)

2000, Survey, by D.R. Farrier, found 1/2" iron in mon at corner, same as 1974 LCRC above

B. Description of corner evidence found and/or method applied in restoring or reestablishing corner:

C-4: 1/4 Cor. Common to Secs. 7 & 8, T27N-R6W, Excelsior Township

Found 1/2" iron in mon box at corner in centerline of North-South road (Hagai Road). Added standard co. mon. No G.L.O. witnesses were found.

C. Description of monument for corner and accessories established to perpetuate locating the position of the corner:

C-4: 1/4 Cor. Common to Secs. 7 & 8, T27N-R6W, Excelsior Township

Found 1/2" iron in mon box at corner in centerline of North-South road (Hagai Road). Added standard co. mon.

S63°W, 36.61', power pole, set nail & tag

N45°W, 36.95', 4" Ash, set nail & tag

N30°E, 101.68', power pole, set nail & tag

S58°E, 43.21', power pole, set nail & tag

East, 33.00', found iron & cap (Mitchell)

Kalkaska County Peer Group accepted the above monument as the best available evidence of the position of the original corner.

Ratified by Peer Group
P.A. 345 - 1990 Kalkaska County

Chairman Eugene Farrier

Date 2-14-01



Signed by Eugene Farrier
Surveyor's Michigan License No. 24594

Date 2-15-01



Kalkaska County Joan Hall, Register

3026822

Page: 1 of 1
02/15/2001 10:26A
REMON
LB: 8 PG: 151

FORM APPROVED BY MICHIGAN STATE BOARD OF PROFESSIONAL SURVEYORS, JAN. 28, 1971
REVISED MAY 14, 1975
REVISED JAN., 1982
REVISED OCT., 1995