

SURVEY &
REMONUMENTATION
\$7.00
\$2.00
SEP 13 1995

LAND CORNER RECORDATION CERTIFICATE
Filing Requirement of Act 74, Mich. P.A. 1970
KENT COUNTY REMONUMENTATION

For corners in COMMISSION

Kent (County)	Located in:	Corner Code #
1. Public Land Survey	T 5N R 12W	C-6
	T R	
	T R	
	T R	
2. Property Controlling in Section	S T R	
	S T R	
3. Miscellaneous Property in Sec.	S T R	
	S T R	

STATE OF MICHIGAN
COUNTY OF KENT
RECEIVED FOR RECORD
95 AUG 28 AM 10:48
REC. OF DEEDS
8569
Register of Deeds Stamp & File Number

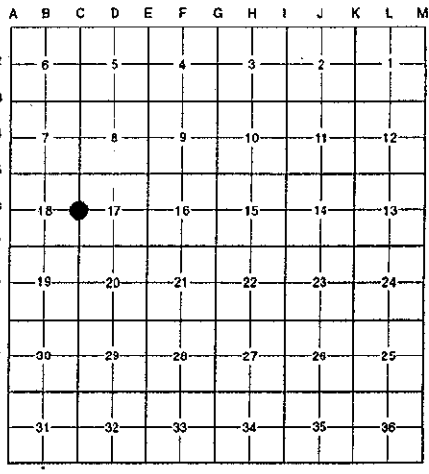
4. Lot No. , Recorded Plat
5. Private Claims

I, Randy Kolehouse, in a field survey on March 14 19 95, do hereby certify that under requirements of P.A. 74 Michigan P.A. of 1970, the corner points mentioned in lines 1 and 2 above were in conformance with regulations and rules therefore as required in the current manual of survey instructions of the United States Department of the interior, Bureau of Land Management or by a decree of a Court of Law and/or that the corner points mentioned in lines 3, 4 and 5 above were in conformance with the rules of the Michigan Board of Land Surveyors or by a Decree of a Court of Law; established, re-established, monumented, re-monumented, recovered, found as expressed below:

NOTE: Not more than 4 corners, all in the same town and range, may be recorded on this certificate.

A. Description of original monument and accessories and/or subsequent restoration:

C-6	1831	G.L.O. Notes	Mullett	Set Post	P.A. 345 1990 KENT COUNTY
	1944	Wit. Map	K.C. Surveyor	2" Pipe	PEER APPROVED 5/25/95
	1978	L.C.R.C. #1216	Exxel Engineering	R.R. Spike	CHAIRMAN Harry Stuber
	1978	L.C.R.C. #1305	Nederveld & Jonker	R.R. Spike	
	1981	L.C.R.C. #1568	Nederveld & Jonker	Fnd. Monument Box/Set K.C. Monument	
	1988	L.C.R.C. #4639	Olson, Meyers & May	K.C. Monument	



This corner was originally approved by the Kent County Remonumentation Peer Group and monumented by Nederveld & Jonker on 1/8/81 and was recorded per L.C.R.C. #1568.

B. Description of corner evidence found and/or method applied in restoring or reestablishing corner:

C-6 Found standard Kent County Monument in a monument box 1' M/L East of the C/L of Wilson Avenue running N-S on line of tree row running West per L.C.R.C.'s #1568 and #4639 as set by Nederveld & Jonker in place of a 3/4" iron in a monument box they found which checked L.C.R.C.'s #1216 and #1305 and one remaining witness from 1944 K.C. Surveyor's records.

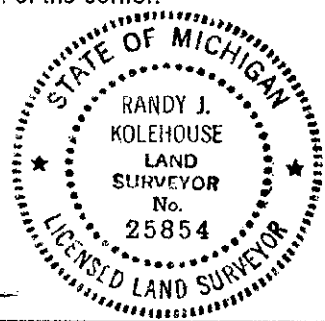
L.C.R.C. #1568	L.C.R.C. #4639
Nail & Remon. tag on E side 12" Elm SSW 98.91'	New nail & Remon tag on E sde 14" Elm S 20 W 98.91'
Nail & Remon. tag on S side 36" Oak WSW 32.75'	Nail & Remon tag on S sde 38" Oak S 83 W 32.75'
Nail & Remon. tag on W side P. pole NNE 146.10'	New nail & Remon tag on W sde P pole N 15 E 146.10'
Most 3'ly corner brick planter WNW 149.93'	Most E'ly cor brick planter N 60 W 149.93'

The selected location is accepted by me and is generally accepted by professional surveyors as the best available evidence of the position of the original corner.

C. Description of monument for corner and accessories established to perpetuate locating the position of the corner:

C-6 Standard Kent County Monument in a Monument Box

Nail & K.C. remon. tag on S side 38" Oak S 83° W 32.66'
Nail & K.C. remon. tag on W side P. pole N 15° E 146.10'
Most E'ly cor. brick planter N 60° W 149.93'
Nail & K.C. remon. tag on E side 14" Elm S 20° W 99.11'
C/L of blacktop West 1' M/L on tree row running West



Signed by Randy J. Kolehouse Date 8/21/95
EARTH TECH

Surveyor's Michigan License No. 25854