

\$7.00
\$2.00 SLP 1 3 1995

COMMISSION

LAND CORNER RECORDATION CERTIFICATE
Filing Requirement of Act 74, Mich. P.A. 1970
KENT COUNTY REMONUMENTATION

For corners in

	Kent (County)	Located in:	Corner Code #
1. Public Land Survey		T <u>5N</u> R <u>12W</u>	<u>F-7</u>
		T _____ R _____	_____
		T _____ R _____	_____
		T _____ R _____	_____
2. Property Controlling in Section	S _____ T _____	R _____	_____
	S _____ T _____	R _____	_____
3. Miscellaneous Property in Sec.	S _____ T _____	R _____	_____
	S _____ T _____	R _____	_____

STATE OF MICHIGAN
COUNTY OF KENT
RECEIVED FOR RECORD
95 AUG 28 AM 10:50
REG. OF DEEDS
8600
Register of Deeds Stamp & File Number

4. Lot No. _____, Recorded Plat _____
5. Private Claims _____

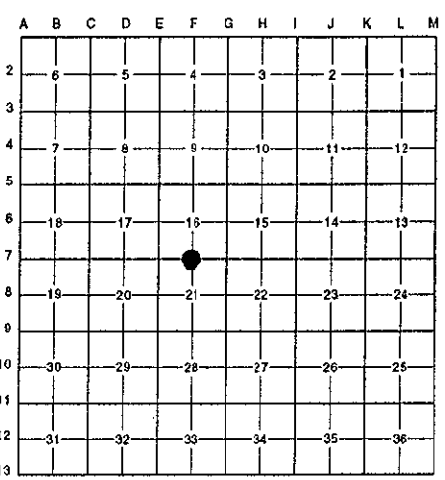
I, Randy Kolehouse, in a field survey on April 13 19 95, do hereby certify that under requirements of P.A. 74 Michigan P.A. of 1970, the corner points mentioned in lines 1 and 2 above were in conformance with regulations and rules therefore as required in the current manual of survey instructions of the United States Department of the interior, Bureau of Land Management or by a decree of a Court of Law and/or that the corner points mentioned in lines 3, 4 and 5 above were in conformance with the rules of the Michigan Board of Land Surveyors or by a Decree of a Court of Law; established, re-established, monumented, re-monumented, recovered, found as expressed below:

NOTE: Not more than 4 corners, all in the same town and range, may be recorded on this certificate.

A. Description of original monument and accessories and/or subsequent restoration:

F-7	1831	G.L.O. Notes	Mullett	Set Post
	1938	Wit. Map	K.C. Surveyor	2" Pipe
	1966	Wit. Map	K.C. Surveyor	2" Pipe in Monument Box
	1975	L.C.R.C. #835	Exxel Engineering	Fnd. 3/4" Iron in Mon. Box
	1981	L.C.R.C. #1580	Nederveld & Jonker	Fnd. 3/4" Iron in Mon. Box/Set K.C. Monument
	1988	L.C.R.C. #4650	Olson, Meyers & May	K.C. Monument

P.A. 345 1990 KENT COUNTY
PEER APPROVED 5/25/95
CHAIRMAN Randy Kolehouse



This corner was originally approved by the Kent County Remonumentation Peer Group and monumented by Nederveld & Jonker on 1/12/81 and was recorded per L.C.R.C. #1580.

B. Description of corner evidence found and/or method applied in restoring or reestablishing corner:

F-7 Found standard Kent County Monument in a monument box at C/L of 84th Street running E-W and C/L of tree row running N-S per Kent County Surveyor Wit. Map (1961) and L.C.R.C.'s #1580 and #4650 as set by Nederveld & Jonker in place of a 3/4" iron in monument box they found which checked L.C.R.C. #835.

L.C.R.C. #1580

Nail & Remon. tag on E side T. pole NNW 26.54'
Nail & Remon. tag on E side P. pole SSW 23.39'
Centerline MH E 4.5'
NW cor. bldg. SE 93.18'

L.C.R.C. #4650

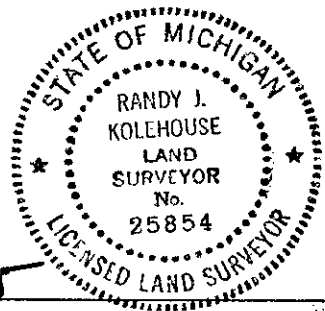
Nail & Remon. tag on E sde T pole N 10° W 26.64'
Nail & Remon. tag on E sde P pole S 10° W 23.31'
C/L MH E 4.65'
NW cor brick bldg S 25° E 93.05'

The selected location is accepted by me and is generally accepted by professional surveyors as the best available evidence of the position of the original corner.

C. Description of monument for corner and accessories established to perpetuate locating the position of the corner:

F-7 Standard Kent County Monument

Nail & K.C. remon. tag on W side P. pole S 10° W 23.44'
Nail & K.C. remon. tag on E side T. pole N 10° W 26.64'
NW cor. brick bldg. S 25° E 93.05'
C/L M.H. E 4.65'



Signed by Randy J. Kolehouse
EARTH TECH

Date 8/21/95

Surveyor's Michigan License No. 25854