

SEP 13 1995

COMMISSION

LAND CORNER RECORDATION CERTIFICATE
Filing Requirement of Act 74, Mich. P.A. 1970
KENT COUNTY REMONUMENTATION

For corners in

Kent
(County)

Located in:

Corner Code #

1. Public Land Survey

T 5N R 12W

J-7

2. Property Controlling
in Section

S T

R

3. Miscellaneous

S T

R

Property in Sec.

S T

R

4. Lot No. , Recorded Plat

5. Private Claims

REG. OF DEEDS

8640

Register of Deeds Stamp & File Number

95 AUG 28 AM 10:53

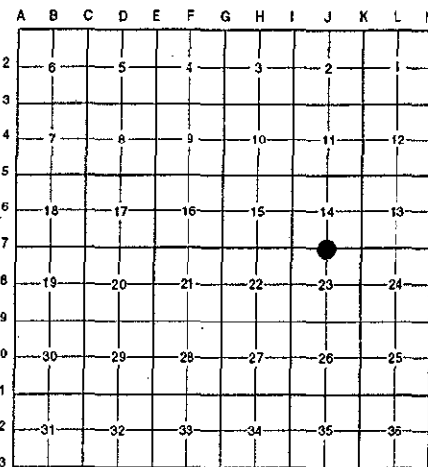
STATE OF MICHIGAN
COUNTY OF KENT
RECEIVED FOR RECORD

I, Randy Kolehuse, in a field survey on April 6 19 95,
do hereby certify that under requirements of P.A. 74 Michigan P.A. of 1970, the corner points
mentioned in lines 1 and 2 above were in conformance with regulations and rules therefore as required
in the current manual of survey instructions of the United States Department of the interior, Bureau of
Land Management or by a decree of a Court of Law and/or that the corner points mentioned in lines 3,
4 and 5 above were in conformance with the rules of the Michigan Board of Land Surveyors or by a
Decree of a Court of Law; established, re-established, monumented, re-monumented, recovered,
found as expressed below:

NOTE: Not more than 4 corners, all in the same town and range, may be recorded
on this certificate.

A. Description of original monument and accessories and/or subsequent restoration:

J-7	1831	G.L.O. Notes	Mullett	Set Post
	1959	Wit. Map	K.C. Surveyor	1 1/2" Iron
	1977	L.C.R.C. #1041	Exxel Engineering	Found Iron in Mon. Box
	1982	L.C.R.C. #3133	Exxel Engineering	Found 3/4" Iron in Mon. Box
	1991	L.C.R.C. #6340	Chris Marschall	K.C. Monument



P.A. 345 1990 KENT COUNTY

PEER APPROVED 6/27/95

CHAIRMAN Randy Kolehuse

This corner was originally approved by the Kent County Remonumentation Peer Group and monumented by Exxel Engineering
on 10/11/82 and was recorded per L.C.R.C. #3133.

B. Description of corner evidence found and/or method applied in restoring or reestablishing corner:

J-7 Found standard Kent County Monument in monument box on C/L of 84th Street running E-W per L.C.R.C.'s #3133 and #6340
as set by Exxel Engineering in place of a 3/4" iron in monument box they found which checked L.C.R.C.'s #472 and #1041.

L.C.R.C. #3133

Nail & KC tag in NW'ly sde P. Pole (1' above ground)
S35°W 42.89'

L.C.R.C. #6340

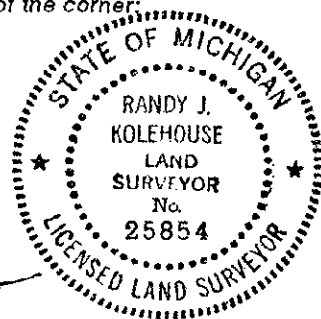
Nail & Tag NW sd. 14" Maple N 45° E 109.36'
Nail & Tag NW sd. 16" Locust N 31° E 129.82'
Nail & Tag W sd. 16" Cherry N 12° W 79.71'
Nail & Tag W sd. P.P. S 36° W 42.89'

The selected location is accepted by me and is generally accepted by professional surveyors as the best available evidence
of the position of the original corner.

C. Description of monument for corner and accessories established to perpetuate locating the position of the corner:

J-7 Standard Kent County Monument in a Monument Box

Nail & K.C. remon. tag on NW side 14" Maple N 45° E 109.36'
Nail & K.C. remon. tag on NW side 16" Locust N 31° E 129.82'
Nail & K.C. remon. tag on W side 16" Cherry N 12° W 79.71'
Nail & K.C. remon. tag on W side P. pole S 36° W 42.89'



Signed by Randy J. Kolehuse

Date 8/21/95

Surveyor's Michigan License No. 25854