

SURVEY & REMONUMENTATION

KENT COUNTY REMONUMENTATION

FEB 14 1997

LAND CORNER RECORDATION CERTIFICATE
Filing Requirement of Act 74, Mich. P.A. 1970

COMMISSION

For corners in
KENT COUNTY

Located In:

Corner Code #

1. Public Land Survey

T___ R___
T___ R___
T___ R___
T___ R___

2. Property Controlling
In Section

S 31 T 8N R 11W

3. Miscellaneous
Property in Sec.

S___ T___ R___
S___ T___ R___

Wit. Monuments
on E-W 1/4 line
E. of W 1/4 cor.

4. Lot No. _____, Recorded Plat _____
5. Private Claims _____

I, Kirk Breitels, in a field survey on Oct. 17, 1996 do hereby state that under requirements of P.A. 74, Michigan P.A. of 1970, the corner points mentioned in lines 1 and 2 above were in conformance with regulations and rules therefore as required in the current manual of survey instructions of the United States Department of the Interior, Bureau of Land Management or by a decree of a Court of Law and/or that the corner points mentioned in lines 3, 4 and 5 above were in conformance with the rules of the Michigan Board of Land Surveyors or by a Decree of a Court of Law, established, re-established, monumented, recovered, found as expressed below:

NOTE: Not more than 2 corners, all in the same town and range, may be recorded on this certificate.

A. Description of original monument and accessories and/or subsequent restoration:

1831---GLO---Not Set

1900---"Rodgers & McDonald Addition" (L. 16, Pg. 3)---T.O. Williams---P.O.B. from SE cor. W 1/2 NW 1/4 along E-W 1/4 line (C/L Lamoreaux St.-now School St.)

1902---"Lamoreaux Addition" (L. 16, Pg. 21)---T.O. Williams---P.O.B. from the NE cor. W 1/2 SW 1/4 along E-W 1/4 line (C/L Lamoreaux St.-now School St.)

1957---Survey Notes---Reda---E-W 1/4 line run East from W 1/4 cor. 357.56' to a "Mon." and defl. 0°43' Rt. then East through various points.

1960's---Mich. Dept. State Hwy.---Hwy. Right-of-Way book shows same E-W 1/4 line as run by Reda ± to Grand River.

B. Description of corner evidence found and/or method applied in restoring or reestablishing corner:

Found "State of Michigan" monument 357.35' (357.56' Reda & MDSH) East of the West 1/4 corner. Found "T" Iron at the Easterly Right-of-Way (North) of the M.N. R.R. Holding a line from W 1/4 cor. of Sec. 31 to the "State of Michigan" Monument to the "T" Iron produces a deflection of 0°43'25" Rt. (0°43' Reda & 0°43'46" MDSH). Irons on the North and South line of School St. ("Rodgers & McDonald Add." & "Lamoreaux Add.") fit this line 0.1'-0.8'. Various deeds in the W 1/2 of Sec. 31 use the same calls as found in the MDSH Right-of-Way book for the E-W 1/4 line of Sec. 31. See Sketch Over The "State of Michigan" Monument and the aforementioned "T" Iron are accepted by me and is generally accepted by professional surveyors as the best available evidence of the position of the property controlling corners.

C. Description of monument for corner and accessories established to perpetuate locating the position of the corner:

Set Kent Co. Wit. Mon. place of "T" Iron
Nail & KC tag SW side PP N50°W 98.31'
Nail & KC tag W. side PP N10°W 174.52'
C/L top fire hydrant S55°W 122.14'
NW cor. steel bldg. S15°E 34.55'
Nail & KC tag W. side PP S30°W 13.63'
"T" Iron - West 9.43'

"State of Michigan" Monument
Nail & KC tag S. side PP N65°E 10.30'
Nail & KC tag W. side PP N10°W 61.45'
Nail & KC tag S. side PP N80°W 19.34'
N. edge 2.5' dia. CB cover S10°W 99.82'

Signed by Kirk Breitels
Surveyor's Michigan License No. 30077

Date 11/1/96

P.A. 345 1990 KENT COUNTY

PEER APPROVED 10/24/96

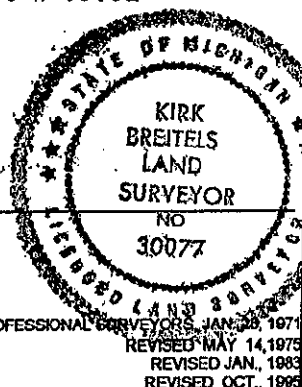
CHAIRMAN Harry J. Kuper

FORM APPROVED BY MICHIGAN STATE BOARD OF PROFESSIONAL SURVEYORS, JAN. 28, 1971
REVISED MAY 14, 1975
REVISED JAN., 1983
REVISED OCT., 1995

"other" code #
26

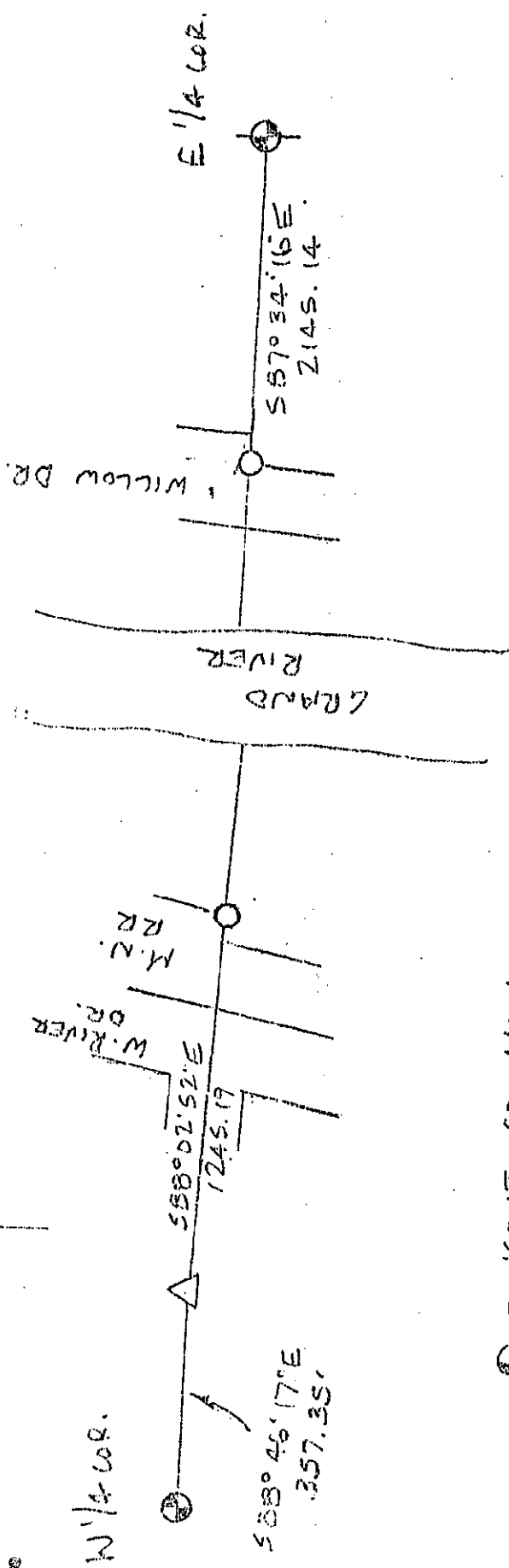
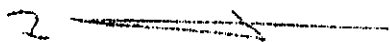
STATE OF MICHIGAN
COUNTY OF KENT
RECEIVED FOR RECORD
96 NOV -7 AM 9:38
REG. OF DEEDS
9421 A
Register of Deeds Stamp & File Number

A	B	C	D	E	F	G	H	I	J	K	L	M
1												
2	6		5		4		3		2		1	
3												
4	7		8		9		10		11		12	
5												
6	16		17		16		15		14		13	
7												
8	19		20		21		22		23		24	
9												
10	30		29		28		27		26		25	
11												
12	31		32		33		34		35		36	
13												



9421B

E-W 1/4 LINE
SEC. 31
PLAINFIELD TWP.
(NO SCALE)



- = KENT CO. MON.
- = STATE OF MICHIGAN MON.
- = SET KENT CO. WIT. MON.

SURVEY &
REMONUMENTATION
FEB 14 1997
COMMISSION