

KENT COUNTY REMONUMENTATION
LAND CORNER RECORDATION CERTIFICATE

Filing Requirement of Act 74, Mich. P.A. 1970
 Oakfield Township

STATE OF MICHIGAN
 COUNTY OF KENT
 RECEIVED FOR RECORD
 93 AUG 26 PM 4:20

For corners in

Kent

(County)

Located In:

Corner Code #

1. Public Land Survey

T ___ R ___

T ___ R ___

T ___ R ___

T ___ R ___

2. Property Controlling
 in Section

S 27 T 9N R 9W

S ___ T ___ R ___

3. Miscellaneous
 Property in Sec.

S ___ T ___ R ___

S ___ T ___ R ___

Witness Corner

to Center of

Section 27

4. Lot No. _____, Recorded Plat _____

5. Private Claims _____

Prop Control #3
other
 REG. OF DEEDS
 6822
 Register of Deeds Stamp & File Number

I, Chris Marschall, in a field survey on June 11, 1993

do hereby certify that under requirements of P.A. 74, Michigan P.A. of 1970, the corner points mentioned in lines 1 and 2 above were in conformance with regulations and rules therefore as required in the current manual of survey instructions of the United States Department of the Interior, Bureau of Land Management or by a decree of a Court of Law and/or that the corner points mentioned in lines 3, 4 and 5 above were in conformance with the rules of the Michigan Board of Land Surveyors or by a Decree of a Court of Law; established, re-established, monumented, re-monumented, recovered, found as expressed below:

NOTE: Not more than 4 corners, all in the same town and range, may be recorded on this certificate.

	A	B	C	D	E	F	G	H	I	J	K	L	M
2	6		5		4		3		2		1		
3													
4	7		8		9		10		11		12		
5													
6	18		17		16		15		14		13		
7													
8	19		20		21		22		23		24		
9													
10	30		29		28		27		26		25		
11													
12	31		32		33		34		35		36		
13													

A. Description of original monument and accessories and/or subsequent restoration:

None

B. Description of corner evidence found and/or method applied in restoring or reestablishing corner:

Established the location of the center of Section 27 by running the line from the N 1/4 corner to the S 1/4 corner and intersecting it with a line extending West from the E 1/4 corner on a mean Azimuth of the E 1/2 of the North line and the E 1/2 of the South line of Section 27. See other side for sketch.



C. Description of monument for corner and accessories established to perpetuate locating the position of the corner:

- Set 30" Harrison Monument With Witness cap on the N & S 1/4 line
- 30.00 feet S00°05'56"W of the Center of Section
- Centerline 24' E-W Gravel Road South 13' more or less
- Centerline 18' N-S Gravel Road West 135' more or less
- Nail & Tag in SW sd P.P. N 86° W 111.14'
- Nail & Tag in SW sd Twin 16"-12" Maple N 43° W 38.23'
- Nail & Tag in SE sd Quad 6-6-4-2 Maple N 40° E 28.90'
- Nail & Tag in S sd P.P. N 88° E 167.94'
- Witness Monument set on E & W 1/4 line 122' West of Center of Section N 76°20'18"W 125.49'

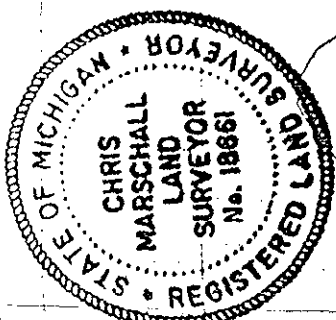
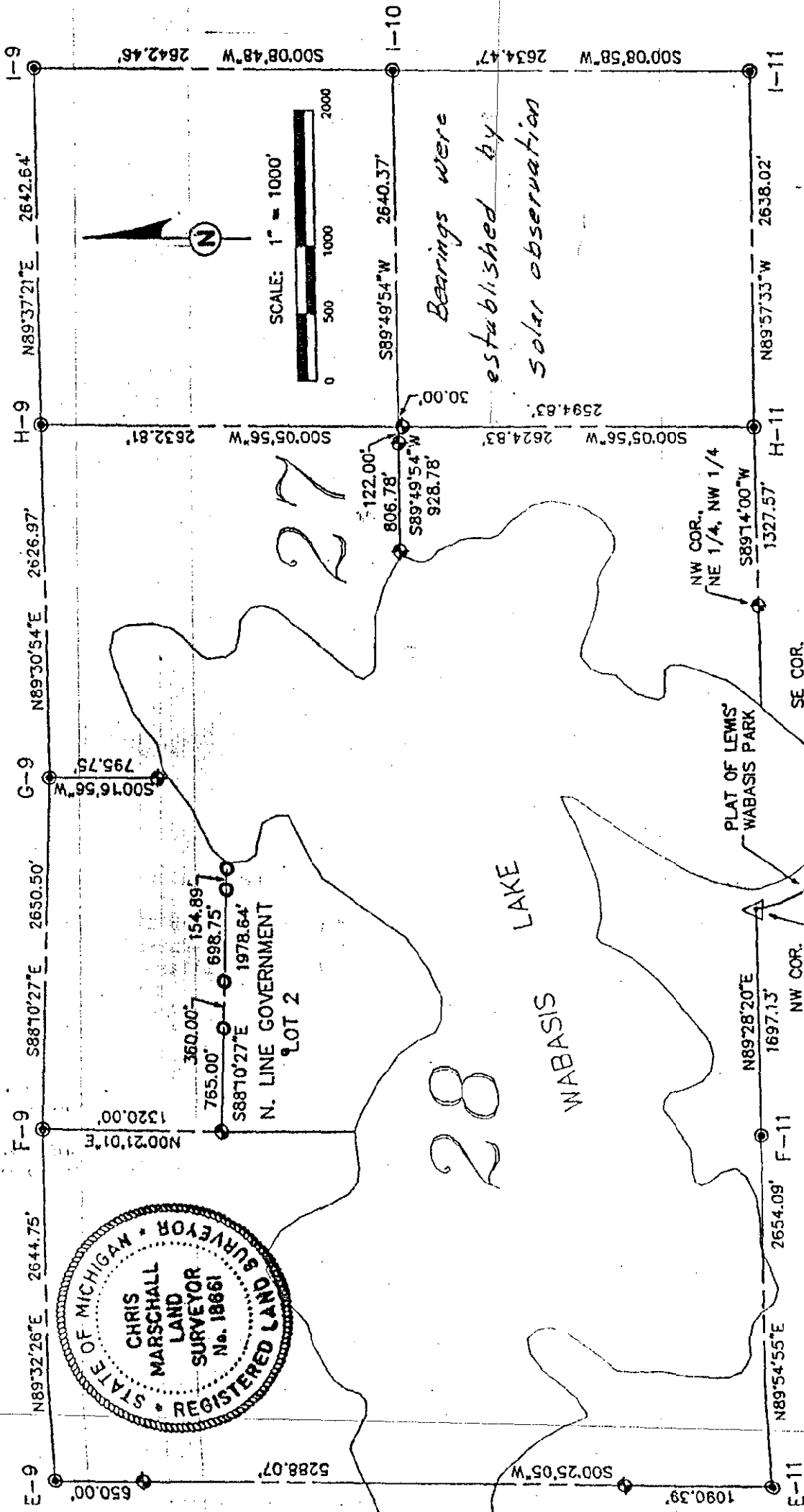
Signed by Chris Marschall

Date June 14, 1993

Surveyor's Michigan License No. 18661

6822B

SECTION 27 AND 28, T9N, R9W,
 OAKFIELD TOWNSHIP, KENT COUNTY
 MICHIGAN



LMN
ENGINEERING CONSULTANTS INC.

- LEGEND
- Monument (Harrison Monument - SET)
 - Government Corner (Harrison Monument - EXISTING)
 - Center of Section (Harrison Monument - SET)
 - Concrete Monument (Plot Corner - EXISTING)
 - Point along line of Section

Chris Marschall a Professional Surveyor in the State of Michigan, HEREBY CERTIFY that I have surveyed the parcel(s) of land described and delineated herein; that said plot is a true representation of the survey as performed by me, and that there are no encroachments other than as shown herein; that said survey was performed and approved in accordance with the requirements of Act 312, P.A. 1977 and that I have fully complied with the requirements of Act 312, P.A. 1977.

6/19/93

4685 CHICAGO DRIVE
 GRANDVILLE, MI 48948
 (616) 331-0110