

SURVEY & REMONUMENTATION

KENT COUNTY REMONUMENTATION

LAND CORNER RECORDATION CERTIFICATE
Filing Requirement of Act 74, Mich. P.A. 1970

For corners in SECTION

KENT COUNTY (County)	Located In:	Corner Code #
1. Public Land Survey	T 9N R 12W	M-4
	T ___ R ___	common with
	T 9N R 11W	A-4
	T ___ R ___	_____
2. Property Controlling in Section	S ___ T ___ R ___	_____
	S ___ T ___ R ___	_____
3. Miscellaneous Property in Sec.	S ___ T ___ R ___	_____
	S ___ T ___ R ___	_____

STATE OF MICHIGAN
COUNTY OF KENT
RECEIVED FOR RECORD
98 MAR -5 AM 8:31
REG. OF DEEDS
Lucy Bond

10498

Register of Deeds Stamp & File Number

4. Lot No. _____, Recorded Plat _____
5. Private Claims _____

I, Kirk Breitels, in a field survey on Jan. 5, 1998 do hereby state that under requirements of P.A. 74, Michigan P.A. of 1970, the corner points mentioned in lines 1 and 2 above were in conformance with regulations and rules therefore as required in the current manual of survey instructions of the United States Department of the Interior, Bureau of Land Management or by a decree of a Court of Law and/or that the corner points mentioned in lines 3, 4 and 5 above were in conformance with the rules of the Michigan Board of Land Surveyors or by a Decree of a Court of Law, established, re-established, monumented, recovered, found as expressed below:

NOTE: Not more than 2 corners, all in the same town and range, may be recorded on this certificate.

	A	B	C	D	E	F	G	H	I	J	K	L	M
1													
2	6	5	4	3	2	1							
3													
4	7	8	9	10	11	12							
5													
6	18	17	16	15	14	13							
7													
8	19	20	21	22	23	24							
9													
10	30	29	28	27	26	25							
11													
12	31	32	33	34	35	36							
13													

P.A. 345 1980 KENT COUNTY

PEER APPROVED 2/19/98

CHAIRMAN *Harry Kuber*

A. Description of original monument and accessories and/or subsequent restoration:

M-4	1837	GLO	Brookfield	Set Post
	1937	Kent Co. Wits		Iron
	1979	LCRC #1313	Nederveld	Iron in Mon. Box
	1983	LCRC #3378	Stadt	Set Kent County Monument in Mon. Box
	1995	LCRC #8331	Breitels	Kent County Monument

The position of this corner was previously approved by the Kent County Remonumentation Peer Group, monumented by Russell E. Stadt on 5-5-83 and was recorded per LCRC#3378.

B. Description of corner evidence found and/or method applied in restoring or reestablishing corner:

M-4 Found Kent County Monument (Harrison) per witnesses from above LCRC as set by Russell E. Stadt in place of the Iron he found over a Stone inside a Mon. Box. Said Iron & Stone checks with Kent Co. Wits. and LCRC #1313. LCRC #3378

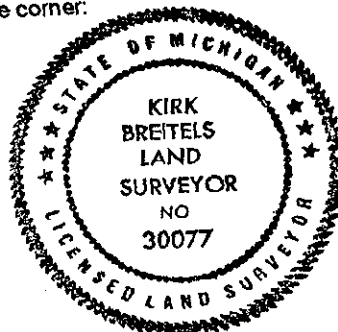
Nail & Remon. tag P. Pole	N85°W 91.00'	Nail & Remon. tag P. Pole	N85°W 91.00'
Nail & Remon. tag 34" Box Elder	N20°W 74.05'	Nail & Remon. tag 18" Tri. Cherry	S60°E 70.76'
Nail & Remon. tag 12" Tri. Cher.	S60°E 70.91'	Nail & Remon. tag P. Pole	N80°W 25.11'
Nail & Remon. tag 12" Maple	S30°E 78.68'	Nail & Remon. tag 24" Oak	S30°E 78.50'

On C/L N-S asph. road & C/L grav. rd. E.
On fence line to West

The selected location is accepted by me and is generally accepted by professional surveyors as the best available evidence of the position of the original corner.

C. Description of monument for corner and accessories established to perpetuate locating the position of the corner:

M-4 Standard Kent County Monument			
Nail & KC Remon. tag S. side P. Pole	N85°W	91.00'	
Nail & KC Remon. tag N. side 18" Tri. Cherry	S60°E	70.76'	
Nail & KC Remon. tag S. side P. Pole	N80°W	25.11'	
Nail & KC Remon. tag SW side 24" Oak	S30°E	78.48'	
Nail & KC Remon. tag S. side Tri. 16" Butternut	N70°E	77.10'	
On C/L asphalt road N-S and East			
On fence line to West			



Signed by *Kirk Breitels*
Surveyor's Michigan License No. 30077

Date 2/19/98