

# LAND CORNER RECORDATION CERTIFICATE

Filing Requirement of Act 74, Mich. PA 1970

Lake (County)	Located In	Corner Code #
1. Public Land Survey	T 19N R 12W	B11
2. Property Controlling in Section	S T R	
3. Miscellaneous Property in Section	S T R	

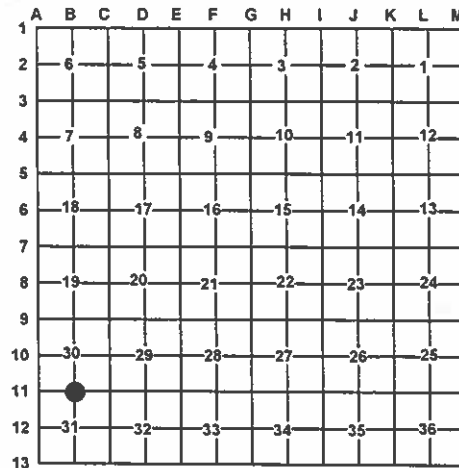
4. Lot No: \_\_\_\_\_ Recorded Plat: \_\_\_\_\_

5. Private Claims: \_\_\_\_\_

I, Craig W. McVean, in a field survey on Mar. 8, 2011 do hereby state that under requirements of PA 74, Michigan PA of 1970, the corner points mentioned in lines 1 and 2 above were in conformance with regulations and rules therefore as required in the current manual of survey instructions of the United States Department of the Interior, Bureau of Land Management or by a decree of a Court of Law and/or that the corner points mentioned in lines 3, 4 and 5 above were in conformance with the rules of the Michigan Board of Land Surveyors or by a Decree of a Court of Law; established, re-established, monumented, recovered, found as expressed below:

**NOTE: Not more than 2 corners, all in the same town and range, may be recorded on this certificate.**

Register of Deeds Stamp & File Number



## A. Description of original monument and accessories and/or subsequent restoration:

B11 – 1838 - GLO – S. Sibley – Set ¼ post

- 1) Pine 20" S65°E 21 L.
- 2) Pine 14" N30°W 56 L.

- 1972 – DNR Project #72-11, C. F. Roser shows computed position, corner was not searched for.

- 2003 – LCRC L. 5, p. 172 – P. N. Johnson - Set ½" capped iron rod #47956 on-line and at prorated GLO distance.
- 3) 8" White Oak N07°E 16.56'
  - 4) 10" B. Oak N88°E 18.15'
  - 5) 8" B. Oak N19°W 19.47'
  - 6) 11" W. Oak (Twin) S55°W 30.70'

## B. Description of corner evidence found and/or method applied in restoring or re-establishing corner:

B11 – ¼ corner common to Sections 30 & 31 - Found ½" x 18" capped iron rod #47965. No GLO evidence present and recent cut in area left only stumps for P. Johnson wits. #3 - #6. ½" x 18" CIR accepted as a faithful and careful reestablishment of the position of the original corner.

## C. Description of monument for corner and accessories established to perpetuate locating the position of the corner:

B11 – Replaced ½" x 18" CIR #47965 with a stamped 4" Aluminum DNR cap on a 1" x 36" galvanized iron pipe.

S34°E 33.47' to set ½" x 18" rebar  
 S42°W 44.11' to set ½" x 18" rebar  
 N18°W 84.90' to set nail & tag in W. side 12" Oak scribed 'XBT'  
 N13°E 74.88' to set nail & Tag in W. side 12" Oak scribed 'XBT'  
 N46°E 113.54' to set nail & tag in E. side 14" Oak scribed 'XBT'  
 Set Blue Carsonite Post 1' North



Signed by:

Craig W. McVean

Date:

10/25/2011

Surveyor's Michigan License No.:

39088