

**SURVEY &
REMONUMENTATION**

LUCE COUNTY REMONUMENTATION CORNER

APR 28 1995

LAND CORNER RECORDATION CERTIFICATE

Filing Requirement of Act 74, Mich. P.A. 1970

COMMISSION

For corners in
Luce

(County)	Located In:	Corner Code #
1. Public Land Survey	T <u>45N</u> R <u>9W</u>	G-6
	T _____ R _____	_____
	T _____ R _____	_____
	T _____ R _____	_____
2. Property Controlling in Section	S _____ T _____ R _____	_____
	S _____ T _____ R _____	_____
3. Miscellaneous Property in Sec.	S _____ T _____ R _____	_____
	S _____ T _____ R _____	_____
4. Lot No. _____, Recorded Plat _____		
5. Private Claims _____		

Filed 1/20 A.D., 1995
 At 12:30 o'clock P.M.
 Liber 2
 File No. page 621
Kathy S. Mahan
 Luce County Reg. of Deeds
 Register of Deeds Stamp & File Number

I, Keith R. Waters, in a field survey on October 12, 1994, do hereby certify that under requirements of P.A. 74, Michigan P.A. of 1970, the corner points mentioned in lines 1 and 2 above were in conformance with regulations and rules therefore as required in the current manual of survey instructions of the United States Department of the Interior, Bureau of Land Management or by a decree of a Court of Law and/or that the corner points mentioned in lines 3, 4 and 5 above were in conformance with the rules of the Michigan Board of Land Surveyors or by a Decree of a Court of Law; established, re-established, monumented, re-monumented, recovered, found as expressed below:

NOTE: Not more than 4 corners, all in the same town and range, may be recorded on this certificate.

A. Description of original monument and accessories and/or subsequent restoration:
G-6 1/4 Corner Common to Sections 15 & 16, T45N, R9W
 Original ties to post: Fir 5, S06°E 21 links
 Fir 4, N47°W 20 links

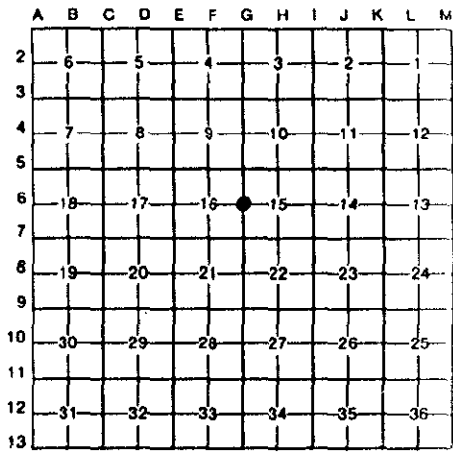
B. Description of corner evidence found and/or method applied in restoring or reestablishing corner:
G-6 (T45N, R9W)

This corner is being perpetuated as part of the Luce County Remonumentation Program. Found a 1 1/2" o.d. iron pipe next to a squared wood post. Pipe is 2643.80 feet from section corner to the north, 2628.42 feet from section corner to the south, and is 3.4 feet east of a straight line between said section corners. Accepted corner as found.

C. Description of monument for corner and accessories established to perpetuate locating the position of the corner:

G-6 (T45N, R9W)
 Corner is a 1 1/2" iron pipe next to a squared wood post. Witnesses:

8" Cedar, S50°W 21.42'	Note: Distances are to a nail and tag in the side of the tree. Trees are blazed and painted. Bearings are compass bearings corrected for declination.
7" Cedar, N42°W 18.68'	
7" Cedar, N18°E 14.48'	
8" Cedar, S55°E 11.03'	



Signed by Keith R. Waters Date 12-23-94
 Surveyor's Michigan License No. 33142