

MICHIGAN
DEPARTMENT OF CONSERVATION
FORESTRY DIVISION

LAND CORNER RECORD

T. 42N N.R. 6-7W

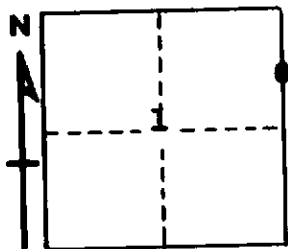
Mackinac COUNTY

DESCRIPTION OF CORNER North 1/16 Corner bet. Secs. 1-6

CORNER MONUMENT 1" pipe with 4" aluminum cap, buried in west wheel track of road.

DATE MONUMENT PLACED AND WITNESSED 10-29-64

WITNESSES TO CORNER..... 16" W. Pine stump (N 1/16 BT) N41°E 20.5'



16" W. Pine stump (BT) N46°W 60.2'

AND

CIRCLE CORNER REGISTERED

DESCRIPTION IN DETAIL AS TO HOW CORNER WAS LOCATED AND IDENTIFIED OR RESTORED.

This corner established on line and midway between Sec. Cor. to north and $\frac{1}{4}$ Cor. to south.

SURVEYOR'S SEAL

SIGNED Billy D. Buckler DATE 1-21-71
REGISTERED LAND SURVEYOR