

MICHIGAN
DEPARTMENT OF CONSERVATION
FORESTRY DIVISION

LAND CORNER RECORD

T. 43 N.R. 6 & 7 W

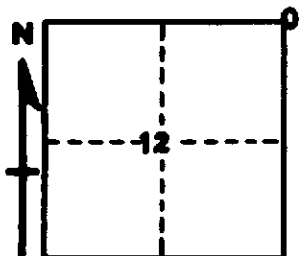
Mackinac COUNTY

DESCRIPTION OF CORNER Section Corner for T43N 1/6 T43N R7W12/7 R6W

CORNER MONUMENT 1" Iron Pipe with 4" Aluminum Cap

DATE MONUMENT PLACED AND WITNESSED 4/27/66, Frank Bray with J. Price

WITNESSES TO CORNER..... 18" W. Pine (S1 NBT) N 61° W, 16 Links



8" Cedar (S7)(NBT) S12°E, 03 1/2 Links

AND

CIRCLE CORNER REGISTERED

DESCRIPTION IN DETAIL AS TO HOW CORNER WAS LOCATED AND IDENTIFIED OR RESTORED.

This corner was replaced at down sg'd. post set by Marcus Schaff Registered Land Surveyor. Overgrowth of original BT (Spruce 8" N 36° E 13 Links) with Iron marks still visible but in poor condition.

SURVEYOR'S SEAL

SIGNED

Frank J. Bray

REGISTERED LAND SURVEYOR

DATE

7/19/67