

172

LAND CORNER RECORDATION CERTIFICATE

Filing Requirement of Act 74, Mich. P.A. 1970

For corners in Mackinac

(County)

Located In:

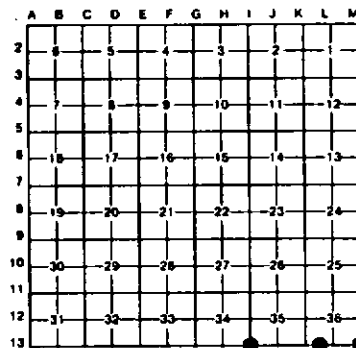
Corner Code #

T43N R7W 41170 41174 41174 T42N R7W 43209 43210 43211

Table with 3 columns: Item, Location (T/R, 43N/7W, 36/43N/7W), and Corner Code # (113, 15).

Register of Deeds Stamp & File Number

- 4. Lot No. Recorded Plat
5. Private Claims



I, Stephan J. Szyszkoski, in a field survey on September 17, 1992, do hereby certify that under requirements of P.A. 74, Michigan P.A. of 1970, the corner points mentioned in lines 1 and 2 above were in conformance with regulations and rules therefore as required in the current manual of survey instructions of the United States Department of the Interior, Bureau of Land Management or by a decree of a Court of Law and/or that the corner points mentioned in lines 3, 4 and 5 above were in conformance with the rules of the Michigan Board of Land Surveyors or by a Decree of a Court of Law, established, re-established, monumented, re-monumented, recovered, found as expressed below.

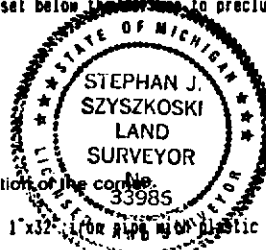
NOTE: Not more than 4 corners, all in the same town and range, may be recorded on this certificate.

A. Description of original monument and accessories and/or subsequent restoration:

(113) Section corner common to Sections 34-35, T43N-R7W. Corner previously recorded by David B. Babbitt, RLS, in 1982, as monumented by a D.N.R. monument with the following accessories: 16" R. Pine S38E 80.2', 10" R. Pine S06E 66.8', 10" R. Pine S33W 59.8'.
(113) Township corner common to T42-43N, R6-7W. Corner previously recorded by Billy D. Buckler as monumented with a 1" pipe and 4" brass cap in 1962 with the following accessories: 8" W. Spruce (S36 NBT) NS0W 60 links, 3" W. Pine (NBT) S50W 53 links.
(15) West 1/16 corner between Sections 36 T43N-R7W, and 1 T42N-R7W. Corner previously recorded by Frank J. Bray as monumented by a 1" iron pipe with a 4" aluminum cap in 1966, with the following accessories: 10" Y. Pine (N1/16 BT) S66W, 36.5 links, 6" Y. Pine (N1/16 BT) S43E 77.5 links.

B. Description of corner evidence found and/or method applied in restoring or reestablishing corner:

(113) Found corner monument and accessories as recorded. Replaced the monument with a 1"x32" iron pipe capped with a plastic cap stamped "Mich DNR LS 33986" driven below the ground surface to preclude disturbance by proposed road improvements. Re-measured and re-marked record NBTs and marked another BT as shown below.
(113) Found a 1" pipe with a 4" brass cap, appropriately stamped. Buckler's NBTs have both been cut. marked 3 new bearing trees as described below.
(15) Recovered a 1" iron pipe with a 4" aluminum cap at record bearing and distance from the BTs noted above. Removed the monument and placed, at it's position, a 1"x32" iron pipe capped with a plastic cap stamped "Mich DNR LS 33986" set below the surface to preclude disturbance by proposed road construction. Marked two new bearing trees as described below.



C. Description of monument for corner and accessories established to perpetuate locating the position of the corner:

(113) 1" pipe with plastic RLS cap. Placed measuring nails and tags in the record NBTs as follows: 16" R. Pine S38E 80.4', 10" R. Pine S06E 67.3', 10" R. Pine S33W 59.95'. Blazed, scribed and set measuring nail in the following new BT: 6" J. Pine N34W 37.6'. Found the monumented closing corner between 2&3, T42N-R7W 112.72' West.
(113) Found a 1" pipe with 4" brass cap. Blazed, scribed, and set measuring nails in the following new bearing trees: 2" Maple N74E 87.7', 6" Aspen S25E 77.0', 8" Spruce N55W 44.7'. A sign post bears S68E, 18.65' from the corner.
(15) Set a 1"x32" iron pipe with plastic RLS cap. Blazed, scribed, and set measuring nails with tags in the following new bearing trees: 6" R. Pine S75E 25.7', 8" R. Pine S51W 22.05'. Set measuring nails with tags in the record BTs: 16" Y. Pine S66W 24.8', 12" Y. Pine S43E 51.4'.

Signed by Stephan J. Szyszkoski

Date 1-27-93

Surveyor's Michigan License No. 33986