

MICHIGAN
DEPARTMENT OF CONSERVATION
FORESTRY DIVISION

LAND CORNER RECORD

T. 43 N.R. 8W

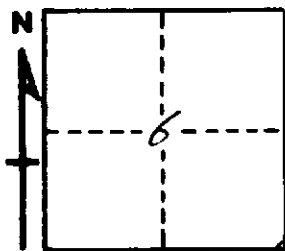
Mackinac COUNTY

DESCRIPTION OF CORNER Sec. Corner common to Secs. 5-6-7-8

CORNER MONUMENT 1" Pipe with 4" Aluminum Cap

DATE MONUMENT PLACED AND WITNESSED 6-24-68

WITNESSES TO CORNER..... 8" W. Birch (S7 NBT) S35°W 18.5'



9" Balsam (S6 NBT) N12°W 22.2'

AND

DESCRIPTION IN DETAIL AS TO HOW CORNER WAS LOCATED AND IDENTIFIED OR RESTORED.

This corner re-established at record distance from $\frac{1}{4}$ corner to west, $\frac{1}{2}$ mile and fence corner to north, $\frac{1}{2}$ mile.
Distance checks with corner 1 mile east.
Found no original evidence, but did find a white stake 30' north of corner.
(Believe this to be a plot reference post by Kimberly-Clark Corp.)

SURVEYOR'S SEAL

SIGNED Billy D. Buckler
Billy D. Buckler, R.L.S. DATE 10-8-68
REGISTERED LAND SURVEYOR