

SURVEY & REMONUMENTATION

FEB 27 1997

COMMISSION

LAND CORNER RECORDATION CERTIFICATE Filing Requirement of Act 74, Mich. P.A. 1970

For corners in

Macomb
(County)

Located In:

Shelby Twp.

Corner Code #

1. Public Land Survey

T 3N. R 12E.

F-5

2. Property Controlling
in Section

S T R

3. Miscellaneous
Property in Sec.

S T R

ACCEPTED BY THE MACOMB COUNTY SURVEY PEER
GROUP AS THE OFFICIAL CORNER UNDER MICHIGAN
PUBLIC ACT 345 OF 1990 AT A MEETING HELD
ON 7-23-96

WILLIAM E. SODERBERG, P.S., CHAIRMAN

Register of Deeds Stamp & File Number

4. Lot No. , Recorded Plat

5. Private Claims

I, Jeffrey A. Wright, in a field survey on June 20, 19 96 do hereby state that under requirements of P.A. 74, Michigan P.A. of 1970, the corner points mentioned in lines 1 and 2 above were in conformance with regulations and rules therefore as required in the current manual of survey instructions of the United States Department of the Interior, Bureau of Land Management or by a decree of a Court of Law and/or that the corner points mentioned in lines 3, 4 and 5 above were in conformance with the rules of the Michigan Board of Land Surveyors or by a Decree of a Court of Law; established, re-established, monumented, recovered, found as expressed below.

NOTE: Not more than 2 corners, all in the same town and range, may be recorded on this certificate.

C0438545 LIBER:07245 PAGE:406 08:59A 11/14/1996
CARMELLA SABAUGH-MACOMB COUNTY, MI REG/DEEDS

	A	B	C	D	E	F	G	H	I	J	K	L	M
1													
2		6		5		4		3		2		1	
3													
4		7		8		9		10		11		12	
5													
6		18		17		16		15		14		13	
7													
8		19		20		21		22		23		24	
9													
10		30		29		28		27		26		25	
11													
12		31		32		33		34		35		36	
13													

A. Description of original monument and accessories and/or subsequent restoration:

Date	Surveyor	Number	Type	L.	P.	Monument Box
1817	Wampler		Set Post	GLO Records		No
1978	Kobs	14097	F. PK Nail	3021	209	No
1988	Avey	15396	F. PK Nail	Unrecorded		No
1991	Avey	30076	Set RR Spike	5290	285	No
Unknown	MCRC		1" Iron	Unrecorded		No

B. Description of corner evidence found and/or method applied in restoring or reestablishing corner:

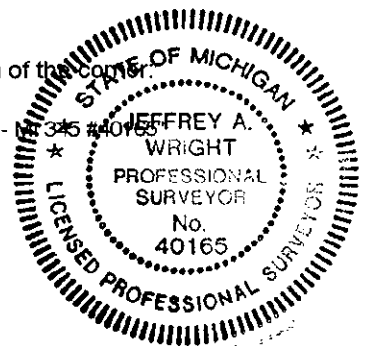
F. RR Spike in centerline of asphalt road

Fits call in:	Location supported by corners in:	F-5 - E-5 = 2633.94'	GLO
L. 5290, P. 285	F. RR Spike	F-5 - G-5 = 2652.73'	2640' / 40 chains
	Shelbydale Gardens		2640' / 40 chains
	Luann Sub. #1		
	S/P of Disco		
	Brookside Est. Sub. #5		

C. Description of monument for corner and accessories established to perpetuate locating the position of the corner:

Replaced RR Spike with 3/4" Bar in new monument box with aluminum cap stamped "Macomb County Monument - 345 #40165"

AZ 79° 137.90' to chiseled "+" in top of bridge rail
AZ 102° 137.71' to chiseled "+" in top of bridge rail
AZ 242° 56.17' to centerline top hydrant
AZ 299° 97.96' to Mag nail with remonumentation tag NE side 24" Maple
AZ 284° 140.11' to Mag nail with remonumentation tag NE side 20" Maple



The selected location is accepted by me and is generally accepted by Professional Surveyor's as the best available evidence of the position by the original corner.

Signed by

Jeffrey A. Wright

Date:

16 OCTOBER 1996

Surveyor's Michigan License No. 40165