

JAN 24 1996

LAND CORNER RECORDATION CERTIFICATE
Filing Requirement of Act 74, Mich. P.A. 1970

COMMISSION

For corners in
Manistee

Located In: Corner Code #

Table with columns for corner types (T, S), ranges (21N, 13W), and codes (A-6, M-6, 18-15)

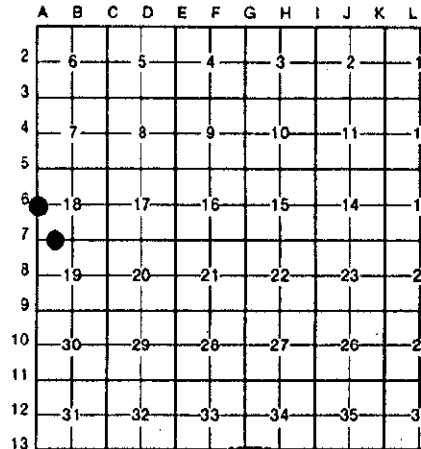
REGISTER'S OFFICE
MANISTEE COUNTY
#93-327 AT 3:14 p.m.
MAY 12 1993

Penny A. Pepera
REGISTER OF DEEDS

Register of Deeds Stamp & File Number

- 4. Lot No.
5. Private Claims

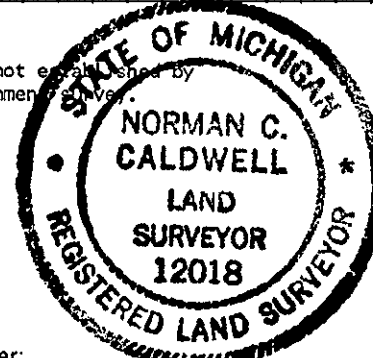
I, Norman C. Caldwell, in a field survey on September 19 92, do hereby certify that under requirements of P.A. 74, Michigan P.A. of 1970, the corner points mentioned in lines 1 and 2 above were in conformance with regulations and rules therefor...



NOTE: Not more than 4 corners, all in the same town and range, may be recorded on this certificate.

A. Description of original monument and accessories and/or subsequent restoration:

A-6 Post placed by John Brink, Sept. 1837
18-15 This position not established by original government survey



B. Description of corner evidence found and/or method applied in restoring or reestablishing corner:

A-6 1/4 common to Sec. 18, T21N-R13W & Sec. 13, T21N-R14W
County Surveyors record S. H. Baker - date unknown
No Monument Given
N37 1/2 E 78.7' 8" Water Elm
S58 W 46 1/2' 14" Hemlock Stump
County Surveyors copy of minutes of Survey Theodore Norlin in June 1922
Fnd. old stake
S14 W 55.3' 18" B. Oak
S68 E 46.0' 15" Maple
18-15 W 1/16 cor., Sec. 18 & 19, T21N-R13W
County Surveyors Record Fargo Eng. Co. December 1900
Monument - Gas Pipe
S29 1/2 W 26.00' 10" Tamarak
S78 E 28.00' 8" Tamarak
County Surveyors copy of minutes of Survey Theodore Norlin in June 1922
Monument - stake
S29 W 26.00' 10" Tamarak
S78 E 28.00' 8" Tamarak
Unrecorded survey by K. Ross in 1973
Monument - 1" Pipe
East 25.76' 12" W. Pine
SW 14.20' 10" W. Pine
NW 29.78' 12" W. Pine
(Fnd. in U.S.F.S. Land Corner Record)

C. Description of monument for corner and accessories established to perpetuate locating the position of the corner:

A-6 1/4 common to Sec. 18, T21N-R13W & Sec. 13, T21N-R14W
At prop. distance, found
No evidence of record monument, placed 2" iron pipe with brass cap and is accepted as a careful and faithful reestablishment of the position of the original corner.
S42 W 52.33' 15" W. Pine
N55 W 25.57' 18" W. Pine
S52 E 46.28' 18" W. Pine
N38 E 74.85' 20" W. Pine
N07 E 330.82' 5 1/4" Pipe #12018 5" conc. mon. @ North 1.0' Carsonite Witness Post I.R. BOUNDARY
179,96 NCC
18-15 W 1/16 cor., Sec. 18 & 19, T21N-R13W
Fnd. 1 1/2" diam. iron pipe, placed 5/8" x 1/2" reord w/alum. cap inside existing iron pipe is 1.2" above conc. block. This position not established by original government survey, monument is accepted as a careful and faithful determination of the position of the corner.
S10 E 33.15' 8" W. Pine
S80 W 53.93' 9" W. Pine
N30 W 29.53' 5" W. Pine
N81 E 22.01' 7" W. Pine
West 1.0' Carsonite Witness Post

Signed by Norman C. Caldwell
Surveyor's Michigan License No. 12018

Date 12 JAN 93
FORM APPROVED BY MICHIGAN STATE BOARD OF LAND SURVEYORS, JAN. 28, 1988
REVISED MAY 14, 1993
REVISED JAN. 1995

A-6 M-6 ratified by the Manistee County Surveyors Group pursuant to P.A. 123 of 1915, as amended by P.A. 345 of 1990, as amended by P.A. 1993