

LAND CORNER RECORDATION CERTIFICATE
Filing Requirement of Act 74, Mich. P.A. 1970

For corners in
MICHIGAN

(County)

Located In:

Corner Code ##

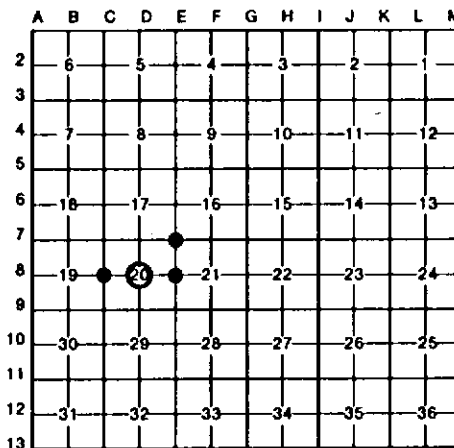
1. Public Land Survey	T	<u>16</u> N	R	<u>9</u> W	<u>C-8</u>
	T		R		<u>D-8</u>
	T		R		<u>E-7</u>
	T		R		<u>E-8</u>
2. Property Controlling in Section	S		T	R	
	S		T	R	
3. Miscellaneous Property in Sec.	S		T	R	
	S		T	R	

Register of Deeds Stamp & File Number

4. Lot No. _____, Recorded Plat _____
 5. Private Claims _____

I, CARL F. ROBER, in a field survey on JANUARY 15, 19 88, do hereby certify that under requirements of P.A. 74, Michigan P.A. of 1970, the corner points mentioned in lines 1 and 2 above were in conformance with regulations and rules therefore as required in the current manual of survey instructions of the United States Department of the Interior, Bureau of Land Management or by a decree of a Court of Law and/or that the corner points mentioned in lines 3, 4 and 5 above were in conformance with the rules of the Michigan Board of Land Surveyors or by a Decree of a Court of Law; established, re-established, monumented, re-monumented, recovered, found as expressed below:

NOTE: Not more than 4 corners, all in the same town and range, may be recorded on this certificate.



A. Description of original monument and accessories and/or subsequent restoration:

C-8	D-8	E-7	E-8
RECOVERED OLD 1/2" IRON ROD IN 3" TILE FOR W 1/4, S-20, BURIED 1/2' IN OPEN FIELD. COR IS IN LINE W/ABANDONED TWP. RD. S'LY AND ON LINE OF APPROX. SPLIT OF OLD 60'±6' R/W FN. REMAINS S'LY (APPROX 60' S OF COR IN WOODS).	RECOVERED OLD PIPE FOR CTR. S-20. COR IS IN LINE W/FN. S'LY AND IN APPROX. CTR. E-W GR. RD. COR IS IN LINE WITH 1/8 FN. COR. TO S AND 1/8 FN. COR EVIDENCE TO N. COR IS VERY CLOSE TO A STRAIGHT LINE BTWN E AND W 1/4 COR.	ACCEPTED 3/4" IRON ROD IN MON. BOX FOR NE COR S-20. COR IS IN APPROX. CTR. OF BIT. RDS., E, S, W AND GR. RD. N.	ACCEPTED FD. 1/2" IRON ROD FOR E 1/4 SEC 20. COR IS BURIED 4" IN N-S BIT RD SURFACE. COR IS IN LINE W/GOOD FN. E'LY AND IN LINE W/CTR. DIRT RD. LOOKING W'LY.

C. Description of monument for corner and accessories established to perpetuate locating the position of the corner:

C-8	D-8	E-7	E-8
FD. 1/2" IRON ROD IN 3" VIT TILE, ADDED CED. POST W/LOC. TAG.	FD. OLD 1 1/2" PIPE.	FD. 3/4" IRON ROD IN MON. BOX.	FD. 1/2" IRON ROD.
4" ASH S 20°E 57.43'	3" ELM N 45°E 29.40'	T POLE N 35°W 43.56'	POWER POLE N 35°W 101.43'
13" ASH S 05°W 47.53'	POWER POLE S 10°W 36.65'	P POLE N 45°E 46.25'	42" MAPLE N 60°E 34.87'
8" APPLE	14" MAPLE S 30°W 32.51'	P POLE S 70°E 71.01'	43" MAPLE S 75°W 126.96'
IN CLUMP 4 S 25°W 41.94'	3" ASH N 75°W 78.43'	NW COR. STORE PORCH FOUNDATION S 25°E 62.5'	CTR. NS BIT. RD. DUE W 1'
4" ASH S 65°W 64.55'			

Signed by Carl F. Rober 12-12-90 Date _____

Surveyor's Michigan License No. 12028

