

LAND CORNER RECORDATION CERTIFICATE

Filing Requirement of Act 74, Mich. PA 1970

For Corners In:

Midland
(County)

Located In

Corner Code #

1. Public Land Survey	T	13N	R	2W	K10
	T		R		
2. Property Controlling in Section	S	T	R		
	S	T	R		
3. Miscellaneous Property in Section	S	T	R		
	S	T	R		

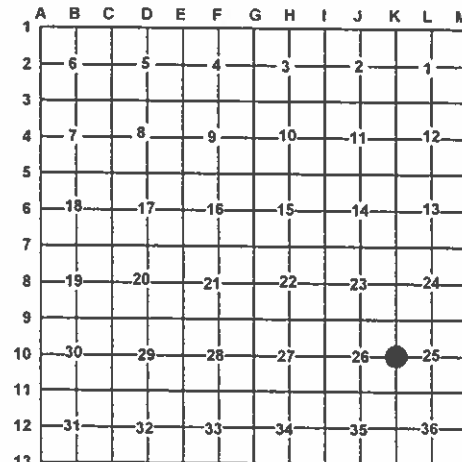
4. Lot No: _____ Recorded Plat: _____

5. Private Claims: _____

I, Craig W. McVean, in a field survey on July 21, 2010 do hereby state that under requirements of PA 74, Michigan PA of 1970, the corner points mentioned in lines 1 and 2 above were in conformance with regulations and rules therefore as required in the current manual of survey instructions of the United States Department of the Interior, Bureau of Land Management or by a decree of a Court of Law and/or that the corner points mentioned in lines 3, 4 and 5 above were in conformance with the rules of the Michigan Board of Land Surveyors or by a Decree of a Court of Law; established, re-established, monumented, recovered, found as expressed below:

NOTE: Not more than 2 corners, all in the same town and range, may be recorded on this certificate.

Register of Deeds Stamp & File Number



A. Description of original monument and accessories and/or subsequent restoration:

K10 – 1852 – GLO – Resurvey – A. Burt

Old ¼ corner. Set Post

1) W. Pine 10" S50°W 41 L.

2) Aspen 8" N75°E 7 L. - Old Bearing

N0°23'W 40.24' to 'K9'

S0°21'E 40.20' to 'K11'

- 1904 – CSR – Pg. 35 – F. J. Gibbs

Set post at average distance on True Line. 40.18 ch. N & S.

- 1999 – LCRC #884 – T. E. Bebee – Corner set by D. B. Whittier, PS #10070, Oct. 20, 1975 – "Set ¾" iron pipe."
Found ¾" iron pipe flush with Asphalt.
3) Corner post of chain link fence West 30.7';
4) Face of 4" dia. steel post N75°W 39.3';
5) Face of 24" Maple S75°E 38.3';
6) Base of 4" x 4" Fence corner post N85°E 30.6'

B. Description of corner evidence found and/or method applied in restoring or re-establishing corner:

K10 – ¼ Corner common to Sec. 25 & 26, T13N, R2W – Fd. ¾" iron pipe flush with N-S Bit. Rd. ~ 2'± E. of centerline. Cyclone fence to the West is 2'± N. Woven wire fence to the East is 5'± North. Measured Grid bearing and distance of N0°10'31"W 2654.04' (2655.84' – GLO, 2651.88' – FJG) to 'K9' and S0°10'23"E 2653.96' (2653.2' – GLO, 2651.88' – FJG, 2653.82' – DBW) to 'K11'. Witnesses #1, 2, 4 & 6 are gone. It is possible that an excavation may yield some other evidence at this corner location but we did not attempt this. ¾" iron pipe accepted as the best available evidence of the position of the original corner.

C. Description of monument for corner and accessories established to perpetuate locating the position of the corner:

K10 – ¾" I.D. iron pipe flush with Bit. Road.

N13°E 118.11' to set N & T in W. side 18" W. Pine

S59°E 38.74' to set N & T in SW side 30" Silver Maple (#5)

N83°W 30.76' to chiseled 'X' in N. side Cyclone Steel Fence Post (#3)

N50°W 53.50' to set N & T in NE side 18" R. Pine



Signed by:

Craig W. McVean

Date:

11/18/2010

Surveyor's Michigan License No.:

39088