

MAY 07 1997

COMMISSION

MONTCALM COUNTY REMONUMENTATION PROGRAM

LAND CORNER RECORDATION CERTIFICATE

Filing Requirement of Act 74, Mich. P.A. 1970

STATE OF MICHIGAN
MONTCALM COUNTY
RECORDED

12/27/1996 2:08:51 PM

VIRGINIA L. KNEPPER
REGISTER OF DEEDS

Register of Deeds Stamp & File Number

For corners in
Montcalm
(County)

Located In:
Richland Township

Corner Code #
K-7

1. Public Land Survey Sec 13 T 12 N R 5W
14, 23 & T 12 N R 5W
24 T 12 N R 5W
T 12 N R 5W

2. Property Controlling S 12 T 12 N R 5W
in Section S 12 T 12 N R 5W

3. Miscellaneous S 12 T 12 N R 5W
Property in Sec. S 12 T 12 N R 5W

4. Lot No. , Recorded Plat

5. Private Claims

	A	B	C	D	E	F	G	H	I	J	K	L
2	6	5	4	3	2	1						
3												
4	7	8	9	10	11	12						
5												
6	18	17	16	15	14	13						
7												
8	19	20	21	22	23	24						
9												
10	30	29	28	27	26	25						
11												
12	31	32	33	34	35	36						
13												

I, William Tingley, a field survey on November 7, 1995, do hereby certify that under requirements of P.A. 74, Michigan P.A. of 1970, the corner points mentioned in lines 1 and 2 above were in conformance with regulations and rules therefore as required in the current manual of survey instructions of the United States Department of the Interior, Bureau of Land Management or by a decree of a Court of Law and/or that the corner points mentioned in lines 3, 4 and 5 above were in conformance with the rules of the Michigan Board of Land Surveyors or by a Decree of a Court of Law; established, re-established, monumented, re-monumented, recovered, found as expressed below:

NOTE: Not more than 4 corners, all in the same town and range, may be recorded on this certificate.

A. Description of original monument and accessories and/or subsequent restoration:

1838, Enoch Hammell, Deputy Surveyor

Beech 10" for Corner Sections 13, 14, 23 and 24

1887, H. Caukin, County Surveyor, Liber 1, Page 411

Found stake, oldest settlers knew of no other point claimed as corner. New Bearing Trees:

Pine Stump 30" N14-1/2°W 66 links

Pine Stump 20" S70°E 62 links

Stone

1887, H. Caukin, Old Field Book 12-5, Page 70

Same as Liber 1, Page 411 and Corner.

A brittle sandstone 12" x 15" x 15" lying on its side over it. And additional note: on top of it stone 9" x 8" x 4"

1890, E. Jones, County Surveyor

Survey of section 13, does not describe monument. Liber 2, Page 3, Record of Minutes of Survey

R.D. McNutt, County Surveyor, card file records

Same data as Caukin above

1978, P. Lapham #9433, LCRC, Liber 1, Page 430

Found 3/4" pipe in monument box

Power Pole N45°W 44.04 feet

Telephone Riser S45°W 51.60 feet

Monument S25°W 74.38 feet

Monument S65°W 74.38 feet

1978, F. Spicer #7877, Survey Liber 517, Page 104

Same as LCRC, Liber 1, Page 430

1982, C. Fricke #21761, Survey, Liber 553, Page 296

Same as LCRC Liber 1 Page 430

1990, W. Tingley #30104, LCRC, Liber 2, Page 355

Same as LCRC, Liber 1 page 430

1994, W. Tingley Survey #94247

Found 1" Iron

B. Description of corner evidence found and/or method applied in restoring or reestablishing corner:

Found 3/4" Iron Pipe - no Monument Box - 0.4 feet deep - 0.8 feet top soil below sandy subsoil; dug 3.5 feet deep below pipe found; no trace of stake or other monument. Found same bearing objects as LCRC, Liber 1, Page 430

C. Description of monument for corner and accessories established to perpetuate locating the position of the corner:

Set Remonumentation Monument over 3/4" Pipe

Power Pole N45°W 44.04 feet

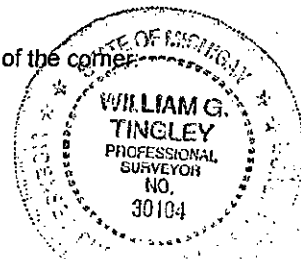
Telephone Riser S45°W 51.60 feet

4" Concrete Monument with 1/2" Rerod (flush) to ground S25°W 74.38 feet

4" Concrete Monument with 1/2" Redor (flush) to ground S65°W 74.38 feet

William Tingley, P.S., Chairman

ACCEPTED BY THE MONTCALM COUNTY SURVEY PEER GROUP AS THE OFFICIAL CORNER UNDER MICHIGAN PUBLIC ACT 345 OF 1990 AT MEETING HELD 9/24/96



This corner is accepted as a careful and faithful perpetuation of the position of the original corner.

Signed by William Tingley Date 9/24, 1996

Surveyor's Michigan License No. 20104