

✓
STATE OF MICHIGAN
DEPARTMENT
OF
NATURAL RESOURCES
LAND CORNER RECORD

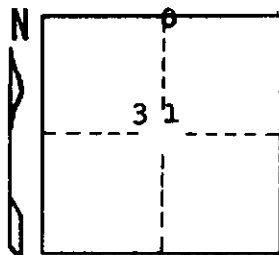
Marquette COUNTY
T 43 N R 24 W

DESCRIPTION OF CORNER 1/4 corner for sections ³⁰31

CORNER MONUMENT 1" iron pipe with 4" aluminum cap

DATE MONUMENT PLACED AND WITNESSED 9/12/69, F. J. Bray

WITNESSES TO CORNER..... 7" Cedar (1/4 S) (NBT) N 15° E, 16 1/2 links



8" Cedar (1/4 S) (NBT) S 52° E, 22 links

AND

CIRCLE CORNER REGISTERED

DESCRIPTION IN DETAIL AS TO HOW CORNER WAS LOCATED AND IDENTIFIED OR RESTORED.

This corner was placed on line and the single proportioned measurement between section corners to east and to west. Blazed and signature trees near. No original evidence found.

SURVEYOR'S SEAL

DISTRIBUTION:

SIGNED

Frank J. Bray
REGISTERED LAND SURVEYOR
Frank J. Bray

DATE 10/3/69

County Courthouse
Area Forester (Regions I & II)
District or Region Surveyor
Forestry Div., Lansing

R 4047
Rev. 10/68