

LAND CORNER RECORDATION CERTIFICATE
Filing Requirement of Act 74, Mich. P.A. 1970

For corners in

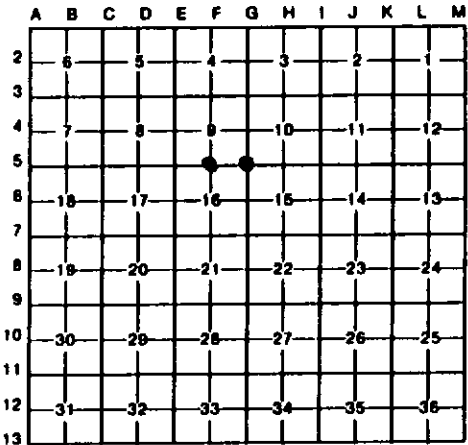
Menominee (County)	Located In:	Corner Code //
1. Public Land Survey	T 35N R 28W	F-5, G-5
	T R	
	T R	
	T R	
2. Property Controlling In Section	S T R	
	S T R	
3. Miscellaneous Property in Sec.	S T R	
	S T R	

Register of Deeds Stamp & File Number

4. Lot No. _____, Recorded Plat _____
5. Private Claims _____

I, Paul R. Bressette in a field survey on October 26, 1993, do hereby certify that under requirements of P.A. 74, Michigan P.A. of 1970, the corner points mentioned in lines 1 and 2 above were in conformance with regulations and rules therefore as required in the current manual of survey instructions of the United States Department of the Interior, Bureau of Land Management or by a decree of a Court of Law and/or that the corner points mentioned in lines 3, 4 and 5 above were in conformance with the rules of the Michigan Board of Land Surveyors or by a Decree of a Court of Law; established, re-established, monumented, re-monumented, recovered, found as expressed below:

NOTE: Not more than 4 corners, all in the same town and range, may be recorded on this certificate.



A. Description of original monument and accessories and/or subsequent restoration:

- 5 Quarter Corner common to Sections 9 and 16. 1852: Francis Coleman, D.S., set wood post witnessed by: W. Pine 30 N34E 28 links; Cedar 8 S48W 30 links. 1854: William Burt, Examiner of Surveys found Hemlock post witnessed by W. Pine 30 N35E 27 links; Cedar 7 S47W 30 links.
- 5 Section Corner common to Sections 9, 10, 15 and 16. 1852: Francis Coleman, D.S., set wood post witnessed by: Tamarack 12 N48E 30 links, W. Birch 12 S20W 14 links. 1854: William Burt, Examiner of Surveys, found Cedar post witnessed by Y. Birch 10 S20W 19 links, Tamarack 10 N45E 29 links.

B. Description of corner evidence found and/or method applied in restoring or reestablishing corner:

- F-5 Corner position restored from W. Pine stump and traces of hemlock wood at proper bearing and distance. Distance east to enter swamp call measures 420 feet (GLO - Burt 7 ch., Coleman 6.5 ch.). Found burnt cedar stub 26 feet east of marsh edge (GLO - 0.51 ch.) measures 567 feet west of monument (GLO- Burt 8.32 ch., Coleman 8.99 ch.). The monument falls 45 feet north of east-west fence, which according to Ken Rickaby, a longtime resident, was built 35 feet south of line to allow for a road. Burt shows a kink at the quarter corner in his retracement. The fence runs straight for the whole mile.
- G-5 Corner position restored from old tamarack stump showing faint traces of axe marks at bearing and distance given by Burt in his examination. This position places the corner 39 feet north of an old fenceline west and 17 feet east of and fenceline south. According to long-time resident Ken Rickaby the east-west fence was built 35 feet south of the line to allow room for a road.

C. Description of monument for corner and accessories established to perpetuate locating the position of the corner:

F-5 DNR Mon.			G-5 DNR Mon.		
6" Spruce	N66E	43.1'	6" Cedar	N14E	28.35'
8" Spruce	S14E	43.2'	8" Cedar	N66E	43.8'
14" Spruce	S48W	24.75'	5" W. Ash	S40E	24.6'
5" Aspen	N31W	17.3'	6" Spruce	S11W	14.0'



Paul R. Bressette
Signed by

Date December 21, 1993