

LAND CORNER RECORDATION CERTIFICATE
Filing Requirement of Act 74, Mich. PA 1970

For Corners In: Montmorency (County)	Located In	Corner Code #
1. Public Land Survey	T _____ R _____	_____
	T _____ R _____	_____
2. Property Controlling in Section	S 22 T 31N R 3E	7
	S 22 T 31N R 3E	2
3. Miscellaneous Property in Section	S _____ T _____ R _____	_____
	S _____ T _____ R _____	_____

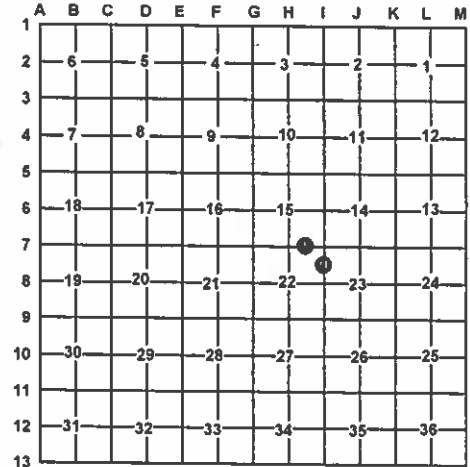
Register of Deeds Stamp & File Number

4. Lot No: _____ Recorded Plat: _____

5. Private Claims: _____

I, Carl T. Kiiskila, in a field survey on July 19, 2005 do hereby state that under requirements of PA 74, Michigan PA of 1970, the corner points mentioned in lines 1 and 2 above were in conformance with regulations and rules therefore as required in the current manual of survey instructions of the United States Department of the Interior, Bureau of Land Management or by a decree of a Court of Law and/or that the corner points mentioned in lines 3, 4 and 5 above were in conformance with the rules of the Michigan Board of Land Surveyors or by a Decree of a Court of Law; established, re-established, monumented, recovered, found as expressed below:

NOTE: Not more than 2 corners, all in the same town and range, may be recorded on this certificate.



A. Description of original monument and accessories and/or subsequent restoration:

7- This corner position was not established during the original government survey.

2- This corner position was not established during the original government survey.

B. Description of corner evidence found and/or method applies in restoring or re-establishing corner:

7- Established the Southeast corner of the Northeast quarter of the Northeast quarter of section 22 as per B.L. M instructions for the subdivision of a section.

2- Established the Northwest corner of the Northeast quarter of the Northeast quarter of section 22 as per B.L. M. instructions for the subdivision of a section.

C. Description of monument for corner and accessories established to perpetuate locating the position of the corner:

7- Set a 5/8" X 32" rered with P.S. cap #33981
 Wit: 6" W. Pine N08°W 29.41'
 11" R. Pine S88°W 43.00'
 22" W. Pine S37°E 11.80'
 5" W. Pine N39°E 26.64'
 Blue Carsonite Post North 1'±

2- Set a 5/8" X 32" rered with P.S. cap #33981
 Wit: 11" J. Pine S11°E 43.60'
 5" J. Pine S89°E 36.49'
 2 1/4" Pipe S61°E 3.68'
 4" J. Pine N47°E 25.16'
 5" J. Pine N55°W 23.60'
 Centerline of 2- track South 15'±
 Blue Carsonite post South 1'±

Signed by:

Carl T. Kiiskila

Date:

2/22/06

Surveyor's Michigan License No.:

33981

