

**SURVEY & REMONUMENTATION**

MAY 28 1997

COMMISSION

**1996 Newaygo County Remonumentation Project**

NEWAYGO COUNTY  
REGISTER OF DEEDS  
LINDA M. BROWN

**LAND CORNER RECORDATION CERTIFICATE  
FILING REQUIREMENT of Act 74, Mich. P.A. 1970**

'97 FEB 12 PM 4 45

*Linda M. Brown*

For corners in Newaygo (County) Located in: Corner Code #

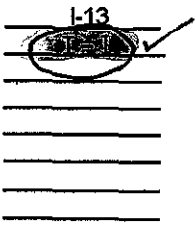
1. Public Land Survey T 16N R 14W  
T 15N R 14W  
T \_\_\_ R \_\_\_  
T \_\_\_ R \_\_\_

2. Property Controlling in Section S \_\_\_ T \_\_\_ R \_\_\_  
S \_\_\_ T \_\_\_ R \_\_\_

3. Miscellaneous Property in Sec. S \_\_\_ T \_\_\_ R \_\_\_  
S \_\_\_ T \_\_\_ R \_\_\_

4. Lot No. \_\_\_\_\_, Recorded Plat \_\_\_\_\_

5. Private Claims \_\_\_\_\_



VOL. 2 PAGE 53

**Register of Deeds Stamp & File Number**

	A	B	C	D	E	F	G	H	I	J	K	L	M
2	0	1	2	3	4	5	6	7	8	9	10	11	12
3													
4	13	14	15	16	17	18	19	20	21	22	23	24	25
5													
6	26	27	28	29	30	31	32	33	34	35	36	37	38
7													
8	39	40	41	42	43	44	45	46	47	48	49	50	51
9													
10	52	53	54	55	56	57	58	59	60	61	62	63	64
11													
12	65	66	67	68	69	70	71	72	73	74	75	76	77
13													

I, Norman L. Ochs, in a field survey on September 3, 1996, do hereby certify that under requirements of P. A. 74, Michigan P.A. of 1970, the corner points mentioned in lines 1 and 2 above were in conformance with regulations and rules therefore as required in the current manual of survey instructions of the United States Department of the Interior, Bureau of Land Management or by a decree of a Court of Law and/or that the corner points mentioned in lines 3, 4 and 5 above were in conformance with the rules of the Michigan Board of Land Surveyors or by a Decree of a Court of Law, established, re-established, monumented, re-monumented, recovered, found as expressed below:

**Note: Not more than 4 corners, all in the same town and range, may be recorded on this certificate.**

Southeast Corner, Section 34, Troy Township, Newaygo County, Michigan  
Northeast Corner, Section 3, Beaver Township, Newaygo County, Michigan

**A. DESCRIPTION OF ORIGINAL MONUMENT AND ACCESSORIES AND/OR SUBSEQUENT RESTORATION:**

G.L.O. Thomas Whelpley Resurvey 1856  
20" Black Ash S10°E 30 Links (19.8') #1  
20" Black Ash S60°W 37 Links (24.42') #2

Robert A. Griffin R.L.S. #13584  
LCRC #573 October 13, 1983  
Recovered its position by proportional measurement and on a straight line between controlling corners (Southwest Corner of Section 33 and South One Quarter Corner of Section 35 on the township line.)  
Set 1/2" X 70" rebar with cap  
8" Cedar S76°E 20.96' #3  
10" Red Maple S21°E 54.47' #4  
5" White Cedar S40°W 43.07' #5  
6" Ash N31°W 61.37' #6  
Fiberglass Post West 4.4' #7

**B. DESCRIPTION OF CORNER EVIDENCE FOUND AND/OR METHOD APPLIED IN RESTORING OR REESTABLISHING CORNER:**

Found 1/2" X 70" rebar with cap #13584 in swamp and the condition of the recorded witnesses are: #1, and #2 gone, #3 thru #7 good condition.

**C. DESCRIPTION OF MONUMENT FOR CORNER AND ACCESSORIES ESTABLISHED TO PERPETUATE LOCATING THE POSITION OF THE CORNER:**

Accepted the 1/2" X 70" rebar with cap #13584 as a substantial marker for the section corner and is accepted as a careful and faithful reestablishment of the original corner.

8" White Cedar S76°E 20.96' #3  
10" Red Maple S21°E 54.47' #4  
5" White Cedar S40°W 43.07' #5  
6" Ash N31°W 61.37' #6  
Fiberglass Post West 2.4' #7

Signed by Norman L. Ochs Date September 13, 1996  
Norman L. Ochs

Surveyor's Michigan License No. 22439

Form approved by Michigan State Board of Land Surveyors, Jan 28, 1971  
Revised May 14, 1975  
Revised Jan., 1983

Approved by Peer Review Group On September 17, 1996  
Norman L. Ochs, County Representative.

*N. L. O.*

