

LAND CORNER RECORDATION CERTIFICATE

Filing Requirement of Act 74, Mich. PA 1970

For Corners In: Ogemaw (County)	Located In	Corner Code #
1. Public Land Survey	T 23N R 2E	G-9
2. Property Controlling in Section	S 28 T 23N R 2E	7
3. Miscellaneous Property in Section	S T R	

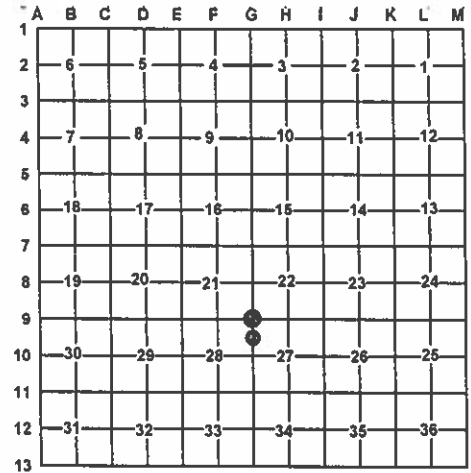
Register of Deeds Stamp & File Number

4. Lot No: Recorded Plat:

5. Private Claims:

I, Carl T. Kiiskila, in a field survey on November 19, 2008 do hereby state that under requirements of PA 74, Michigan PA of 1970, the corner points mentioned in lines 1 and 2 above were in conformance with regulations and rules therefore as required in the current manual of survey instructions of the United States Department of the Interior, Bureau of Land Management or by a decree of a Court of Law and/or that the corner points mentioned in lines 3, 4 and 5 above were in conformance with the rules of the Michigan Board of Land Surveyors or by a Decree of a Court of Law; established, re-established, monumented, recovered, found as expressed below:

NOTE: Not more than 2 corners, all in the same town and range, may be recorded on this certificate.



A. Description of original monument and accessories and/or subsequent restoration:

G-9 GLO -James H. Mullett D.S. 1846
Set post corner 21,22,27&28
Wit: Y. Pine 16 S27°E 2.29 chains

7 N 1/16 Cor. Common to Secs. 27 & 28 T23N, R2E

This corner position was not established during the original Government Survey.

L.C.R.C - L.1, p.275 - Robert L. Higgins P.S.#21570 -
1982 - 1" Pipe

Wits: N50°W 28.32' 36" Red Oak
S45°W 42.17' 4" Red Oak
N75°E 52.92' 24" Red Pine
S25°E 48.40' 10" Red Oak



B. Description of corner evidence found and/or method applies in restoring or re-establishing corner:

G-9 Found 1/2"x18" rod drove in center of rotted 1" square tapered piece of metal 6' North of E-W gravel road. Accepted found rod and metal as the best available evidence of the position of the original corner.

7- Set 5/8"x32" rebar with P.S.cap#33981 per standard BLM procedure.

C. Description of monument for corner and accessories established to perpetuate locating the position of the corner:

G-9 Found 1/2" CIR drove in center of rotted 1" square and tapered piece of metal, replaced with 1"x3' galvanized pipe with P.S. cap#33981 down 0.7' below grade.
Wit: 24" Red Pine N73°E 53.75' (fd. N&T on SE side)
14" Red Oak S45°E 48.77' (fd. N&T on NE side)
24" Red Oak S26°W 48.22' (set N&T on NW side)
11" Red Oak N30°W 46.85' (fd. N&T on NE side)
Set Blue Carsonite Post with Loc. Tag 33' South

7- 5/8"x32" rebar with P.S.cap#33981
Wit: 9" White Pine N4°W 9.34' (set N&T on E side)
15" Oak S75°W 27.86' (set N&T on N side)
10" White Pine S26°E 41.29' (set N&T on SW side)
1" Pipe N50°W 34.61'
5" White Pine S84°E 14.02' (set N&T on S side)
Set Blue Carsonite Post with Loc. Tag 1' North

Signed by: Carl T. Kiiskila
Surveyor's Michigan License No.: 33981

Date: 6-17-09