

SURVEY &
REMONUMENTATION

DEC 01 1998

OTTAWA CO. REMONUMENTATION
LAND CORNER RECORDATION CERTIFICATE
Filing Requirement of Act 74, Mich. P.A. 1970

For corners in SECTION

Ottawa	Located In:	Corner Code #
(County)	Georgetown Township	
1. Public Land Survey	T 6N R 13W	K-2
	T R	W 1/4 Cor.
	T R	Sec. 1
	T R	
	T R	
2. Property Controlling	S T R	
in Section	S T R	
3. Miscellaneous	S T R	
Property in Sec.	S T R	

RECORDED

98 JUL 24 PM 1:46

Harry Schell
REGISTER OF DEEDS
OTTAWA COUNTY, MI

Register of Deeds Stamp & File Number

4. Lot No. _____, Recorded Plat _____
5. Private Claims _____

I, Rodney D. Unema, in a field survey on JUNE 24, 19 98,
do hereby certify that under requirements of P.A. 74, Michigan P.A. of 1970, the corner points mentioned
in lines 1 and 2 above were in conformance with regulations and rules therefore as required in the
current manual of survey instructions of the United States Department of the Interior, Bureau of Land
Management or by a decree of a Court of Law and/or that the corner points mentioned in lines 3, 4 and 5
above were in conformance with the rules of the Michigan Board of Land Surveyors or by a Decree of a
Court of Law; established, re-established, monumented, re-monumented, recovered, found as
expressed below:

**NOTE: Not more than 4 corners, all in the same town and range, may be recorded
on this certificate.**

A. Description of original monument and accessories and/or subsequent restoration:

K-2	
G.L.O. Nov. 1831	No recorded L.C.R.C.'s
Set Hwp @ 40.00 chains	or other information provided
10" Maple S77°E 29 links	
24" Maple N57°W 33 links	

	A	B	C	D	E	F	G	H	I	J	K	L	M
2	6	5	4	3	2	1							
3													
4	7	8	9	10	11	12							
5													
6	18	17	16	15	14	13							
7													
8	19	20	21	22	23	24							
9													
10	30	29	28	27	26	25							
11													
12	31	32	33	34	35	36							
13													

FILED APPROVED 7-20-98
H.D.N.

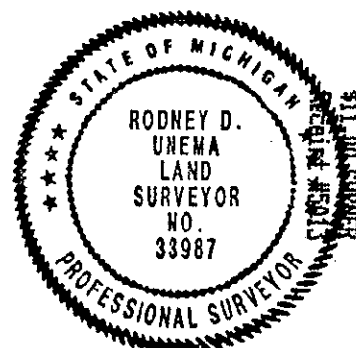
B. Description of corner evidence found and/or method applied in restoring or reestablishing corner:

K-2
No evidence of corner or occupation lines were found during the field survey.
The position of this corner was determined during the course of a survey by
by Exxel Engineering in 1977. The SE corner of Section 2 falls in the
Grand River, so its position was calculated by intersecting the East
line and North line of Section 11. Then the line between the W 1/4 corner
and the center of Section 2 was projected East to intersect the line
between the SE corner and NE corner of Section 2. Set Ottawa Co. cap
on 3/4" X 36" steel bar, and is accepted as a careful and faithful
reestablishment of the position of the original corner.

*See reverse side
for sketch

C. Description of monument for corner and accessories established to perpetuate locating the position of the corner:

K-2 W 1/4 Corner, Section 1
Ottawa Co. Cap on 3/4" X 36" steel bar in tree root
Set nail & O.C. tag in N side 12" Maple East 0.99'
Set nail & O.C. tag in W side 16" Poplar S10°W 13.13'
Set nail & O.C. tag in NE side 14" Poplar N72°W 23.80'
Set nail & O.C. tag in W side 12" Oak N30°W 28.49'
Easterly edge of mowed field for airport S75°W 85'±



Signed by Rodney D. Unema Date June 30, 1998

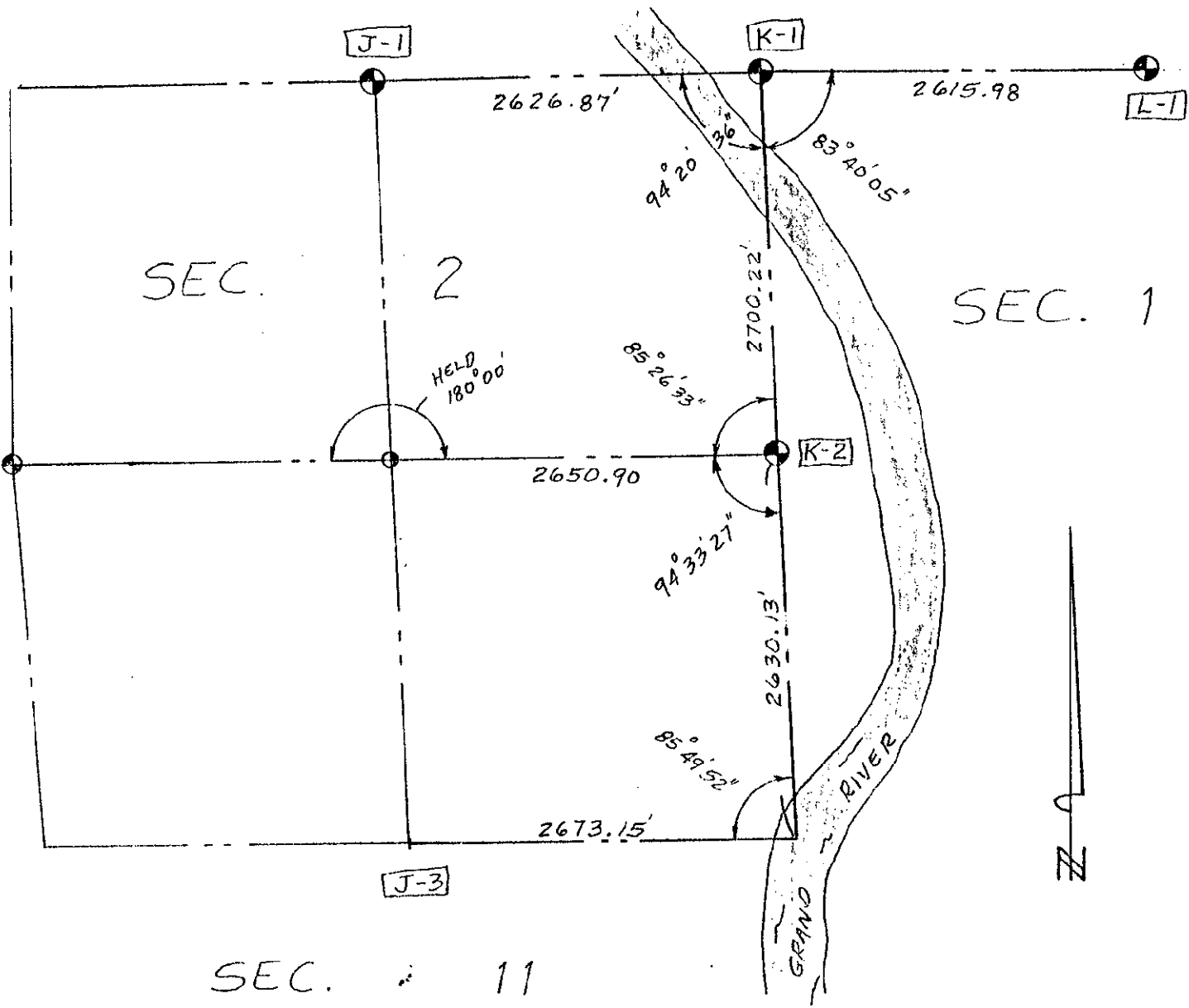
Surveyor's Michigan License No. 33987

FORM APPROVED BY MICHIGAN STATE BOARD OF LAND SURVEYORS, JAN. 28, 1971
REVISED MAY 14, 1975
REVISED JAN., 1983

SURVEY &
REMONUMENTATION

DEC 01 1998

SECTION



NS2327

G. LENGEMANN CO.