

DEC 01 1998

**SECTION**

**OTTAWA COUNTY REMONUMENTATION**

**LAND CORNER RECORDATION CERTIFICATE**  
Filing Requirement of Act 74, Mich. P.A. 1970

For corners in

OTTAWA

(County)

Located In:

Corner Code #

1. Public Land Survey

T\_\_\_ R\_\_\_  
T\_\_\_ R\_\_\_  
T\_\_\_ R\_\_\_  
T\_\_\_ R\_\_\_

M1-2 North witness

Cor for M-2

Robinson Twp.

2. Property Controlling  
in Section

S 1 T 7N R 15W

SEQUENTIAL  
CORNER #2

3. Miscellaneous  
Property in Sec.

S\_\_\_ T\_\_\_ R\_\_\_  
S\_\_\_ T\_\_\_ R\_\_\_

**RECORDED**

98 SEP 29 PM 1:58

*Randy J. Vugteveen*  
REGISTER OF DEEDS  
OTTAWA COUNTY, MI

Register of Deeds Stamp & File Number

4. Lot No. \_\_\_\_\_, Recorded Plat \_\_\_\_\_

5. Private Claims \_\_\_\_\_

I, Randal J. Vugteveen, in a field survey on June 4, 1998 do hereby state that under requirements of P.A. 74, Michigan P.A. of 1970, the corner points mentioned in lines 1 and 2 above were in conformance with regulations and rules therefore as required in the current manual of survey instructions of the United States Department of the Interior, Bureau of Land Management or by a decree of a Court of Law and/or that the corner points mentioned in lines 3, 4 and 5 above were in conformance with the rules of the Michigan Board of Land Surveyors or by a Decree of a Court of Law; established, re-established, monumented, recovered, found as expressed below:

NOTE: Not more than 2 corners, all in the same town and range, may be recorded on this certificate.

A	B	C	D	E	F	G	H	I	J	K	L	M
1												
2	6		5		4		3		2		1	
3												
4	7		8		9		10		11		12	
5												
6	18		17		16		15		14		13	
7												
8	19		20		21		22		23		24	
9												
10	30		29		28		27		26		25	
11												
12	31		32		33		34		35		36	
13												

A. Description of original monument and accessories and/or subsequent restoration:

M-2 GLO, 1837 J. Mullett  
Corner falls in River, over Grand River on ice  
Set Post on Right Bank  
14" Black OAK N43°E 11 Links  
8" Ironwood N7°W 32 Links

B. Description of corner evidence found and/or method applied in restoring or reestablishing corner:

Held line extended South of "L" iron found at the centerline at Oriole Drive and Cast Iron Monument found at the NE corner of section 1, said "L" Referenced to Milanoski and Englert Surveys dated May 29, 1979 and May 24, 1979

This position not established by original government surveyors. This monument is accepted as the best available evidence of the position of the East line of the NE 1/4 of Section 1, T7N, R15W

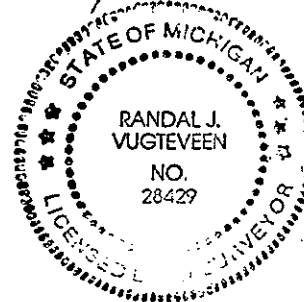
C. Description of monument for corner and accessories established to perpetuate locating the position of the corner:

M-2 Reference Monument on North Side of Grand River on the East line of Section 1

Set 3/4" X 36" Bar with Remon Cap on top of bank  
Set Nail & Remon tag in East side 16" OAK Az 209° 17.47'  
Set Nail & Remon tag in South side 26" OAK Az 294° 86.62'  
Set Nail & Remon tag in Southeast side 34" OAK Az 62° 40.51'  
Southeast corner House Foundation Az 345° 46.01'  
Old Fence line at the top of Bank +/- Az 200° 10.0'  
North edge of Grand River Az 180° 146.0'

Signed by *Randal J. Vugteveen*  
Surveyor's Michigan License No. 28429

Date SEPT. 24, 1998

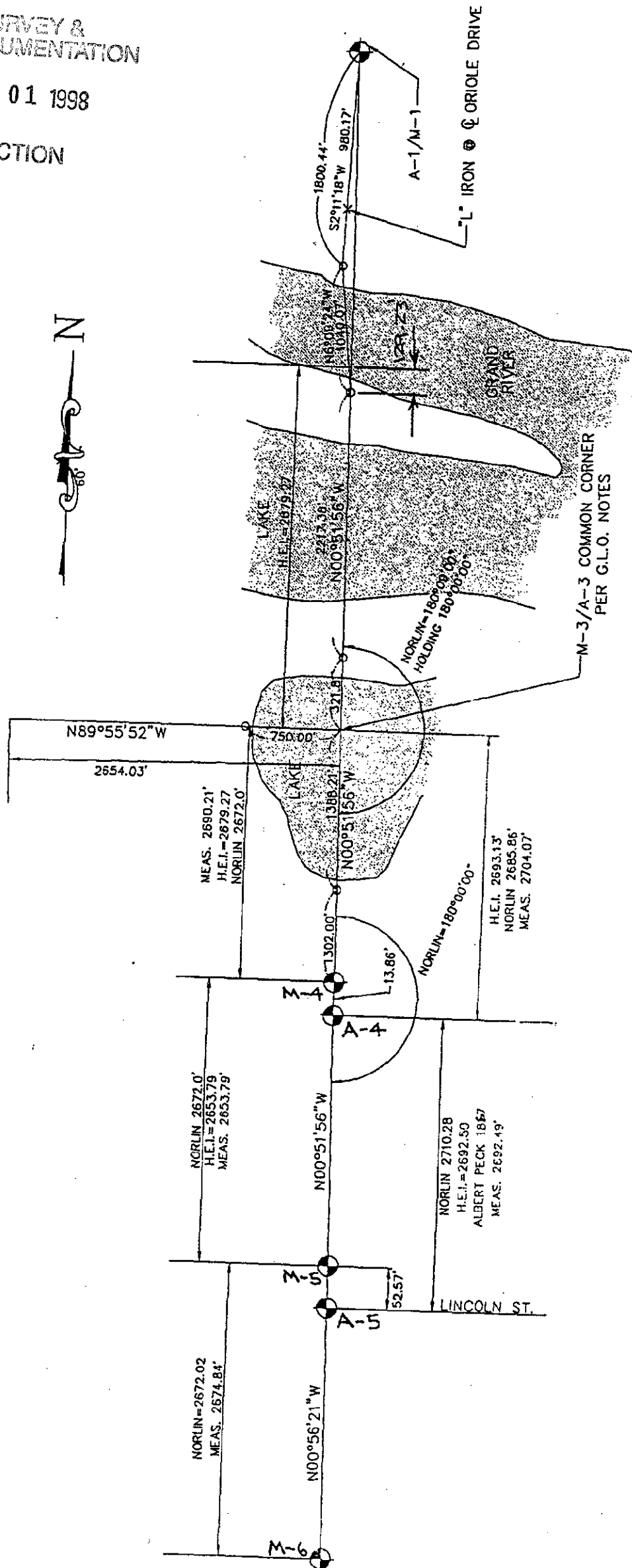


411.00 CORNER  
Receipt #17502

# SURVEY & REMONUMENTATION

DEC 01 1998

SECTION



M-5 TO M-1  
TOTAL = S0° 51'56\"E 10716.70'  
H.E.I. = 10,717.05'

NOR-LIN. INFORMATION FROM FIELD BOOK  
#361 OTTAWA COUNTY SURVEYOR'S RECORDS  
THEO. NOR. LIN. MAY 1920